



Date: 04/16/12

Current Geography Selection: (1 Selected) Counties: Rensselaer County

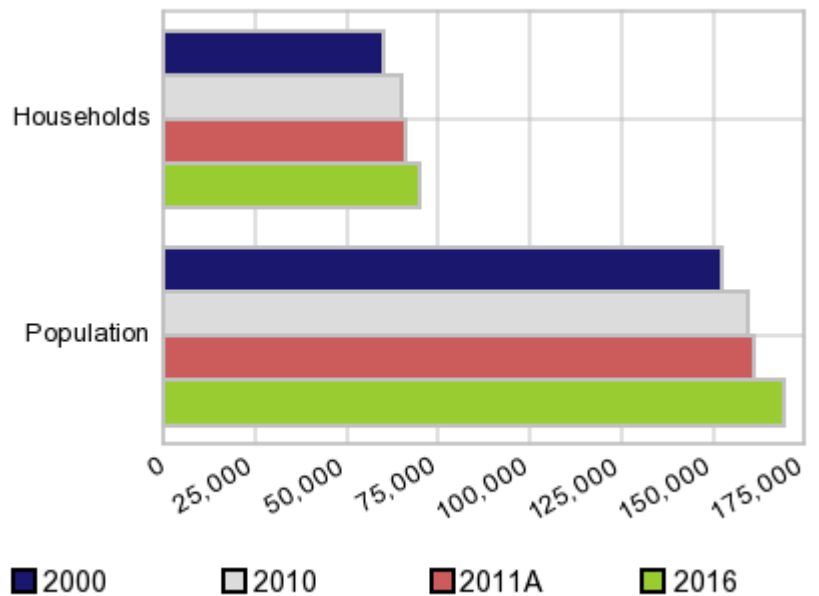
## Executive Summary Report with Charts

### Population Demographics:

The number of households in the study area in 2000 was **59,894** and changed to **64,702** in 2010, representing a change of **8.0%**. The household count in 2011A was **65,749** and the household projection for 2016 is **69,931**, a change of **6.4%**.

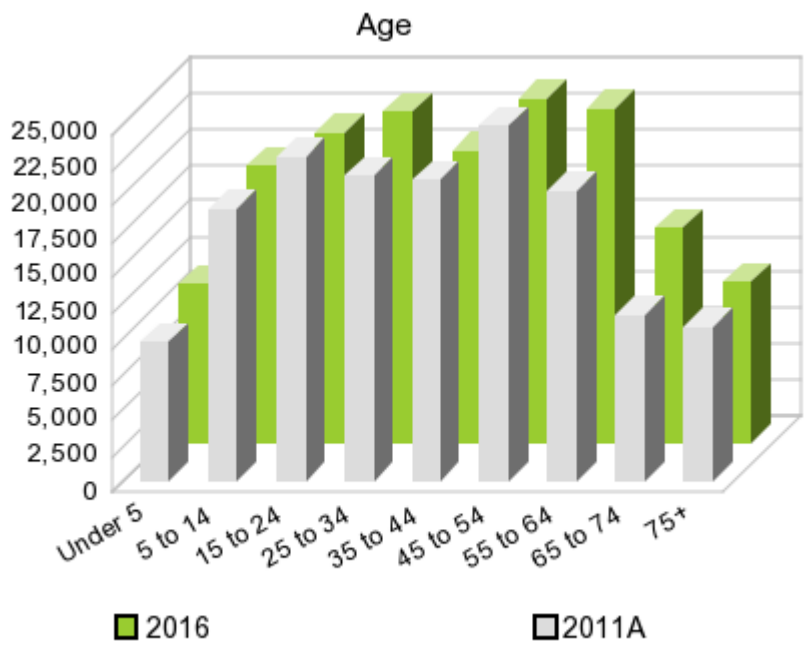
The population in the study area in 2000 was **152,538** and in 2010 it was **159,429**, roughly a **4.5%** change. The population in 2011A was **161,416** and the projection for 2016 is **169,298** representing a change of **4.9%**.

Population and Household Change



|                  | 2000<br>Census | 2010<br>Census | 2011A<br>Estimate | 2016<br>Projection | Percent Change  |                 |
|------------------|----------------|----------------|-------------------|--------------------|-----------------|-----------------|
|                  |                |                |                   |                    | 2000 to<br>2010 | 2011 to<br>2016 |
| Total Population | 152,538        | 159,429        | 161,416           | 169,298            | 4.5%            | 4.9%            |
| Total Households | 59,894         | 64,702         | 65,749            | 69,931             | 12.3%           | 6.4%            |

### Population by Age



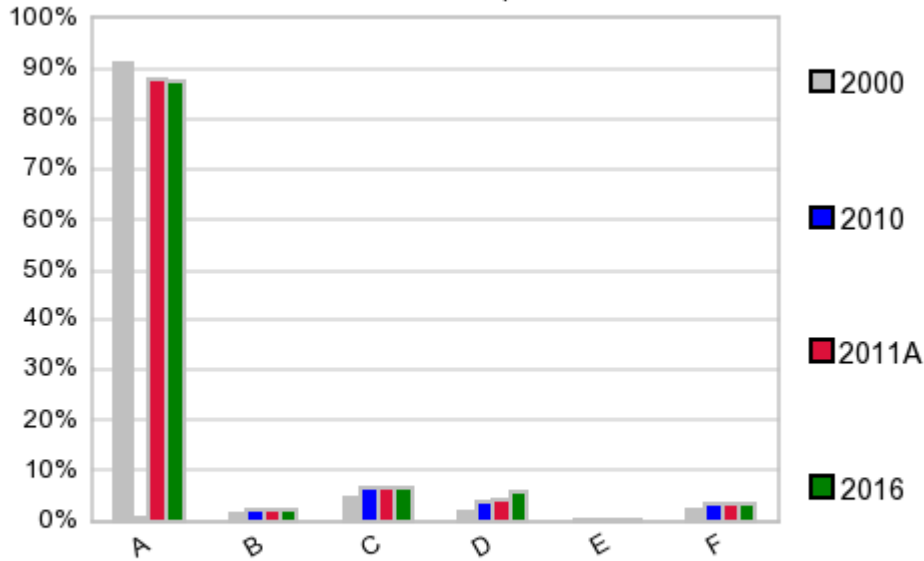
In 1990, the median age of the total population in the study area was **33**, and in 2000, it was **37**. The median age in 2011A is **39** and it is predicted to change in five years to **40** years. In 2011A, females represented **50.7%** of the population with a median age of **41** and males represented **49.3%** of the population with a median age of **37** years. In 2011A, the most prominent age group in this geography is **Age 45 to 54** years. The age group least represented in this geography is **0 to 4** years.

**Age Groups\***

|          | 1990 Census |       | 2000 Census |       | 2011A Estimate |       | 2016 Projection |       | Percent Change |              |
|----------|-------------|-------|-------------|-------|----------------|-------|-----------------|-------|----------------|--------------|
|          |             | %     |             | %     |                | %     |                 | %     | 1990 to 2000   | 2011 to 2016 |
| 0 to 4   | 10,841      | 7.0%  | 9,272       | 6.1%  | 9,669          | 6.0%  | 11,129          | 6.6%  | -14.5%         | 15.1%        |
| 5 to 14  | 20,147      | 13.0% | 21,380      | 14.0% | 19,094         | 11.8% | 19,291          | 11.4% | 6.1%           | 1.0%         |
| 15 to 19 | 12,087      | 7.8%  | 11,611      | 7.6%  | 11,258         | 7.0%  | 10,187          | 6.0%  | -3.9%          | -9.5%        |
| 20 to 24 | 13,836      | 9.0%  | 10,157      | 6.7%  | 11,393         | 7.1%  | 11,478          | 6.8%  | -26.6%         | 0.7%         |
| 25 to 34 | 25,998      | 16.8% | 19,709      | 12.9% | 21,338         | 13.2% | 23,099          | 13.6% | -24.2%         | 8.3%         |
| 35 to 44 | 22,863      | 14.8% | 24,707      | 16.2% | 21,113         | 13.1% | 20,453          | 12.1% | 8.1%           | -3.1%        |
| 45 to 54 | 14,910      | 9.7%  | 21,656      | 14.2% | 24,828         | 15.4% | 24,034          | 14.2% | 45.2%          | -3.2%        |
| 55 to 64 | 13,341      | 8.6%  | 13,364      | 8.8%  | 20,289         | 12.6% | 23,387          | 13.8% | 0.2%           | 15.3%        |
| 65 to 74 | 11,545      | 7.5%  | 10,585      | 6.9%  | 11,653         | 7.2%  | 15,062          | 8.9%  | -8.3%          | 29.3%        |
| 75 +     | 8,869       | 5.7%  | 10,097      | 6.6%  | 10,783         | 6.7%  | 11,169          | 6.6%  | 13.8%          | 3.6%         |

**Population by Race/Ethnicity**

## Race and Ethnicity Percent Composition



In 2011A, the predominant race/ethnicity category in this study area is **White**. The race & ethnicity category least represented in this geography is **American Indian, Alaska Native**.

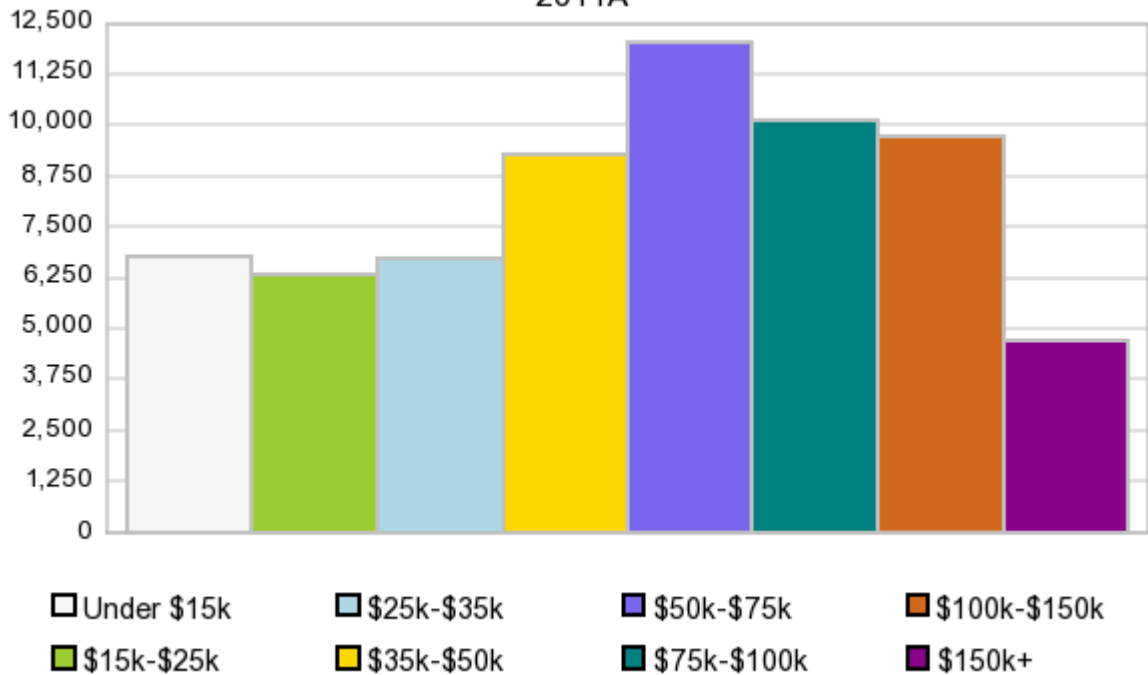
A: White  
 B: Asian Pac Islr  
 C: Black  
 D: Hispanic  
 E: Amer Indian or Alaska Native  
 F: Other or Multi Race

| Race & Ethnicity                 | 2000    |       | 2010    |       | 2011A    |       | 2016       |       | Percent Change |              |
|----------------------------------|---------|-------|---------|-------|----------|-------|------------|-------|----------------|--------------|
|                                  | Census  | %     | Census  | %     | Estimate | %     | Projection | %     | 2000 to 2010   | 2011 to 2016 |
| White                            | 139,002 | 91.1% | 139,529 | 87.5% | 141,169  | 87.5% | 147,650    | 87.2% | 0.4%           | 4.6%         |
| Black                            | 7,147   | 4.7%  | 10,338  | 6.5%  | 10,510   | 6.5%  | 11,200     | 6.6%  | 44.6%          | 6.6%         |
| American Indian or Alaska Native | 347     | 0.2%  | 385     | 0.2%  | 391      | 0.2%  | 414        | 0.2%  | 11.0%          | 5.9%         |
| Asian/Hawaiian/PI                | 2,637   | 1.7%  | 3,551   | 2.2%  | 3,623    | 2.2%  | 3,917      | 2.3%  | 34.7%          | 8.1%         |
| Some Other Race                  | 1,360   | 0.9%  | 1,783   | 1.1%  | 2,205    | 1.4%  | 2,356      | 1.4%  | 31.1%          | 6.8%         |
| Two or More Races                | 2,045   | 1.3%  | 3,843   | 2.4%  | 3,522    | 2.2%  | 3,768      | 2.2%  | 87.9%          | 7.0%         |
| Hispanic Ethnicity               | 3,225   | 2.1%  | 6,080   | 3.8%  | 6,846    | 4.2%  | 9,914      | 5.9%  | 88.5%          | 44.8%        |
| Not Hispanic or Latino           | 149,313 | 97.9% | 153,349 | 96.2% | 154,570  | 95.8% | 159,388    | 94.2% | 2.7%           | 3.1%         |

### Households by Income

## Households by Income Group 2011A

In 2011A the predominant household income category in this study area is **\$50K - \$75K**, and the income group that is least represented in this geography is **\$150K +**.



### HH Income Categories\*

|                       | 1990 Census |       | 2000 Census |       | 2011A Estimate |       | 2016 Projection |       | Percent Change |              |
|-----------------------|-------------|-------|-------------|-------|----------------|-------|-----------------|-------|----------------|--------------|
|                       |             | %     |             | %     |                | %     |                 | %     | 1990 to 2000   | 2011 to 2016 |
| \$0 - \$15,000        | 12,021      | 20.9% | 8,857       | 14.8% | 6,779          | 10.3% | 6,282           | 9.0%  | -26.3%         | -7.3%        |
| \$15,000 - \$24,999   | 10,032      | 17.4% | 7,708       | 12.9% | 6,358          | 9.7%  | 6,040           | 8.6%  | -23.2%         | -5.0%        |
| \$25,000 - \$34,999   | 9,343       | 16.2% | 7,718       | 12.9% | 6,740          | 10.3% | 6,556           | 9.4%  | -17.4%         | -2.7%        |
| \$35,000 - \$49,999   | 11,753      | 20.4% | 10,041      | 16.8% | 9,302          | 14.1% | 9,194           | 13.1% | -14.6%         | -1.2%        |
| \$50,000 - \$74,999   | 9,889       | 17.2% | 13,068      | 21.8% | 12,026         | 18.3% | 11,654          | 16.7% | 32.1%          | -3.1%        |
| \$75,000 - \$99,999   | 2,931       | 5.1%  | 6,510       | 10.9% | 10,101         | 15.4% | 11,873          | 17.0% | 122.1%         | 17.5%        |
| \$100,000 - \$149,999 | 1,313       | 2.3%  | 4,410       | 7.4%  | 9,722          | 14.8% | 12,247          | 17.5% | 235.9%         | 26.0%        |
| \$150,000 +           | 306         | 0.5%  | 1,582       | 2.6%  | 4,719          | 7.2%  | 6,081           | 8.7%  | 417.0%         | 28.9%        |
| Average Hhld Income   | \$37,147    |       | \$52,776    |       | \$70,226       |       | \$79,474        |       | 42.1%          | 13.2%        |
| Median Hhld Income    | \$32,007    |       | \$43,218    |       | \$56,721       |       | \$62,114        |       | 35.0%          | 9.5%         |
| Per Capita Income     | \$14,018    |       | \$20,722    |       | \$30,047       |       | \$34,426        |       | 47.8%          | 14.6%        |

\*This Census 2010 data has not yet been released

Current year data is for the year **2011**, 5 year projected data is for the year **2016**. More About Our Data.  
Demographic data ' 2011 by Experian/Applied Geographic Solutions.

Business List data ' 2011 by D&B<sup>fi</sup>. All rights reserved. All D&B information is powered by DUNSRight™, D&B's Quality Process.

**' 2011. DDR is brought to you by Alteryx, Inc.**

Alteryx, DemographicsNow.com and the Alteryx and DemographicsNow.com logos are trademarks of Alteryx, Inc. All rights reserved.

Privacy Statement | License Agreement