



Date: 04/16/12

Current Geography Selection: (1 Selected) Counties: Schenectady County

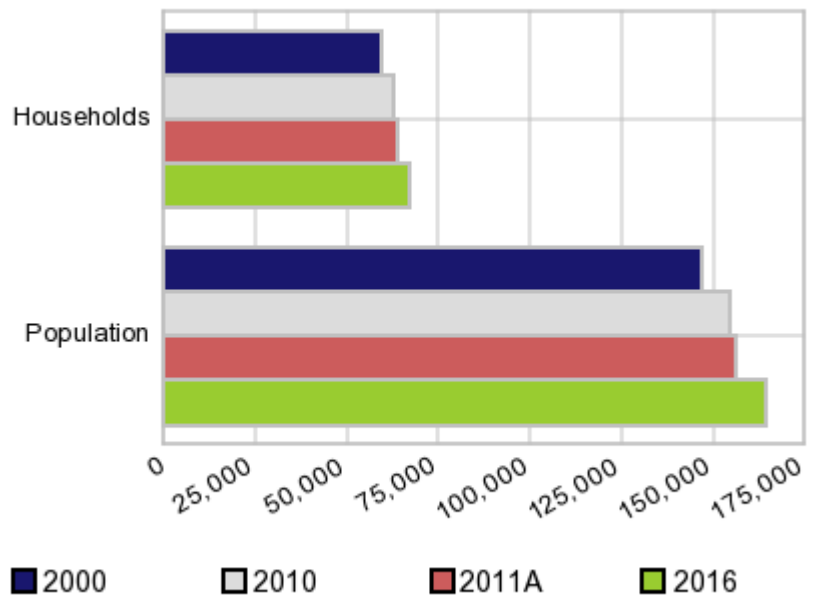
Executive Summary Report with Charts

Population Demographics:

The number of households in the study area in 2000 was **59,684** and changed to **62,886** in 2010, representing a change of **5.4%**. The household count in 2011A was **63,665** and the household projection for 2016 is **66,854**, a change of **5.0%**.

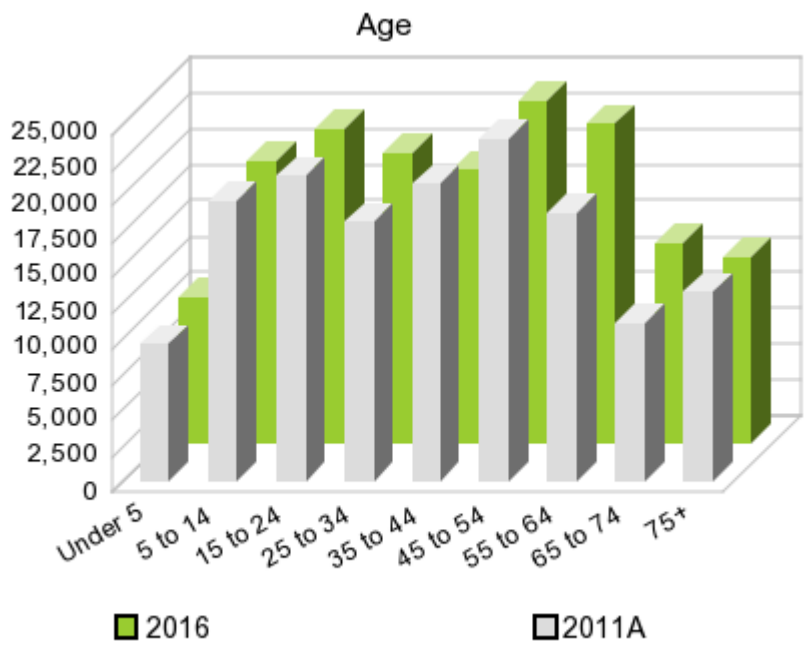
The population in the study area in 2000 was **146,555** and in 2010 it was **154,727**, roughly a **5.6%** change. The population in 2011A was **156,577** and the projection for 2016 is **164,124** representing a change of **4.8%**.

Population and Household Change



	2000 Census	2010 Census	2011A Estimate	2016 Projection	Percent Change	
					2000 to 2010	2011 to 2016
Total Population	146,555	154,727	156,577	164,124	5.6%	4.8%
Total Households	59,684	62,886	63,665	66,854	6.3%	5.0%

Population by Age



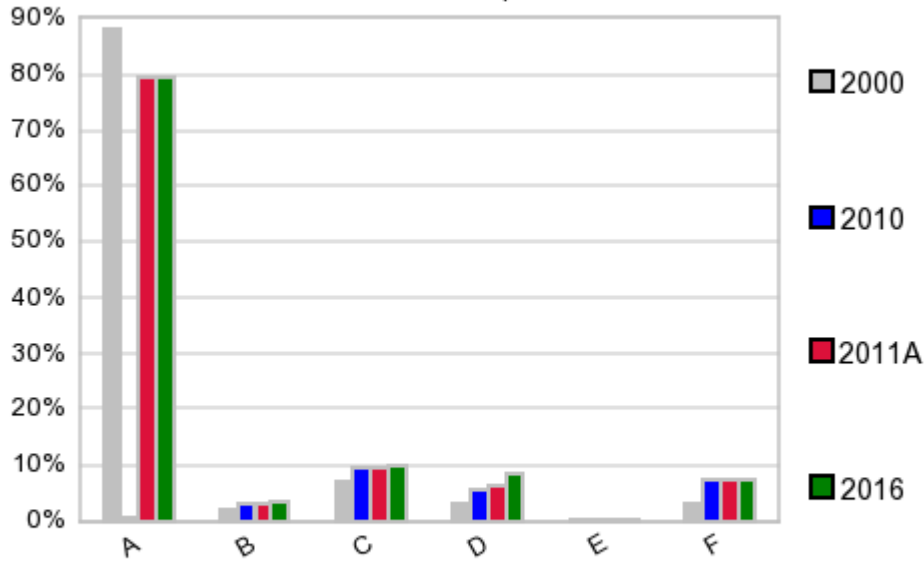
In 1990, the median age of the total population in the study area was **36**, and in 2000, it was **39**. The median age in 2011A is **40** and it is predicted to change in five years to **41** years. In 2011A, females represented **51.3%** of the population with a median age of **42** and males represented **48.7%** of the population with a median age of **38** years. In 2011A, the most prominent age group in this geography is **Age 45 to 54** years. The age group least represented in this geography is **0 to 4** years.

Age Groups*

	1990 Census		2000 Census		2011A Estimate		2016 Projection		Percent Change	
		%		%		%		%	1990 to 2000	2011 to 2016
0 to 4	10,440	7.0%	9,001	6.1%	9,632	6.2%	10,131	6.2%	-13.8%	5.2%
5 to 14	18,421	12.3%	20,816	14.2%	19,565	12.5%	19,691	12.0%	13.0%	0.6%
15 to 19	9,413	6.3%	9,422	6.4%	11,018	7.0%	10,496	6.4%	0.1%	-4.7%
20 to 24	10,675	7.2%	8,003	5.5%	10,335	6.6%	11,378	6.9%	-25.0%	10.1%
25 to 34	24,357	16.3%	17,695	12.1%	18,063	11.5%	20,222	12.3%	-27.4%	12.0%
35 to 44	22,148	14.8%	23,524	16.1%	20,787	13.3%	19,049	11.6%	6.2%	-8.4%
45 to 54	14,823	9.9%	20,606	14.1%	23,918	15.3%	23,921	14.6%	39.0%	0.0%
55 to 64	14,305	9.6%	13,090	8.9%	18,838	12.0%	22,252	13.6%	-8.5%	18.1%
65 to 74	13,738	9.2%	11,376	7.8%	11,113	7.1%	13,935	8.5%	-17.2%	25.4%
75 +	10,975	7.4%	13,022	8.9%	13,278	8.5%	13,018	7.9%	18.7%	-2.0%

Population by Race/Ethnicity

Race and Ethnicity Percent Composition



In 2011A, the predominant race/ethnicity category in this study area is **White**. The race & ethnicity category least represented in this geography is **American Indian, Alaska Native**.

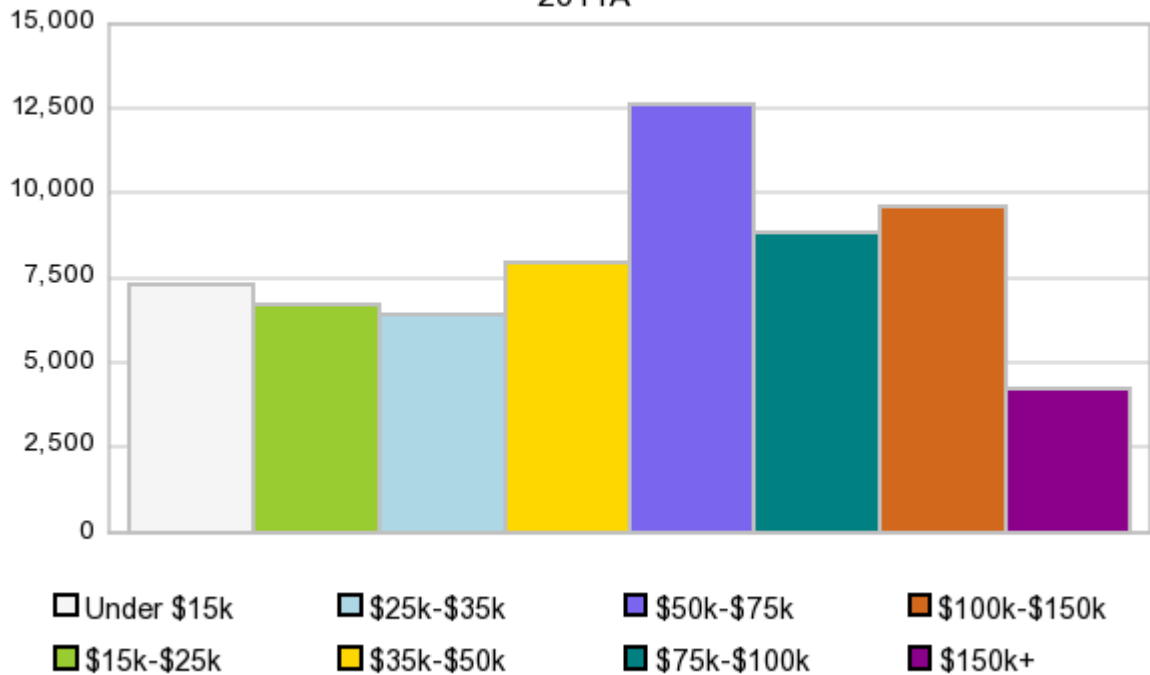
A: White
 B: Asian Pac Islr
 C: Black
 D: Hispanic
 E: Amer Indian or Alaska Native
 F: Other or Multi Race

Race & Ethnicity	2000 Census		2010 Census		2011A Estimate		2016 Projection		Percent Change	
		%		%		%		%	2000 to 2010	2011 to 2016
White	128,631	87.8%	123,211	79.6%	124,561	79.6%	130,103	79.3%	-4.2%	4.5%
Black	9,953	6.8%	14,710	9.5%	14,933	9.5%	15,830	9.7%	47.8%	6.0%
American Indian or Alaska Native	341	0.2%	575	0.4%	582	0.4%	613	0.4%	68.6%	5.3%
Asian/Hawaiian/PI	2,931	2.0%	5,065	3.3%	5,158	3.3%	5,535	3.4%	72.8%	7.3%
Some Other Race	1,769	1.2%	5,364	3.5%	4,384	2.8%	4,636	2.8%	203.2%	5.7%
Two or More Races	2,930	2.0%	5,802	3.8%	6,956	4.4%	7,403	4.5%	98.0%	6.4%
Hispanic Ethnicity	4,639	3.2%	8,827	5.7%	9,804	6.3%	13,712	8.4%	90.3%	39.9%
Not Hispanic or Latino	141,916	96.8%	145,900	94.3%	146,773	93.7%	150,411	91.6%	2.8%	2.5%

Households by Income

Households by Income Group 2011A

In 2011A the predominant household income category in this study area is **\$50K - \$75K**, and the income group that is least represented in this geography is **\$150K +**.



HH Income Categories*

HH Income Categories*	1990 Census		2000 Census		2011A Estimate		2016 Projection		Percent Change	
	Count	%	Count	%	Count	%	Count	%	1990 to 2000	2011 to 2016
\$0 - \$15,000	12,450	21.0%	9,446	15.8%	7,291	11.5%	6,730	10.1%	-24.1%	-7.7%
\$15,000 - \$24,999	10,606	17.9%	7,840	13.1%	6,682	10.5%	6,439	9.6%	-26.1%	-3.6%
\$25,000 - \$34,999	9,792	16.5%	7,670	12.9%	6,425	10.1%	6,131	9.2%	-21.7%	-4.6%
\$35,000 - \$49,999	11,417	19.3%	9,670	16.2%	7,979	12.5%	7,552	11.3%	-15.3%	-5.4%
\$50,000 - \$74,999	9,555	16.1%	12,296	20.6%	12,592	19.8%	12,876	19.3%	28.7%	2.3%
\$75,000 - \$99,999	3,215	5.4%	6,486	10.9%	8,840	13.9%	10,052	15.0%	101.7%	13.7%
\$100,000 - \$149,999	1,453	2.5%	4,447	7.5%	9,592	15.1%	11,870	17.8%	206.1%	23.7%
\$150,000 +	661	1.1%	1,829	3.1%	4,259	6.7%	5,206	7.8%	176.7%	22.2%
Average Hhld Income	\$38,325		\$53,148		\$72,593		\$80,771		38.7%	11.3%
Median Hhld Income	\$31,539		\$41,802		\$56,463		\$61,716		32.5%	9.3%
Per Capita Income	\$15,310		\$21,644		\$30,693		\$34,206		41.4%	11.4%

*This Census 2010 data has not yet been released

Current year data is for the year **2011**, 5 year projected data is for the year **2016**. More About Our Data.
Demographic data ' 2011 by Experian/Applied Geographic Solutions.

Business List data ' 2011 by D&B^{fi}. All rights reserved. All D&B information is powered by DUNSRight™, D&B's Quality Process.

' 2011. DDR is brought to you by Alteryx, Inc.

Alteryx, DemographicsNow.com and the Alteryx and DemographicsNow.com logos are trademarks of Alteryx, Inc. All rights reserved.

Privacy Statement | License Agreement