



Date: 05/03/12

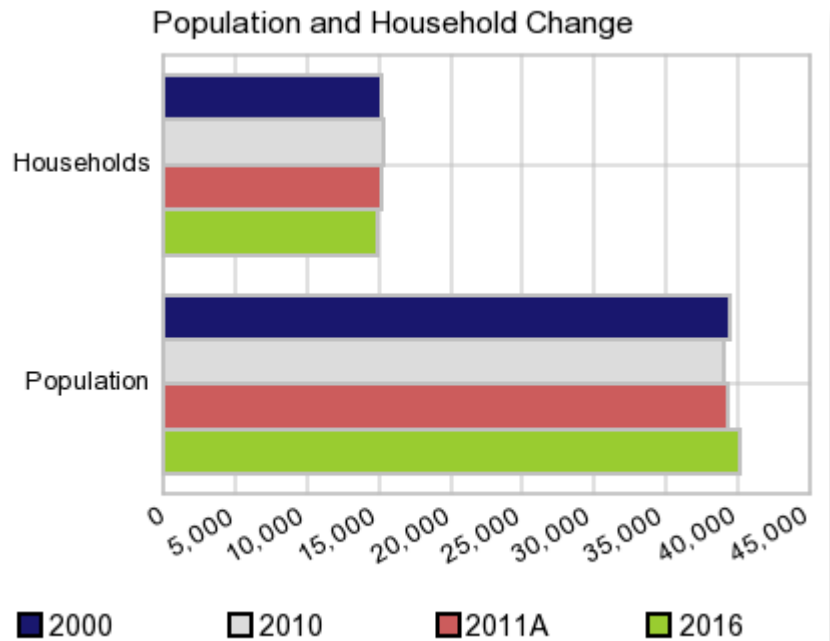
Current Geography Selection: (1 Selected) Counties: Defiance County

Executive Summary Report with Charts

Population Demographics:

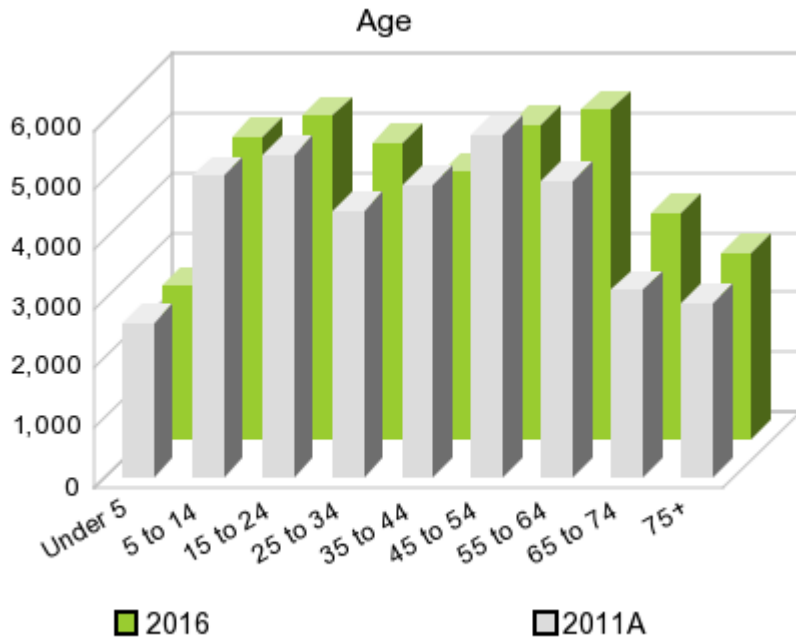
The number of households in the study area in 2000 was **15,138** and changed to **15,268** in 2010, representing a change of **0.9%**. The household count in 2011A was **15,200** and the household projection for 2016 is **14,930**, a change of **-1.8%**.

The population in the study area in 2000 was **39,500** and in 2010 it was **39,037**, roughly a **-1.2%** change. The population in 2011A was **39,268** and the projection for 2016 is **40,158** representing a change of **2.3%**.



| | 2000 Census | 2010 Census | 2011A Estimate | 2016 Projection | Percent Change | |
|------------------|----------------|----------------|-------------------|--------------------|-----------------|-----------------|
| | | | | | 2000 to 2010 | 2011 to 2016 |
| Total Population | 39,500 | 39,037 | 39,268 | 40,158 | -1.2% | 2.3% |
| Total Households | 15,138 | 15,268 | 15,200 | 14,930 | 8.5% | -1.8% |

Population by Age



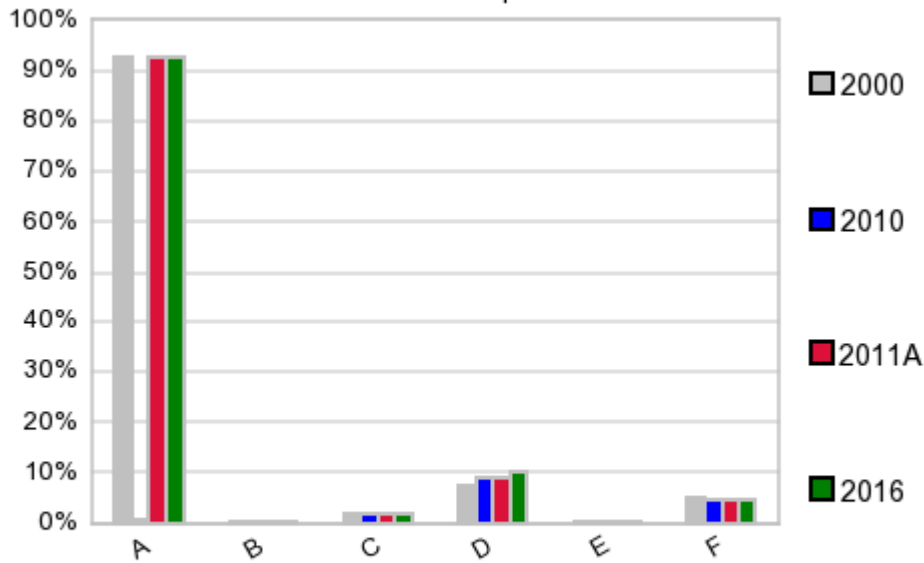
In 1990, the median age of the total population in the study area was **33**, and in 2000, it was **37**. The median age in 2011A is **39** and it is predicted to change in five years to **40** years. In 2011A, females represented **50.7%** of the population with a median age of **40** and males represented **49.3%** of the population with a median age of **38** years. In 2011A, the most prominent age group in this geography is **Age 45 to 54** years. The age group least represented in this geography is **0 to 4** years.

Age Groups*

| | 1990 Census | | 2000 Census | | 2011A Estimate | | 2016 Projection | | Percent Change | |
|----------|-------------|-------|-------------|-------|----------------|-------|-----------------|-------|----------------|--------------|
| | | % | | % | | % | | % | 1990 to 2000 | 2011 to 2016 |
| 0 to 4 | 2,877 | 7.3% | 2,747 | 7.0% | 2,602 | 6.6% | 2,575 | 6.4% | -4.5% | -1.0% |
| 5 to 14 | 6,447 | 16.4% | 5,769 | 14.6% | 5,058 | 12.9% | 5,049 | 12.6% | -10.5% | -0.2% |
| 15 to 19 | 3,178 | 8.1% | 3,184 | 8.1% | 2,809 | 7.2% | 2,606 | 6.5% | 0.2% | -7.2% |
| 20 to 24 | 2,693 | 6.8% | 2,436 | 6.2% | 2,607 | 6.6% | 2,816 | 7.0% | -9.5% | 8.0% |
| 25 to 34 | 6,024 | 15.3% | 4,814 | 12.2% | 4,480 | 11.4% | 4,947 | 12.3% | -20.1% | 10.4% |
| 35 to 44 | 5,977 | 15.2% | 5,992 | 15.2% | 4,903 | 12.5% | 4,475 | 11.1% | 0.3% | -8.7% |
| 45 to 54 | 4,269 | 10.8% | 5,757 | 14.6% | 5,755 | 14.7% | 5,270 | 13.1% | 34.9% | -8.4% |
| 55 to 64 | 3,282 | 8.3% | 3,703 | 9.4% | 4,978 | 12.7% | 5,514 | 13.7% | 12.8% | 10.8% |
| 65 to 74 | 2,693 | 6.8% | 2,698 | 6.8% | 3,135 | 8.0% | 3,788 | 9.4% | 0.2% | 20.8% |
| 75 + | 1,910 | 4.9% | 2,400 | 6.1% | 2,935 | 7.5% | 3,104 | 7.7% | 25.7% | 5.8% |

Population by Race/Ethnicity

Race and Ethnicity Percent Composition



In 2011A, the predominant race/ethnicity category in this study area is **White**. The race & ethnicity category least represented in this geography is **American Indian, Alaska Native**.

A: White
 B: Asian Pac Islr
 C: Black
 D: Hispanic
 E: Amer Indian or Alaska Native
 F: Other or Multi Race

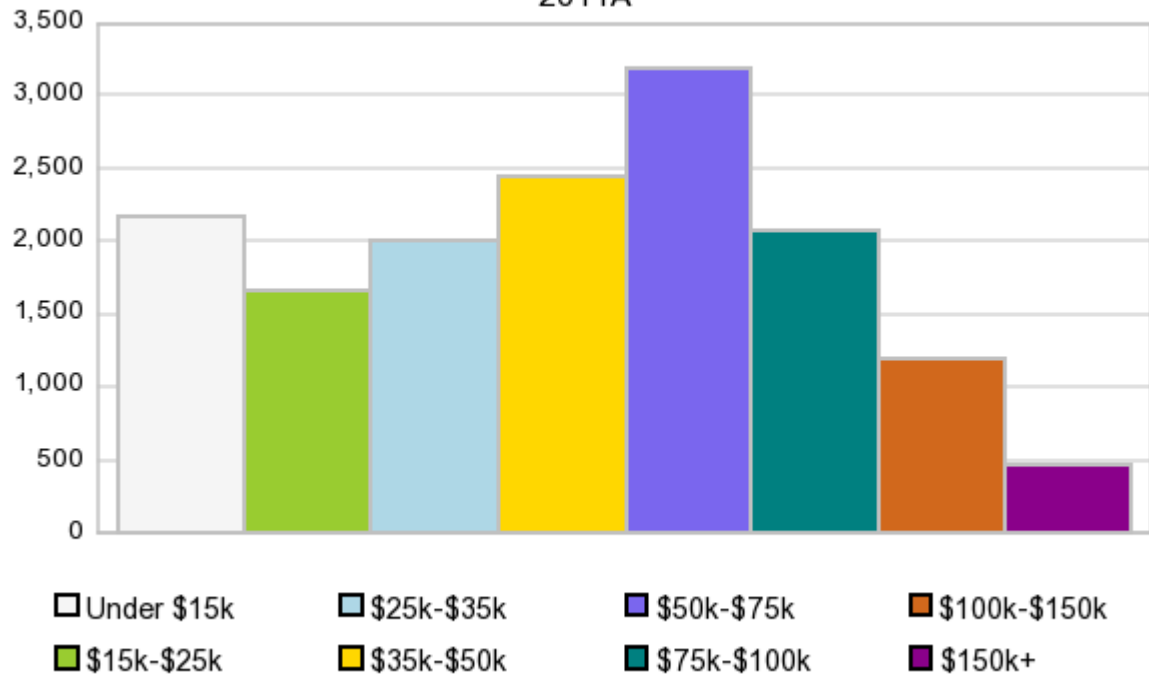
Race & Ethnicity

| | 2000 | | 2010 | | 2011A | | 2016 | | Percent Change | |
|----------------------------------|--------|-------|--------|-------|----------|-------|------------|-------|----------------|--------------|
| | Census | % | Census | % | Estimate | % | Projection | % | 2000 to 2010 | 2011 to 2016 |
| White | 36,575 | 92.6% | 36,208 | 92.8% | 36,414 | 92.7% | 37,208 | 92.7% | -1.0% | 2.2% |
| Black | 692 | 1.8% | 725 | 1.9% | 736 | 1.9% | 777 | 1.9% | 4.8% | 5.6% |
| American Indian or Alaska Native | 102 | 0.3% | 98 | 0.3% | 98 | 0.3% | 100 | 0.3% | -3.9% | 2.0% |
| Asian/Hawaiian/PI | 151 | 0.4% | 131 | 0.3% | 132 | 0.3% | 136 | 0.3% | -13.2% | 3.0% |
| Some Other Race | 1,417 | 3.6% | 1,105 | 2.8% | 1,299 | 3.3% | 1,328 | 3.3% | -22.0% | 2.2% |
| Two or More Races | 563 | 1.4% | 770 | 2.0% | 589 | 1.5% | 609 | 1.5% | 36.8% | 3.4% |
| Hispanic Ethnicity | 2,857 | 7.2% | 3,409 | 8.7% | 3,527 | 9.0% | 4,000 | 10.0% | 19.3% | 13.4% |
| Not Hispanic or Latino | 36,643 | 92.8% | 35,628 | 91.3% | 35,741 | 91.0% | 36,158 | 90.0% | -2.8% | 1.2% |

Households by Income

Households by Income Group 2011A

In 2011A the predominant household income category in this study area is **\$50K - \$75K**, and the income group that is least represented in this geography is **\$150K +**.



HH Income Categories*

| | 1990 Census | | 2000 Census | | 2011A Estimate | | 2016 Projection | | Percent Change | |
|-----------------------|-------------|-------|-------------|-------|----------------|-------|-----------------|-------|----------------|--------------|
| | Count | % | Count | % | Count | % | Count | % | 1990 to 2000 | 2000 to 2011 |
| \$0 - \$15,000 | 2,785 | 19.8% | 1,716 | 11.3% | 2,182 | 14.4% | 2,315 | 15.5% | -38.4% | 6.1% |
| \$15,000 - \$24,999 | 2,669 | 19.0% | 1,787 | 11.8% | 1,650 | 10.9% | 1,535 | 10.3% | -33.0% | -7.0% |
| \$25,000 - \$34,999 | 2,452 | 17.4% | 1,979 | 13.1% | 2,004 | 13.2% | 1,976 | 13.2% | -19.3% | -1.4% |
| \$35,000 - \$49,999 | 3,211 | 22.8% | 3,132 | 20.7% | 2,443 | 16.1% | 2,161 | 14.5% | -2.5% | -11.5% |
| \$50,000 - \$74,999 | 2,252 | 16.0% | 3,713 | 24.5% | 3,195 | 21.0% | 2,933 | 19.6% | 64.9% | -8.2% |
| \$75,000 - \$99,999 | 450 | 3.2% | 1,774 | 11.7% | 2,070 | 13.6% | 2,148 | 14.4% | 294.2% | 3.8% |
| \$100,000 - \$149,999 | 186 | 1.3% | 810 | 5.4% | 1,185 | 7.8% | 1,322 | 8.9% | 335.5% | 11.6% |
| \$150,000 + | 43 | 0.3% | 227 | 1.5% | 471 | 3.1% | 540 | 3.6% | 427.9% | 14.7% |
| Average Hhld Income | \$34,465 | | \$51,027 | | \$54,372 | | \$54,736 | | 48.1% | 0.7% |
| Median Hhld Income | \$31,527 | | \$44,968 | | \$44,697 | | \$44,694 | | 42.6% | -0.0% |
| Per Capita Income | \$12,398 | | \$19,556 | | \$21,477 | | \$20,816 | | 57.7% | -3.1% |

*This Census 2010 data has not yet been released

Current year data is for the year **2011**, 5 year projected data is for the year **2016**. More About Our Data.
Demographic data © 2011 by Experian/Applied Geographic Solutions.

Business List data © 2011 by D&B®. All rights reserved. All D&B information is powered by DUNSRight™, D&B's Quality Process.

Alteryx, DemographicsNow.com and the Alteryx and DemographicsNow.com logos are trademarks of Alteryx, Inc.
All rights reserved.

Privacy Statement | License Agreement