



Date: 05/03/12

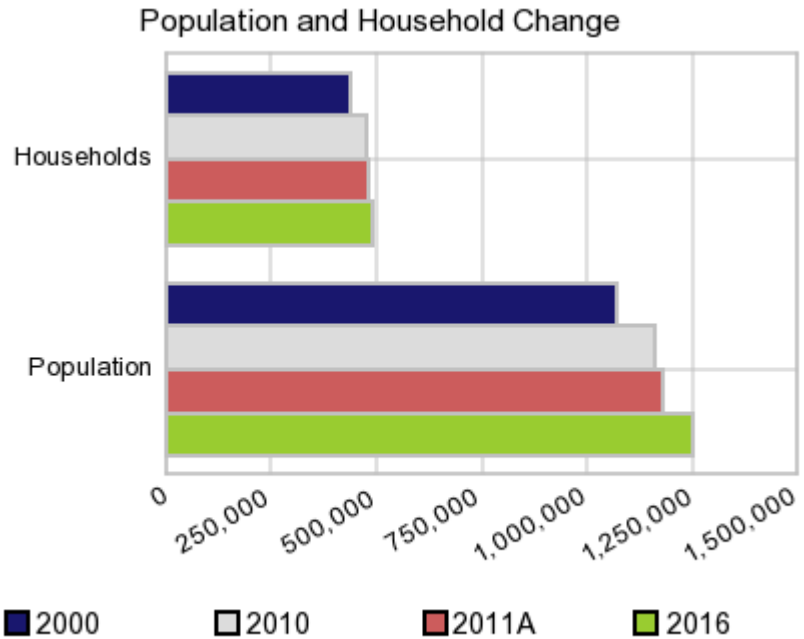
Current Geography Selection: (1 Selected) Counties: Franklin County

Executive Summary Report with Charts

Population Demographics:

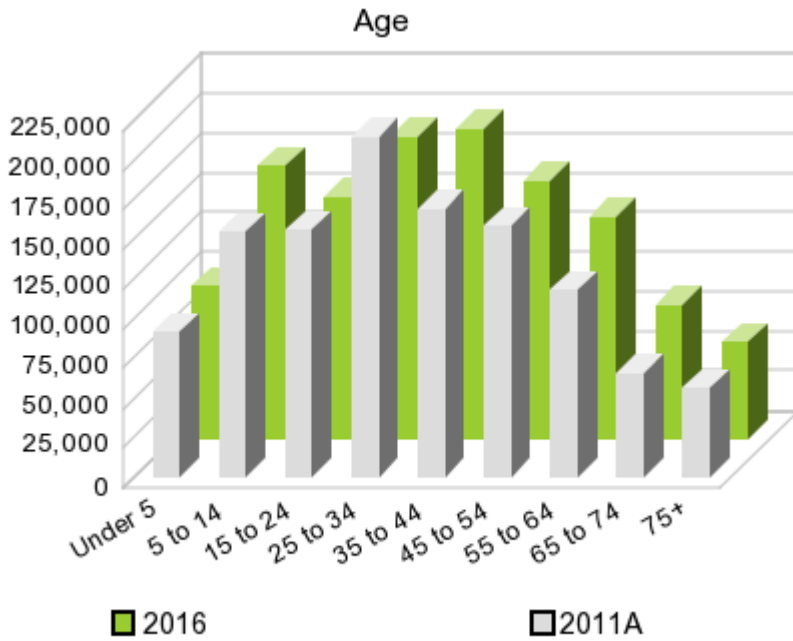
The number of households in the study area in 2000 was **438,778** and changed to **477,235** in 2010, representing a change of **8.8%**. The household count in 2011A was **479,708** and the household projection for 2016 is **489,577**, a change of **2.1%**.

The population in the study area in 2000 was **1,068,978** and in 2010 it was **1,163,414**, roughly a **8.8%** change. The population in 2011A was **1,181,119** and the projection for 2016 is **1,250,842** representing a change of **5.9%**.



	2000 Census	2010 Census	2011A Estimate	2016 Projection	Percent Change	
					2000 to 2010	2011 to 2016
Total Population	1,068,978	1,163,414	1,181,119	1,250,842	8.8%	5.9%
Total Households	438,778	477,235	479,708	489,577	26.0%	2.1%

Population by Age



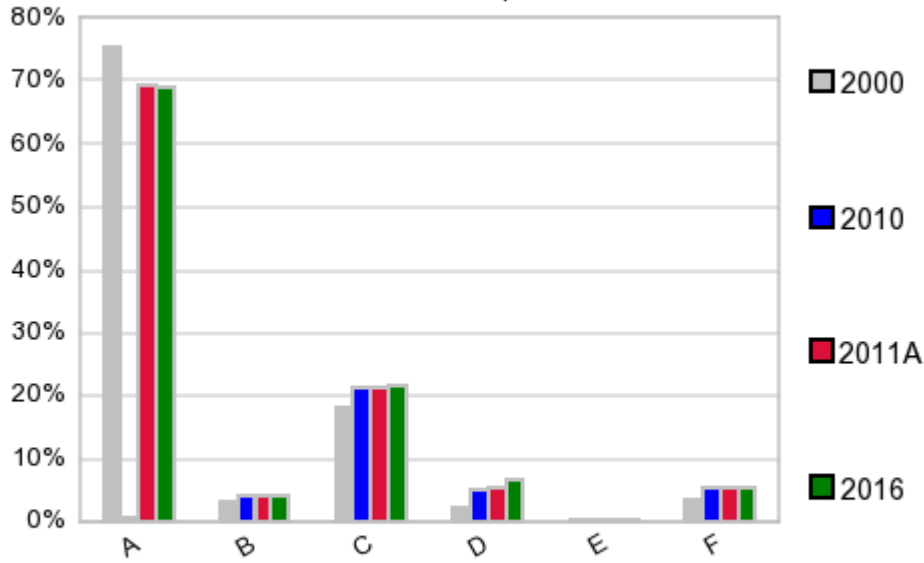
In 1990, the median age of the total population in the study area was **31**, and in 2000, it was **33**. The median age in 2011A is **34** and it is predicted to change in five years to **36** years. In 2011A, females represented **51.2%** of the population with a median age of **35** and males represented **48.8%** of the population with a median age of **33** years. In 2011A, the most prominent age group in this geography is **Age 25 to 34** years. The age group least represented in this geography is **75 +** years.

Age Groups*

	1990 Census		2000 Census		2011A Estimate		2016 Projection		Percent Change	
		%		%		%		%	1990 to 2000	2000 to 2011 to 2016
0 to 4	73,526	7.7%	77,363	7.2%	90,809	7.7%	96,026	7.7%	5.2%	5.7%
5 to 14	127,951	13.3%	150,168	14.0%	154,160	13.1%	171,754	13.7%	17.4%	11.4%
15 to 19	68,991	7.2%	74,374	7.0%	75,522	6.4%	75,232	6.0%	7.8%	-0.4%
20 to 24	95,265	9.9%	91,706	8.6%	80,470	6.8%	76,236	6.1%	-3.7%	-5.3%
25 to 34	192,913	20.1%	183,255	17.1%	213,561	18.1%	189,228	15.1%	-5.0%	-11.4%
35 to 44	147,423	15.3%	172,809	16.2%	168,847	14.3%	194,983	15.6%	17.2%	15.5%
45 to 54	89,384	9.3%	136,787	12.8%	158,658	13.4%	162,057	13.0%	53.0%	2.1%
55 to 64	73,328	7.6%	78,210	7.3%	117,369	9.9%	140,420	11.2%	6.7%	19.6%
65 to 74	55,171	5.7%	56,731	5.3%	65,158	5.5%	83,864	6.7%	2.8%	28.7%
75 +	37,496	3.9%	47,575	4.5%	56,519	4.8%	61,001	4.9%	26.9%	7.9%

Population by Race/Ethnicity

Race and Ethnicity Percent Composition



In 2011A, the predominant race/ethnicity category in this study area is **White**. The race & ethnicity category least represented in this geography is **American Indian, Alaska Native**.

A: White
 B: Asian Pac Islr
 C: Black
 D: Hispanic
 E: Amer Indian or Alaska Native
 F: Other or Multi Race

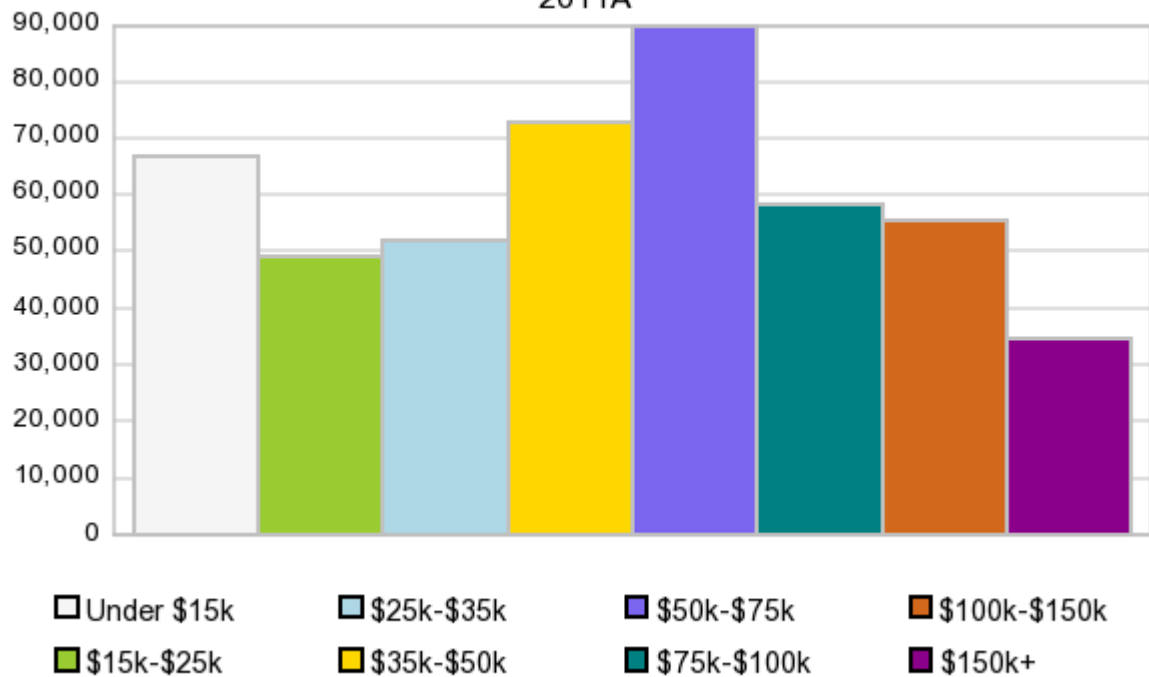
Race & Ethnicity

	2000		2010		2011A		2016		Percent Change	
	Census	%	Census	%	Estimate	%	Projection	%	2000 to 2010	2011 to 2016
White	806,851	75.5%	805,617	69.2%	816,849	69.2%	860,791	68.8%	-0.2%	5.4%
Black	191,196	17.9%	247,225	21.3%	252,120	21.4%	271,723	21.7%	29.3%	7.8%
American Indian or Alaska Native	2,899	0.3%	2,852	0.2%	2,893	0.2%	3,055	0.2%	-1.6%	5.6%
Asian/Hawaiian/PI	33,250	3.1%	45,742	3.9%	46,316	3.9%	48,560	3.9%	37.6%	4.8%
Some Other Race	10,992	1.0%	27,272	2.3%	19,616	1.7%	20,815	1.7%	148.1%	6.1%
Two or More Races	23,790	2.2%	34,706	3.0%	43,326	3.7%	45,899	3.7%	45.9%	5.9%
Hispanic Ethnicity	24,279	2.3%	55,718	4.8%	60,572	5.1%	79,959	6.4%	129.5%	32.0%
Not Hispanic or Latino	1,044,699	97.7%	1,107,696	95.2%	1,120,536	94.9%	1,170,897	93.6%	6.0%	4.5%

Households by Income

Households by Income Group 2011A

In 2011A the predominant household income category in this study area is **\$50K - \$75K**, and the income group that is least represented in this geography is **\$150K +**.



HH Income Categories*

	1990 Census		2000 Census		2011A Estimate		2016 Projection		Percent Change	
		%		%		%		%	1990 to 2000	2011 to 2016
\$0 - \$15,000	84,332	22.3%	63,731	14.5%	67,151	14.0%	68,832	14.1%	-24.4%	2.5%
\$15,000 - \$24,999	69,157	18.3%	53,876	12.3%	49,195	10.3%	47,276	9.7%	-22.1%	-3.9%
\$25,000 - \$34,999	63,954	16.9%	58,798	13.4%	51,881	10.8%	48,765	10.0%	-8.1%	-6.0%
\$35,000 - \$49,999	72,574	19.2%	74,090	16.9%	72,724	15.2%	71,437	14.6%	2.1%	-1.8%
\$50,000 - \$74,999	57,117	15.1%	91,638	20.9%	89,837	18.7%	87,721	17.9%	60.4%	-2.4%
\$75,000 - \$99,999	18,304	4.8%	46,029	10.5%	58,353	12.2%	62,651	12.8%	151.5%	7.4%
\$100,000 - \$149,999	8,584	2.3%	33,167	7.6%	55,795	11.6%	63,288	12.9%	286.4%	13.4%
\$150,000 +	4,783	1.3%	17,449	4.0%	34,762	7.2%	39,613	8.1%	264.8%	14.0%
Average Hhld Income	\$37,394		\$55,579		\$66,633		\$71,723		48.6%	7.6%
Median Hhld Income	\$30,449		\$43,043		\$49,755		\$51,985		41.4%	4.5%
Per Capita Income	\$14,856		\$22,813		\$27,679		\$28,716		53.6%	3.7%

*This Census 2010 data has not yet been released

Current year data is for the year **2011**, 5 year projected data is for the year **2016**. More About Our Data.
Demographic data © 2011 by Experian/Applied Geographic Solutions.

Business List data © 2011 by D&B®. All rights reserved. All D&B information is powered by DUNSRight™, D&B's Quality Process.

Alteryx, DemographicsNow.com and the Alteryx and DemographicsNow.com logos are trademarks of Alteryx, Inc.
All rights reserved.

Privacy Statement | License Agreement