



Date: 05/03/12

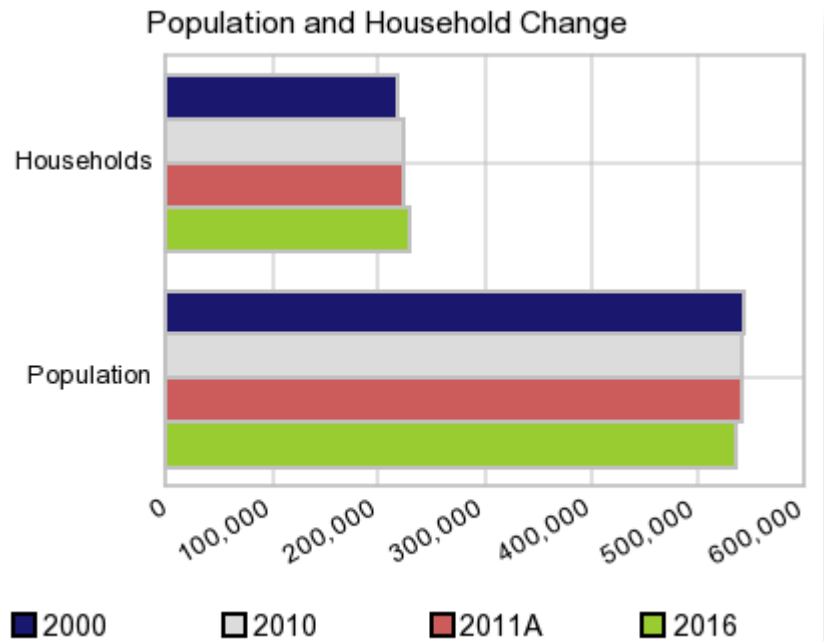
Current Geography Selection: (1 Selected) Counties: Summit County

Executive Summary Report with Charts

Population Demographics:

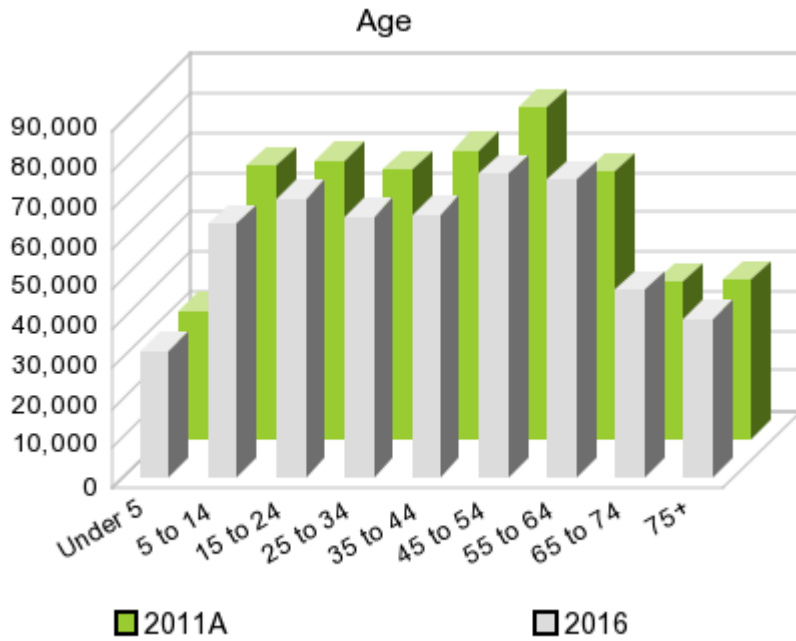
The number of households in the study area in 2000 was **217,788** and changed to **222,781** in 2010, representing a change of **2.3%**. The household count in 2011A was **223,806** and the household projection for 2016 is **227,871**, a change of **1.8%**.

The population in the study area in 2000 was **542,899** and in 2010 it was **541,781**, roughly a **-0.2%** change. The population in 2011A was **540,604** and the projection for 2016 is **535,442** representing a change of **-1.0%**.



	2000 Census	2010 Census	2011A Estimate	2016 Projection	Percent Change	
					2000 to 2010	2011 to 2016
Total Population	542,899	541,781	540,604	535,442	-0.2%	-1.0%
Total Households	217,788	222,781	223,806	227,871	11.4%	1.8%

Population by Age



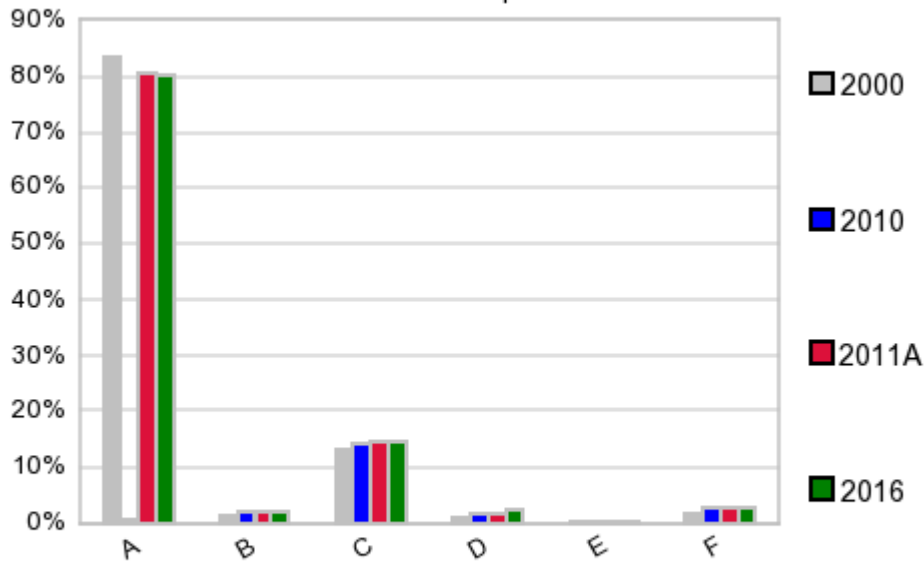
In 1990, the median age of the total population in the study area was **34**, and in 2000, it was **37**. The median age in 2011A is **40** and it is predicted to change in five years to **41** years. In 2011A, females represented **51.8%** of the population with a median age of **41** and males represented **48.3%** of the population with a median age of **38** years. In 2011A, the most prominent age group in this geography is **Age 45 to 54** years. The age group least represented in this geography is **0 to 4** years.

Age Groups*

	1990		2000		2011A		2016		Percent Change	
	Census	%	Census	%	Estimate	%	Projection	%	1990 to 2000	2011 to 2016
0 to 4	36,099	7.0%	36,002	6.6%	32,351	6.0%	31,553	5.9%	-0.3%	-2.5%
5 to 14	69,737	13.5%	77,661	14.3%	68,589	12.7%	63,673	11.9%	11.4%	-7.2%
15 to 19	35,285	6.9%	35,709	6.6%	36,426	6.7%	34,626	6.5%	1.2%	-4.9%
20 to 24	37,173	7.2%	31,009	5.7%	33,590	6.2%	35,539	6.6%	-16.6%	5.8%
25 to 34	85,423	16.6%	72,667	13.4%	67,560	12.5%	65,809	12.3%	-14.9%	-2.6%
35 to 44	79,192	15.4%	88,146	16.2%	72,343	13.4%	65,946	12.3%	11.3%	-8.8%
45 to 54	52,104	10.1%	77,634	14.3%	83,295	15.4%	76,495	14.3%	49.0%	-8.2%
55 to 64	48,766	9.5%	47,499	8.8%	67,219	12.4%	74,925	14.0%	-2.6%	11.5%
65 to 74	42,921	8.3%	39,594	7.3%	39,354	7.3%	47,188	8.8%	-7.8%	19.9%
75 +	28,293	5.5%	36,978	6.8%	39,879	7.4%	39,664	7.4%	30.7%	-0.5%

Population by Race/Ethnicity

Race and Ethnicity Percent Composition



In 2011A, the predominant race/ethnicity category in this study area is **White**. The race & ethnicity category least represented in this geography is **American Indian, Alaska Native**.

A: White
 B: Asian Pac Islr
 C: Black
 D: Hispanic
 E: Amer Indian or Alaska Native
 F: Other or Multi Race

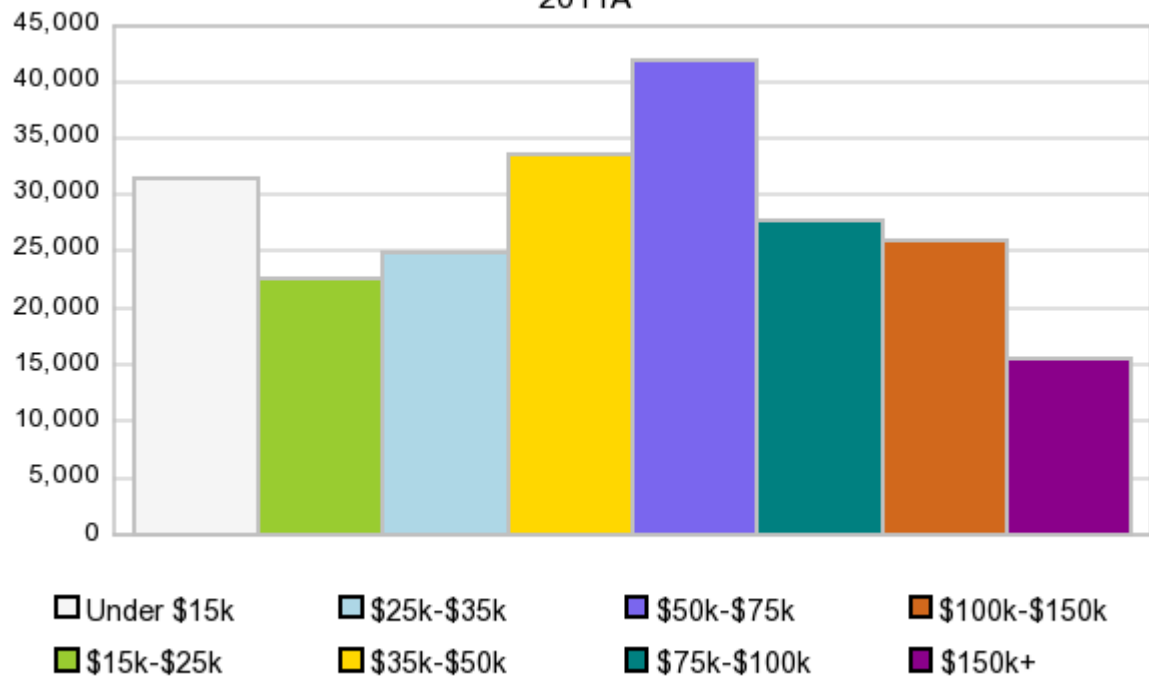
Race & Ethnicity

Race & Ethnicity	2000		2010		2011A		2016		Percent Change	
	Census	%	Census	%	Estimate	%	Projection	%	2000 to 2010	2011 to 2016
White	453,336	83.5%	436,487	80.6%	435,194	80.5%	429,707	80.3%	-3.7%	-1.3%
Black	71,608	13.2%	78,120	14.4%	78,319	14.5%	78,991	14.8%	9.1%	0.9%
American Indian or Alaska Native	1,086	0.2%	1,015	0.2%	1,010	0.2%	1,001	0.2%	-6.5%	-0.9%
Asian/Hawaiian/PI	7,741	1.4%	12,018	2.2%	11,962	2.2%	11,734	2.2%	55.3%	-1.9%
Some Other Race	1,590	0.3%	2,602	0.5%	2,453	0.5%	2,433	0.5%	63.6%	-0.8%
Two or More Races	7,538	1.4%	11,539	2.1%	11,663	2.2%	11,570	2.2%	53.1%	-0.8%
Hispanic Ethnicity	4,781	0.9%	8,660	1.6%	9,517	1.8%	12,926	2.4%	81.1%	35.8%
Not Hispanic or Latino	538,118	99.1%	533,121	98.4%	531,086	98.2%	522,514	97.6%	-0.9%	-1.6%

Households by Income

Households by Income Group 2011A

In 2011A the predominant household income category in this study area is **\$50K - \$75K**, and the income group that is least represented in this geography is **\$150K +**.



HH Income Categories*

	1990 Census		2000 Census		2011A Estimate		2016 Projection		Percent Change	
	Count	%	Count	%	Count	%	Count	%	1990 to 2000	2000 to 2011
\$0 - \$15,000	49,565	24.8%	32,781	15.1%	31,493	14.1%	32,082	14.1%	-33.9%	1.9%
\$15,000 - \$24,999	36,159	18.1%	27,961	12.8%	22,609	10.1%	21,171	9.3%	-22.7%	-6.4%
\$25,000 - \$34,999	33,346	16.7%	28,739	13.2%	24,888	11.1%	23,852	10.5%	-13.8%	-4.2%
\$35,000 - \$49,999	35,735	17.9%	36,177	16.6%	33,748	15.1%	33,145	14.5%	1.2%	-1.8%
\$50,000 - \$74,999	28,906	14.5%	44,598	20.5%	41,923	18.7%	41,001	18.0%	54.3%	-2.2%
\$75,000 - \$99,999	9,220	4.6%	22,850	10.5%	27,881	12.5%	29,757	13.1%	147.8%	6.7%
\$100,000 - \$149,999	4,562	2.3%	15,625	7.2%	25,861	11.6%	29,630	13.0%	242.5%	14.6%
\$150,000 +	2,486	1.2%	9,057	4.2%	15,414	6.9%	17,251	7.6%	264.3%	11.9%
Average Hhld Income	\$36,711		\$55,839		\$65,335		\$69,745		52.1%	6.8%
Median Hhld Income	\$29,063		\$42,632		\$49,591		\$51,841		46.7%	4.5%
Per Capita Income	\$14,341		\$22,400		\$27,572		\$30,267		56.2%	9.8%

*This Census 2010 data has not yet been released

Current year data is for the year **2011**, 5 year projected data is for the year **2016**. More About Our Data.
Demographic data © 2011 by Experian/Applied Geographic Solutions.

Business List data © 2011 by D&B®. All rights reserved. All D&B information is powered by DUNSRight™, D&B's Quality Process.

Alteryx, DemographicsNow.com and the Alteryx and DemographicsNow.com logos are trademarks of Alteryx, Inc.
All rights reserved.

Privacy Statement | License Agreement