



Date: 05/04/12

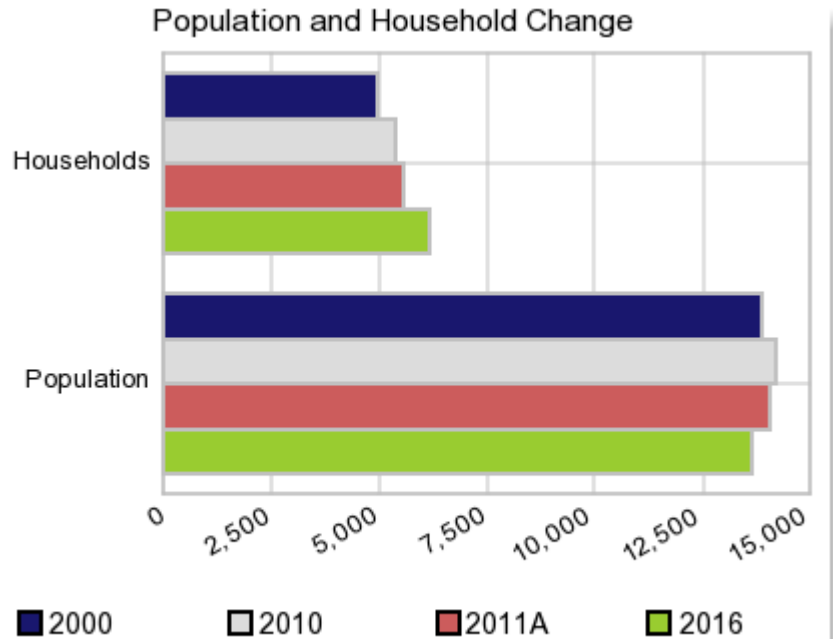
Current Geography Selection: (1 Selected) Counties: Atoka County

## Executive Summary Report with Charts

### Population Demographics:

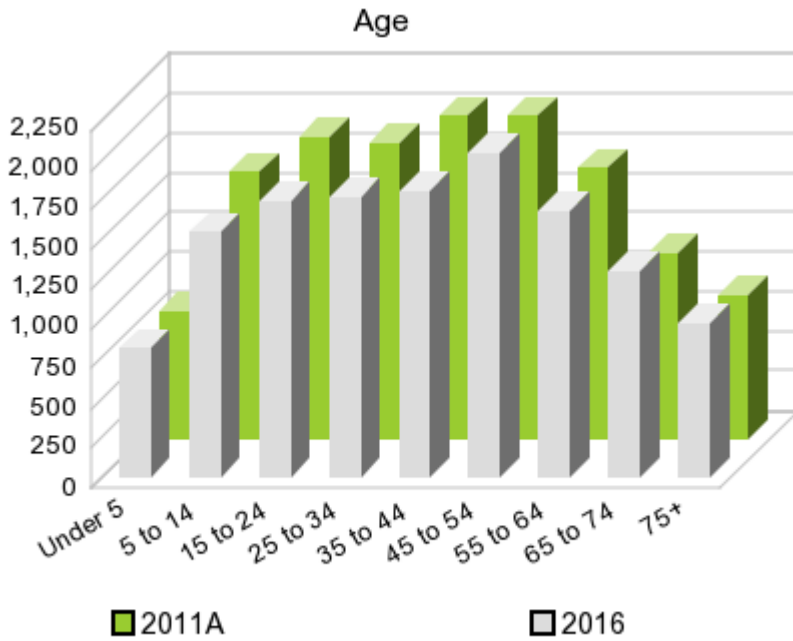
The number of households in the study area in 2000 was **4,964** and changed to **5,391** in 2010, representing a change of **8.6%**. The household count in 2011A was **5,547** and the household projection for 2016 is **6,170**, a change of **11.2%**.

The population in the study area in 2000 was **13,879** and in 2010 it was **14,182**, roughly a **2.2%** change. The population in 2011A was **14,073** and the projection for 2016 is **13,647** representing a change of **-3.0%**.



	2000 Census	2010 Census	2011A Estimate	2016 Projection	Percent Change	
					2000 to 2010	2011 to 2016
Total Population	13,879	14,182	14,073	13,647	2.2%	-3.0%
Total Households	4,964	5,391	5,547	6,170	19.9%	11.2%

### Population by Age



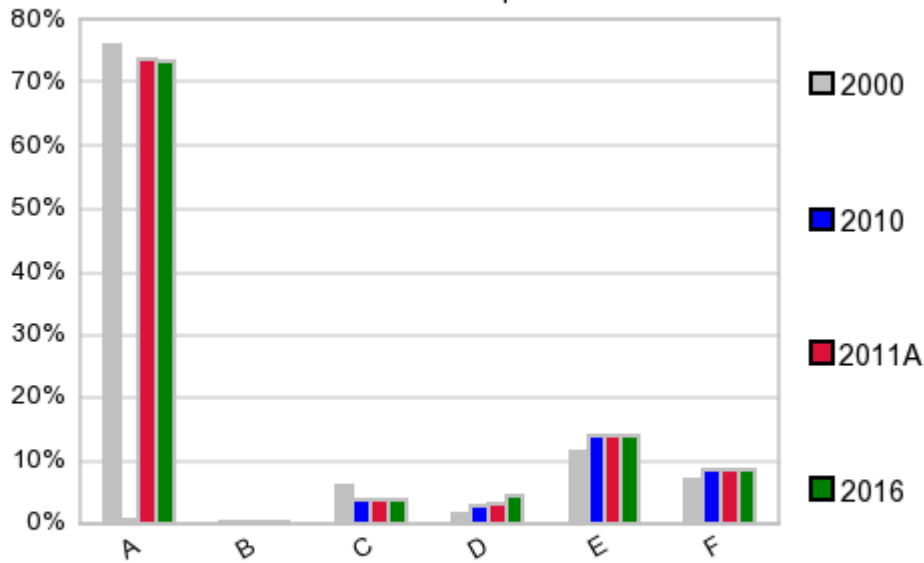
In 1990, the median age of the total population in the study area was **35**, and in 2000, it was **38**. The median age in 2011A is **39** and it is predicted to change in five years to **40** years. In 2011A, females represented **44.6%** of the population with a median age of **42** and males represented **55.4%** of the population with a median age of **37** years. In 2011A, the most prominent age group in this geography is **Age 35 to 44** years. The age group least represented in this geography is **0 to 4** years.

**Age Groups\***

	1990 Census		2000 Census		2011A Estimate		2016 Projection		Percent Change	
		%		%		%		%	1990 to 2000	2011 to 2016
0 to 4	802	6.3%	817	5.9%	808	5.7%	814	6.0%	1.9%	0.7%
5 to 14	1,897	14.8%	1,849	13.3%	1,682	12.0%	1,550	11.4%	-2.5%	-7.8%
15 to 19	991	7.8%	943	6.8%	964	6.9%	823	6.0%	-4.8%	-14.6%
20 to 24	738	5.8%	806	5.8%	929	6.6%	915	6.7%	9.2%	-1.5%
25 to 34	2,005	15.7%	1,817	13.1%	1,860	13.2%	1,759	12.9%	-9.4%	-5.4%
35 to 44	1,755	13.7%	2,218	16.0%	2,031	14.4%	1,797	13.2%	26.4%	-11.5%
45 to 54	1,337	10.5%	1,915	13.8%	2,026	14.4%	2,043	15.0%	43.2%	0.8%
55 to 64	1,280	10.0%	1,464	10.5%	1,697	12.1%	1,674	12.3%	14.4%	-1.4%
65 to 74	1,101	8.6%	1,089	7.8%	1,168	8.3%	1,296	9.5%	-1.1%	11.0%
75 +	865	6.8%	961	6.9%	905	6.4%	974	7.1%	11.1%	7.6%

**Population by Race/Ethnicity**

### Race and Ethnicity Percent Composition



In 2011A, the predominant race/ethnicity category in this study area is **White**. The race & ethnicity category least represented in this geography is **Asian or Pacific Islander**.

A: White  
 B: Asian Pac Islr  
 C: Black  
 D: Hispanic  
 E: Amer Indian or Alaska Native  
 F: Other or Multi Race

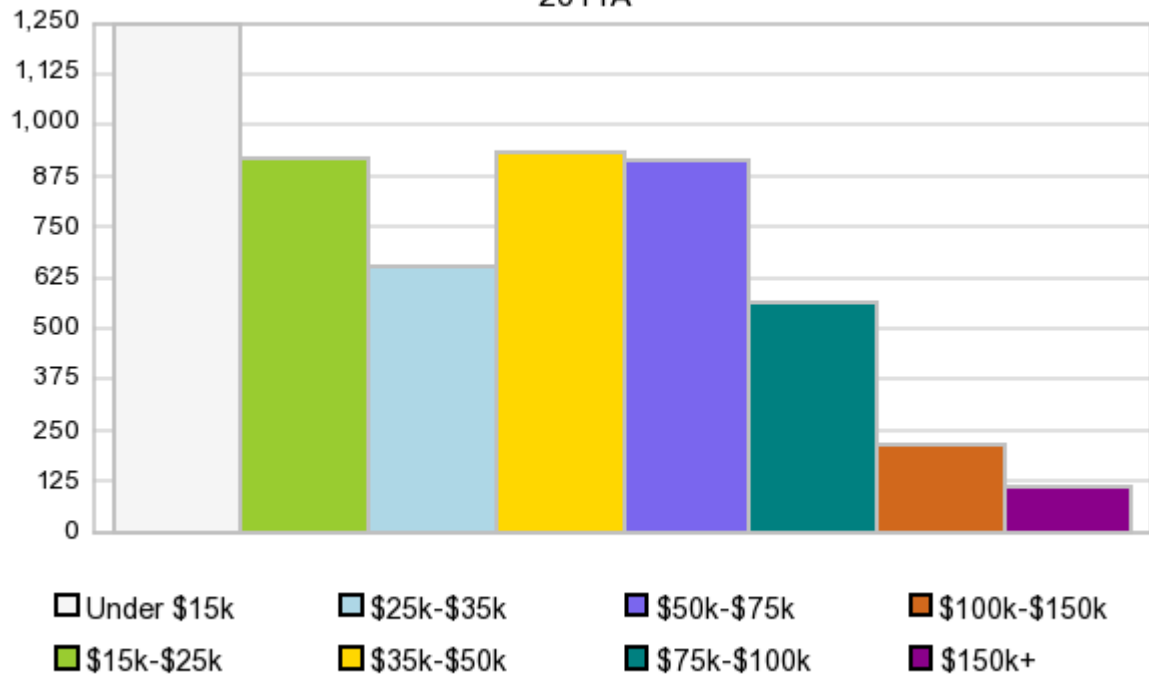
### Race & Ethnicity

Race & Ethnicity	2000		2010		2011A		2016		Percent Change	
	Census	%	Census	%	Estimate	%	Projection	%	2000 to 2010	2011 to 2016
White	10,528	75.9%	10,460	73.8%	10,375	73.7%	10,044	73.6%	-0.6%	-3.2%
Black	814	5.9%	529	3.7%	526	3.7%	511	3.7%	-35.0%	-2.9%
American Indian or Alaska Native	1,578	11.4%	1,964	13.8%	1,952	13.9%	1,904	14.0%	24.5%	-2.5%
Asian/Hawaiian/PI	34	0.2%	62	0.4%	61	0.4%	60	0.4%	82.4%	-1.6%
Some Other Race	80	0.6%	158	1.1%	77	0.6%	77	0.6%	97.5%	0.0%
Two or More Races	845	6.1%	1,009	7.1%	1,082	7.7%	1,051	7.7%	19.4%	-2.9%
Hispanic Ethnicity	196	1.4%	409	2.9%	441	3.1%	570	4.2%	108.7%	29.3%
Not Hispanic or Latino	13,683	98.6%	13,773	97.1%	13,632	96.9%	13,077	95.8%	0.7%	-4.1%

### Households by Income

### Households by Income Group 2011A

In 2011A the predominant household income category in this study area is **\$0 - \$15K**, and the income group that is least represented in this geography is **\$150K +**.



#### HH Income Categories\*

	1990 Census		2000 Census		2011A Estimate		2016 Projection		Percent Change	
		%		%		%		%	1990 to 2000	2011 to 2016
\$0 - \$15,000	2,351	52.3%	1,611	32.5%	1,245	22.4%	1,170	19.0%	-31.5%	-6.0%
\$15,000 - \$24,999	922	20.5%	886	17.8%	914	16.5%	967	15.7%	-3.9%	5.8%
\$25,000 - \$34,999	516	11.5%	844	17.0%	656	11.8%	606	9.8%	63.6%	-7.6%
\$35,000 - \$49,999	466	10.4%	715	14.4%	935	16.9%	1,085	17.6%	53.4%	16.0%
\$50,000 - \$74,999	187	4.2%	566	11.4%	909	16.4%	1,129	18.3%	202.7%	24.2%
\$75,000 - \$99,999	37	0.8%	190	3.8%	561	10.1%	775	12.6%	413.5%	38.1%
\$100,000 - \$149,999	20	0.4%	83	1.7%	216	3.9%	291	4.7%	315.0%	34.7%
\$150,000 +	11	0.2%	69	1.4%	111	2.0%	147	2.4%	527.3%	32.4%
Average Hhld Income	\$19,469		\$32,392		\$47,322		\$53,221		66.4%	12.5%
Median Hhld Income	\$13,855		\$24,821		\$34,237		\$38,094		79.1%	11.3%
Per Capita Income	\$8,120		\$11,586		\$19,463		\$25,050		42.7%	28.7%

\*This Census 2010 data has not yet been released

Current year data is for the year **2011**, 5 year projected data is for the year **2016**. More About Our Data.  
Demographic data © 2011 by Experian/Applied Geographic Solutions.

Business List data © 2011 by D&B®. All rights reserved. All D&B information is powered by DUNSRight™, D&B's Quality Process.

Alteryx, DemographicsNow.com and the Alteryx and DemographicsNow.com logos are trademarks of Alteryx, Inc.  
All rights reserved.

Privacy Statement | License Agreement