



Date: 05/04/12

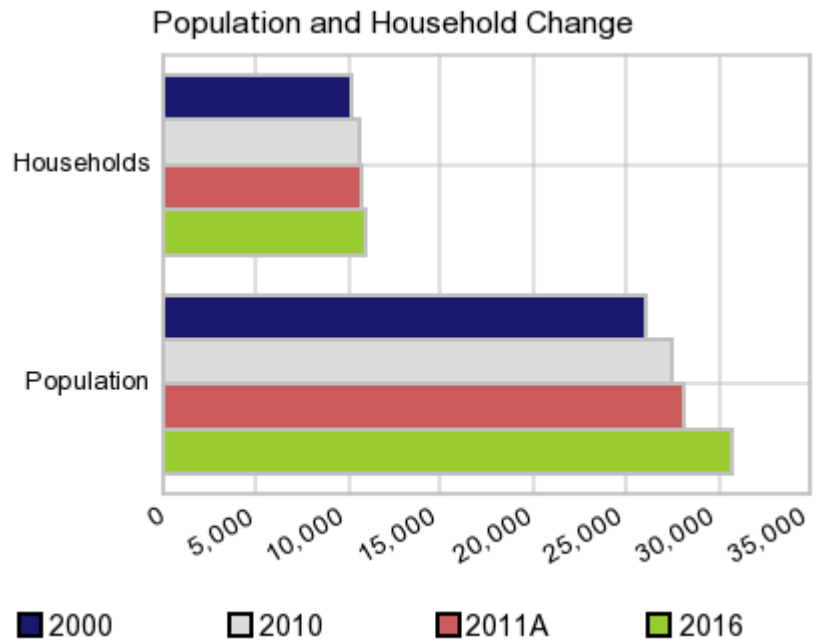
Current Geography Selection: (1 Selected) Counties: Custer County

## Executive Summary Report with Charts

### Population Demographics:

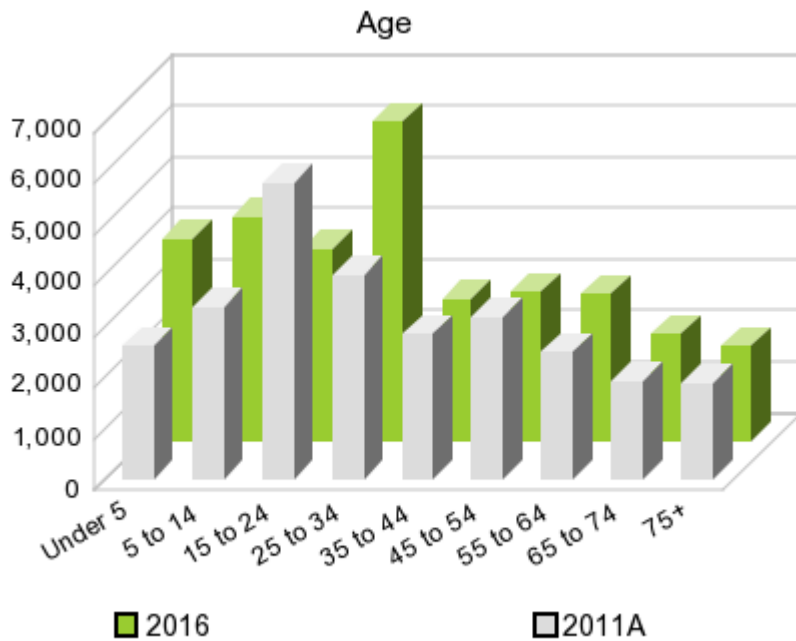
The number of households in the study area in 2000 was **10,136** and changed to **10,698** in 2010, representing a change of **5.5%**. The household count in 2011A was **10,748** and the household projection for 2016 is **10,948**, a change of **1.9%**.

The population in the study area in 2000 was **26,142** and in 2010 it was **27,469**, roughly a **5.1%** change. The population in 2011A was **28,131** and the projection for 2016 is **30,777** representing a change of **9.4%**.



	2000 Census	2010 Census	2011A Estimate	2016 Projection	Percent Change	
					2000 to 2010	2011 to 2016
Total Population	26,142	27,469	28,131	30,777	5.1%	9.4%
Total Households	10,136	10,698	10,748	10,948	7.9%	1.9%

### Population by Age



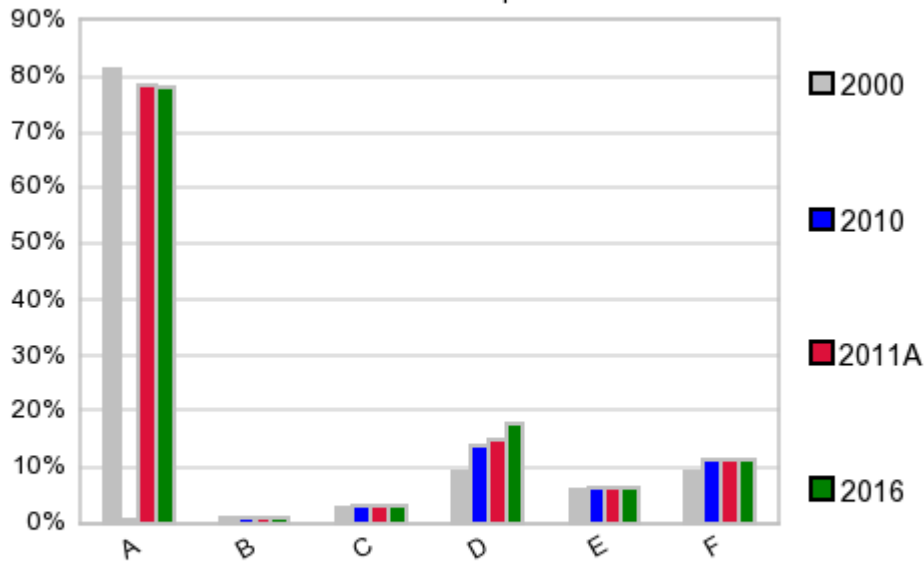
In 1990, the median age of the total population in the study area was **30**, and in 2000, it was **33**. The median age in 2011A is **29** and it is predicted to change in five years to **30** years. In 2011A, females represented **51.6%** of the population with a median age of **30** and males represented **48.4%** of the population with a median age of **28** years. In 2011A, the most prominent age group in this geography is **Age 25 to 34** years. The age group least represented in this geography is **75 +** years.

#### Age Groups\*

	1990		2000		2011A		2016		Percent Change	
	Census	%	Census	%	Estimate	%	Projection	%	1990 to 2000	2011 to 2016
0 to 4	1,924	7.2%	1,589	6.1%	2,620	9.3%	3,934	12.8%	-17.4%	50.2%
5 to 14	4,176	15.5%	3,466	13.3%	3,361	11.9%	4,376	14.2%	-17.0%	30.2%
15 to 19	2,427	9.0%	2,704	10.3%	2,164	7.7%	1,611	5.2%	11.4%	-25.6%
20 to 24	2,976	11.1%	3,140	12.0%	3,628	12.9%	2,127	6.9%	5.5%	-41.4%
25 to 34	4,109	15.3%	2,819	10.8%	3,995	14.2%	6,229	20.2%	-31.4%	55.9%
35 to 44	3,337	12.4%	3,576	13.7%	2,834	10.1%	2,758	9.0%	7.2%	-2.7%
45 to 54	2,353	8.7%	3,065	11.7%	3,173	11.3%	2,920	9.5%	30.3%	-8.0%
55 to 64	2,007	7.5%	2,190	8.4%	2,516	8.9%	2,889	9.4%	9.1%	14.8%
65 to 74	1,801	6.7%	1,772	6.8%	1,931	6.9%	2,074	6.7%	-1.6%	7.4%
75 +	1,787	6.6%	1,821	7.0%	1,898	6.7%	1,854	6.0%	1.9%	-2.3%

#### Population by Race/Ethnicity

### Race and Ethnicity Percent Composition



In 2011A, the predominant race/ethnicity category in this study area is **White**. The race & ethnicity category least represented in this geography is **Asian or Pacific Islander**.

A: White  
 B: Asian Pac Islidr  
 C: Black  
 D: Hispanic  
 E: Amer Indian or Alaska Native  
 F: Other or Multi Race

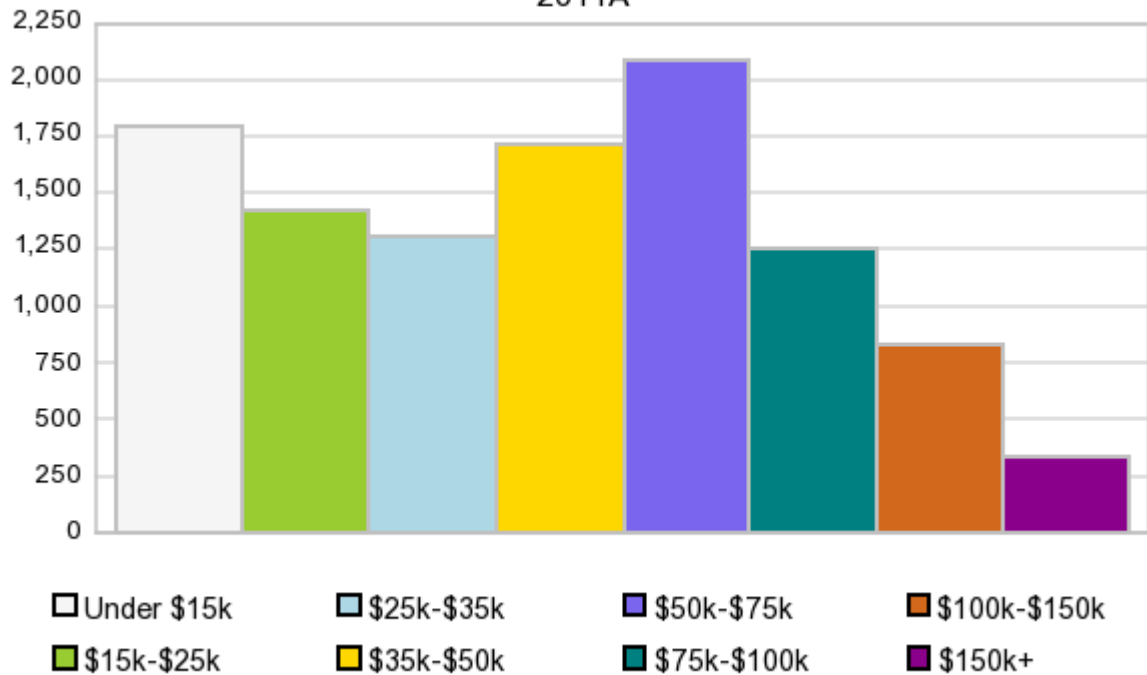
### Race & Ethnicity

Race & Ethnicity	2000 Census		2010 Census		2011A Estimate		2016 Projection		Percent Change	
	Count	%	Count	%	Count	%	Count	%	2000 to 2010	2011 to 2016
White	21,283	81.4%	21,456	78.1%	21,965	78.1%	24,000	78.0%	0.8%	9.3%
Black	751	2.9%	831	3.0%	852	3.0%	937	3.0%	10.7%	10.0%
American Indian or Alaska Native	1,518	5.8%	1,742	6.3%	1,787	6.4%	1,969	6.4%	14.8%	10.2%
Asian/Hawaiian/PI	239	0.9%	289	1.1%	296	1.1%	323	1.1%	20.9%	9.1%
Some Other Race	1,515	5.8%	2,081	7.6%	1,943	6.9%	2,120	6.9%	37.4%	9.1%
Two or More Races	836	3.2%	1,070	3.9%	1,288	4.6%	1,428	4.6%	28.0%	10.9%
Hispanic Ethnicity	2,361	9.0%	3,830	13.9%	4,165	14.8%	5,504	17.9%	62.2%	32.1%
Not Hispanic or Latino	23,781	91.0%	23,639	86.1%	23,966	85.2%	25,273	82.1%	-0.6%	5.5%

### Households by Income

### Households by Income Group 2011A

In 2011A the predominant household income category in this study area is **\$50K - \$75K**, and the income group that is least represented in this geography is **\$150K +**.



#### HH Income Categories\*

	1990 Census		2000 Census		2011A Estimate		2016 Projection		Percent Change	
		%		%		%		%	1990 to 2000	2011 to 2016
\$0 - \$15,000	3,363	33.9%	2,453	24.2%	1,796	16.7%	1,582	14.5%	-27.1%	-11.9%
\$15,000 - \$24,999	1,992	20.1%	1,871	18.5%	1,426	13.3%	1,257	11.5%	-6.1%	-11.9%
\$25,000 - \$34,999	1,575	15.9%	1,699	16.8%	1,305	12.1%	1,162	10.6%	7.9%	-11.0%
\$35,000 - \$49,999	1,551	15.6%	1,527	15.1%	1,714	15.9%	1,761	16.1%	-1.5%	2.7%
\$50,000 - \$74,999	1,052	10.6%	1,557	15.4%	2,087	19.4%	2,263	20.7%	48.0%	8.4%
\$75,000 - \$99,999	232	2.3%	546	5.4%	1,251	11.6%	1,517	13.9%	135.3%	21.3%
\$100,000 - \$149,999	90	0.9%	330	3.3%	832	7.7%	1,015	9.3%	266.7%	22.0%
\$150,000 +	42	0.4%	153	1.5%	337	3.1%	391	3.6%	264.3%	16.0%
Average Hhld Income	\$27,837		\$39,232		\$55,380		\$63,592		40.9%	14.8%
Median Hhld Income	\$22,635		\$28,758		\$42,312		\$47,702		27.1%	12.7%
Per Capita Income	\$10,460		\$15,211		\$22,209		\$23,755		45.4%	7.0%

\*This Census 2010 data has not yet been released

Current year data is for the year **2011**, 5 year projected data is for the year **2016**. More About Our Data.  
Demographic data © 2011 by Experian/Applied Geographic Solutions.

Business List data © 2011 by D&B®. All rights reserved. All D&B information is powered by DUNSRight™, D&B's Quality Process.

Alteryx, DemographicsNow.com and the Alteryx and DemographicsNow.com logos are trademarks of Alteryx, Inc.  
All rights reserved.

Privacy Statement | License Agreement