



Date: 05/04/12

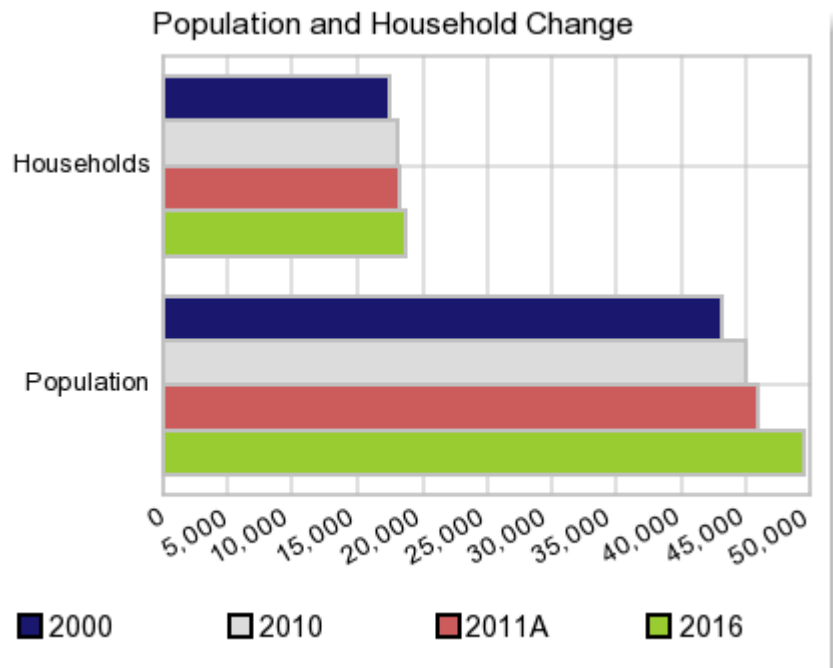
Current Geography Selection: (1 Selected) Counties: Stephens County

Executive Summary Report with Charts

Population Demographics:

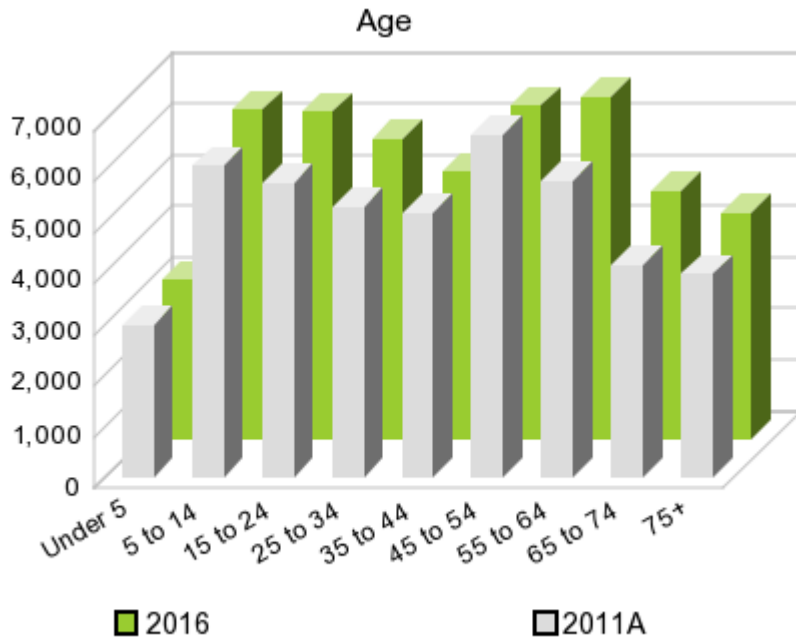
The number of households in the study area in 2000 was **17,463** and changed to **18,127** in 2010, representing a change of **3.8%**. The household count in 2011A was **18,241** and the household projection for 2016 is **18,687**, a change of **2.4%**.

The population in the study area in 2000 was **43,182** and in 2010 it was **45,048**, roughly a **4.3%** change. The population in 2011A was **45,951** and the projection for 2016 is **49,570** representing a change of **7.9%**.



	2000 Census	2010 Census	2011A Estimate	2016 Projection	Percent Change	
					2000 to 2010	2011 to 2016
Total Population	43,182	45,048	45,951	49,570	4.3%	7.9%
Total Households	17,463	18,127	18,241	18,687	8.1%	2.4%

Population by Age



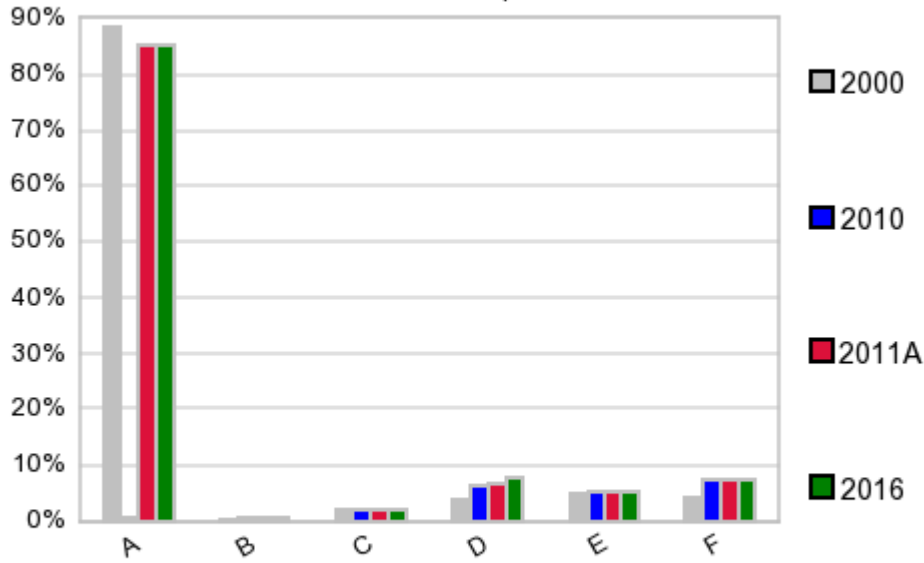
In 1990, the median age of the total population in the study area was **37**, and in 2000, it was **40**. The median age in 2011A is **41** and it is predicted to change in five years to **40** years. In 2011A, females represented **51.5%** of the population with a median age of **43** and males represented **48.5%** of the population with a median age of **39** years. In 2011A, the most prominent age group in this geography is **Age 45 to 54** years. The age group least represented in this geography is **18 to 24** years.

Age Groups*

	1990 Census		2000 Census		2011A Estimate		2016 Projection		Percent Change	
		%		%		%		%	1990 to 2000	2011 to 2016
0 to 4	2,702	6.4%	2,707	6.3%	3,006	6.5%	3,120	6.3%	0.2%	3.8%
5 to 14	6,407	15.1%	5,889	13.6%	6,074	13.2%	6,451	13.0%	-8.1%	6.2%
15 to 19	2,864	6.8%	3,138	7.3%	2,968	6.5%	3,224	6.5%	9.6%	8.6%
20 to 24	2,013	4.8%	2,245	5.2%	2,773	6.0%	3,159	6.4%	11.5%	13.9%
25 to 34	5,916	14.0%	4,438	10.3%	5,288	11.5%	5,866	11.8%	-25.0%	10.9%
35 to 44	5,970	14.1%	6,415	14.9%	5,199	11.3%	5,239	10.6%	7.5%	0.8%
45 to 54	4,160	9.8%	5,950	13.8%	6,715	14.6%	6,505	13.1%	43.0%	-3.1%
55 to 64	4,572	10.8%	4,418	10.2%	5,802	12.6%	6,702	13.5%	-3.4%	15.5%
65 to 74	4,158	9.8%	4,253	9.9%	4,144	9.0%	4,860	9.8%	2.3%	17.3%
75 +	3,536	8.4%	3,729	8.6%	3,976	8.7%	4,436	9.0%	5.5%	11.6%

Population by Race/Ethnicity

Race and Ethnicity Percent Composition



In 2011A, the predominant race/ethnicity category in this study area is **White**. The race & ethnicity category least represented in this geography is **Asian or Pacific Islander**.

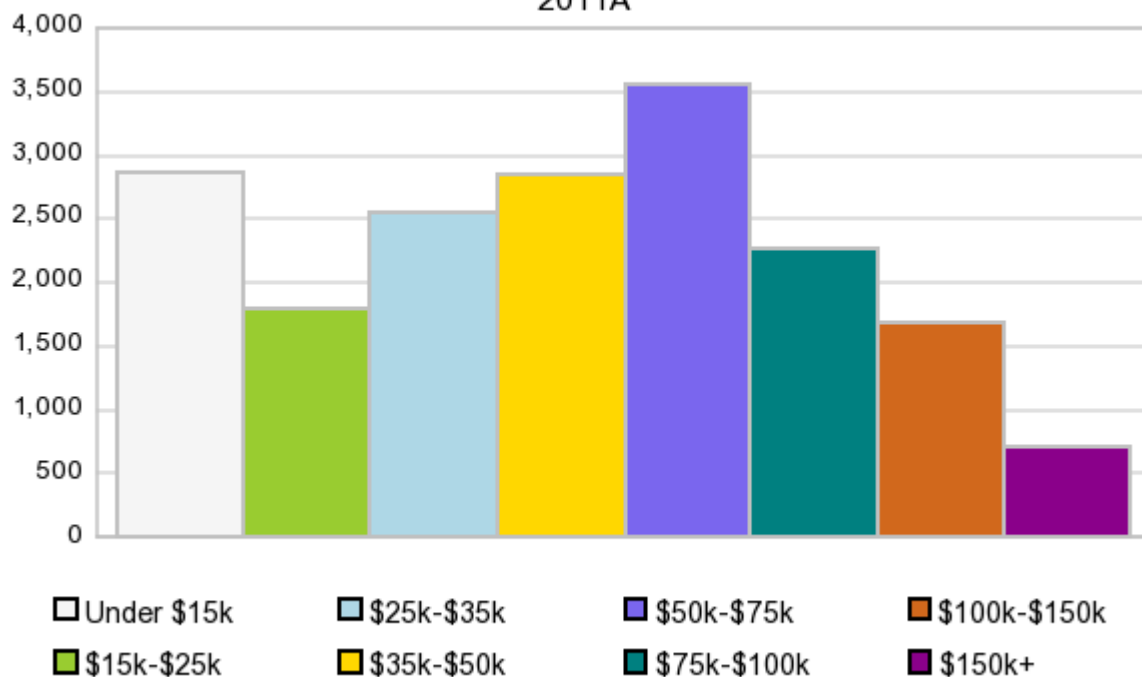
A: White
 B: Asian Pac Islr
 C: Black
 D: Hispanic
 E: Amer Indian or Alaska Native
 F: Other or Multi Race

Race & Ethnicity	2000		2010		2011A		2016		Percent Change	
	Census	%	Census	%	Estimate	%	Projection	%	2000 to 2010	2011 to 2016
White	38,158	88.4%	38,328	85.1%	39,087	85.1%	42,119	85.0%	0.4%	7.8%
Black	950	2.2%	870	1.9%	889	1.9%	966	2.0%	-8.4%	8.7%
American Indian or Alaska Native	2,123	4.9%	2,286	5.1%	2,336	5.1%	2,543	5.1%	7.7%	8.9%
Asian/Hawaiian/PI	145	0.3%	235	0.5%	240	0.5%	259	0.5%	62.1%	7.9%
Some Other Race	623	1.4%	1,169	2.6%	1,096	2.4%	1,178	2.4%	87.6%	7.5%
Two or More Races	1,183	2.7%	2,160	4.8%	2,304	5.0%	2,508	5.1%	82.6%	8.9%
Hispanic Ethnicity	1,709	4.0%	2,790	6.2%	2,992	6.5%	3,794	7.7%	63.3%	26.8%
Not Hispanic or Latino	41,473	96.0%	42,258	93.8%	42,962	93.5%	45,777	92.4%	1.9%	6.6%

Households by Income

Households by Income Group 2011A

In 2011A the predominant household income category in this study area is **\$50K - \$75K**, and the income group that is least represented in this geography is **\$150K +**.



HH Income Categories*

HH Income Categories*	1990 Census		2000 Census		2011A Estimate		2016 Projection		Percent Change	
	Count	%	Count	%	Count	%	Count	%	1990 to 2000	2011 to 2016
\$0 - \$15,000	6,072	36.2%	4,066	23.3%	2,856	15.7%	2,415	12.9%	-33.0%	-15.4%
\$15,000 - \$24,999	3,093	18.5%	3,159	18.1%	1,793	9.8%	1,417	7.6%	2.1%	-21.0%
\$25,000 - \$34,999	2,748	16.4%	2,676	15.3%	2,549	14.0%	2,515	13.5%	-2.6%	-1.3%
\$35,000 - \$49,999	2,632	15.7%	2,981	17.1%	2,839	15.6%	2,790	14.9%	13.3%	-1.7%
\$50,000 - \$74,999	1,712	10.2%	2,652	15.2%	3,558	19.5%	3,913	20.9%	54.9%	10.0%
\$75,000 - \$99,999	297	1.8%	1,125	6.4%	2,256	12.4%	2,690	14.4%	278.8%	19.2%
\$100,000 - \$149,999	163	1.0%	489	2.8%	1,683	9.2%	2,124	11.4%	200.0%	26.2%
\$150,000 +	56	0.3%	315	1.8%	702	3.8%	826	4.4%	462.5%	17.7%
Average Hhld Income	\$27,040		\$40,083		\$57,594		\$67,218		48.2%	16.7%
Median Hhld Income	\$22,553		\$30,715		\$44,731		\$51,161		36.2%	14.4%
Per Capita Income	\$10,786		\$16,210		\$23,114		\$25,616		50.3%	10.8%

*This Census 2010 data has not yet been released

Current year data is for the year **2011**, 5 year projected data is for the year **2016**. More About Our Data.
Demographic data ' 2011 by Experian/Applied Geographic Solutions.

Business List data ' 2011 by D&B^{fi}. All rights reserved. All D&B information is powered by DUNSRight™, D&B's Quality Process.

' 2011. DDR is brought to you by Alteryx, Inc.

Alteryx, DemographicsNow.com and the Alteryx and DemographicsNow.com logos are trademarks of Alteryx, Inc. All rights reserved.

Privacy Statement | License Agreement