



Date: 05/04/12

Current Geography Selection: (1 Selected) Counties: Tulsa County

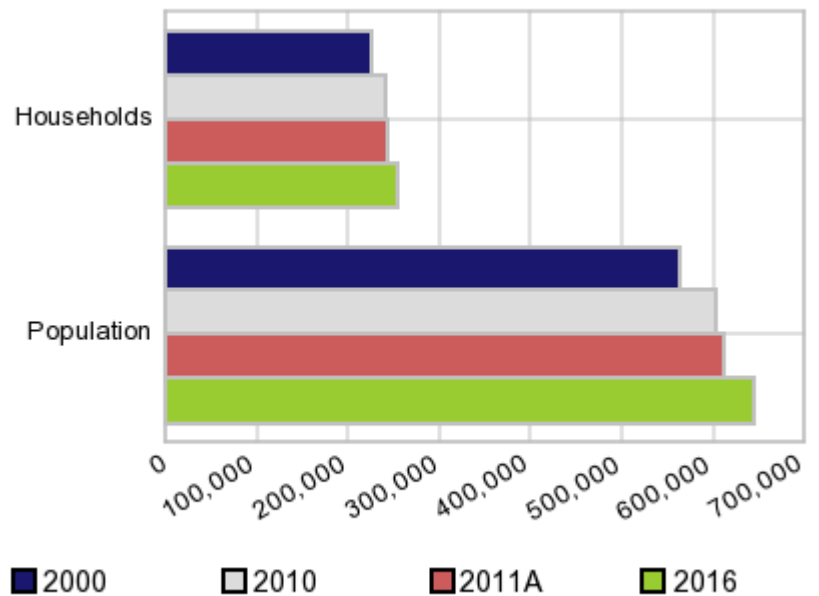
Executive Summary Report with Charts

Population Demographics:

The number of households in the study area in 2000 was **226,892** and changed to **241,737** in 2010, representing a change of **6.5%**. The household count in 2011A was **244,316** and the household projection for 2016 is **254,551**, a change of **4.2%**.

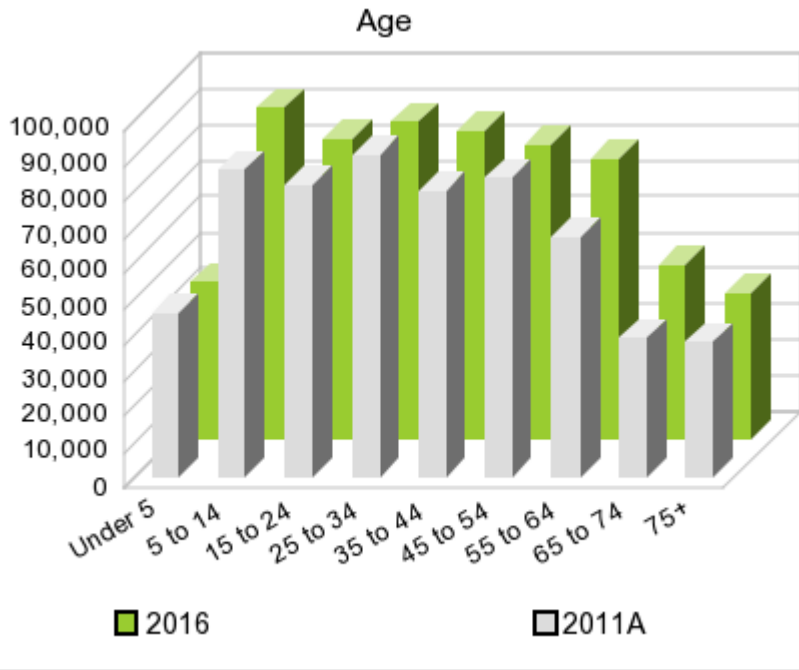
The population in the study area in 2000 was **563,299** and in 2010 it was **603,403**, roughly a **7.1%** change. The population in 2011A was **611,583** and the projection for 2016 is **644,236** representing a change of **5.3%**.

Population and Household Change



	2000 Census	2010 Census	2011A Estimate	2016 Projection	Percent Change	
					2000 to 2010	2011 to 2016
Total Population	563,299	603,403	611,583	644,236	7.1%	5.3%
Total Households	226,892	241,737	244,316	254,551	19.4%	4.2%

Population by Age



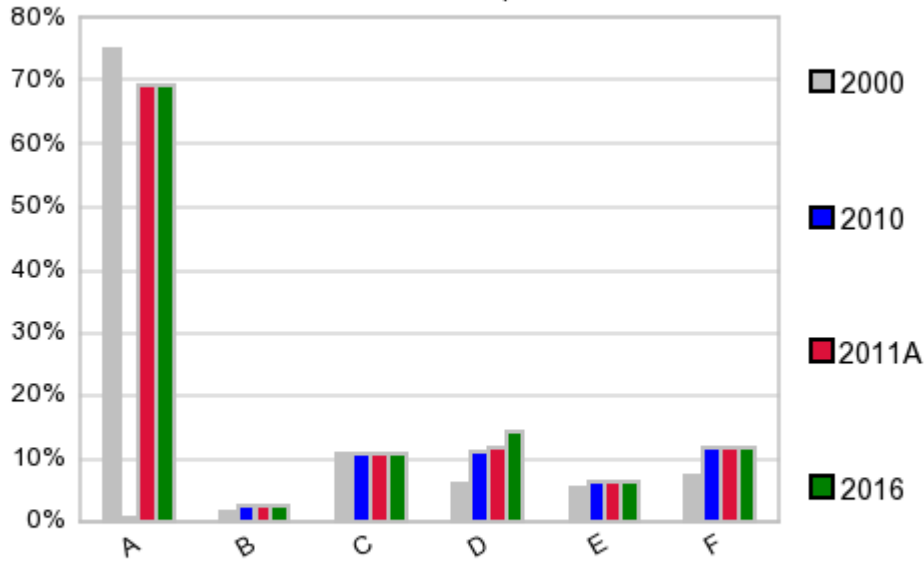
In 1990, the median age of the total population in the study area was **33**, and in 2000, it was **34**. The median age in 2011A is **35** and it is predicted to change in five years to **37** years. In 2011A, females represented **51.1%** of the population with a median age of **37** and males represented **48.9%** of the population with a median age of **34** years. In 2011A, the most prominent age group in this geography is **Age 25 to 34** years. The age group least represented in this geography is **75 +** years.

Age Groups*

	1990		2000		2011A		2016		Percent Change	
	Census	%	Census	%	Estimate	%	Projection	%	1990 to 2000	2011 to 2016
0 to 4	38,829	7.7%	41,434	7.4%	46,077	7.5%	43,576	6.8%	6.7%	-5.4%
5 to 14	73,152	14.5%	82,262	14.6%	85,753	14.0%	92,255	14.3%	12.5%	7.6%
15 to 19	33,702	6.7%	40,528	7.2%	40,439	6.6%	42,316	6.6%	20.3%	4.6%
20 to 24	36,499	7.3%	39,853	7.1%	41,307	6.8%	41,202	6.4%	9.2%	-0.3%
25 to 34	91,217	18.1%	82,566	14.7%	90,102	14.7%	88,796	13.8%	-9.5%	-1.5%
35 to 44	78,944	15.7%	88,520	15.7%	80,077	13.1%	86,064	13.4%	12.1%	7.5%
45 to 54	50,597	10.1%	75,553	13.4%	84,021	13.7%	82,410	12.8%	49.3%	-1.9%
55 to 64	42,174	8.4%	45,848	8.1%	67,033	11.0%	78,546	12.2%	8.7%	17.2%
65 to 74	33,972	6.8%	35,137	6.2%	38,807	6.3%	48,705	7.6%	3.4%	25.5%
75 +	24,257	4.8%	31,598	5.6%	37,898	6.2%	40,306	6.3%	30.3%	6.4%

Population by Race/Ethnicity

Race and Ethnicity Percent Composition



In 2011A, the predominant race/ethnicity category in this study area is **White**. The race & ethnicity category least represented in this geography is **Asian or Pacific Islander**.

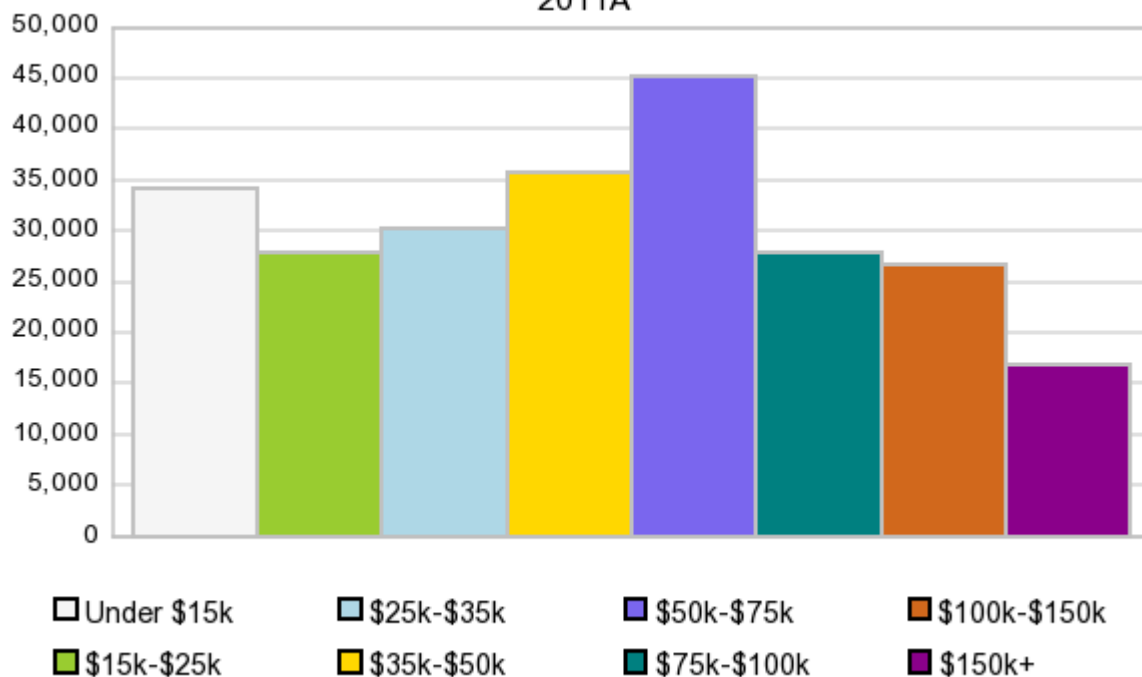
A: White
 B: Asian Pac Islidr
 C: Black
 D: Hispanic
 E: Amer Indian or Alaska Native
 F: Other or Multi Race

Race & Ethnicity	2000		2010		2011A		2016		Percent Change	
	Census	%	Census	%	Estimate	%	Projection	%	2000 to 2010	2011 to 2016
White	422,581	75.0%	417,413	69.2%	422,903	69.2%	444,823	69.1%	-1.2%	5.2%
Black	61,656	11.0%	64,779	10.7%	65,710	10.7%	69,437	10.8%	5.1%	5.7%
American Indian or Alaska Native	29,316	5.2%	36,392	6.0%	36,955	6.0%	39,188	6.1%	24.1%	6.0%
Asian/Hawaiian/PI	9,375	1.7%	14,495	2.4%	14,665	2.4%	15,350	2.4%	54.6%	4.7%
Some Other Race	15,583	2.8%	35,255	5.8%	27,431	4.5%	28,844	4.5%	126.2%	5.2%
Two or More Races	24,788	4.4%	35,069	5.8%	43,917	7.2%	46,588	7.2%	41.5%	6.1%
Hispanic Ethnicity	33,616	6.0%	66,582	11.0%	71,444	11.7%	90,895	14.1%	98.1%	27.2%
Not Hispanic or Latino	529,683	94.0%	536,821	89.0%	540,138	88.3%	553,343	85.9%	1.3%	2.4%

Households by Income

Households by Income Group 2011A

In 2011A the predominant household income category in this study area is **\$50K - \$75K**, and the income group that is least represented in this geography is **\$150K +**.



HH Income Categories*

	1990 Census		2000 Census		2011A Estimate		2016 Projection		Percent Change	
		%		%		%		%	1990 to 2000	2011 to 2016
\$0 - \$15,000	52,825	26.1%	37,257	16.4%	34,085	14.0%	33,725	13.2%	-29.5%	-1.1%
\$15,000 - \$24,999	39,513	19.5%	33,696	14.9%	27,841	11.4%	26,237	10.3%	-14.7%	-5.8%
\$25,000 - \$34,999	33,303	16.4%	32,653	14.4%	30,211	12.4%	29,917	11.8%	-2.0%	-1.0%
\$35,000 - \$49,999	34,255	16.9%	39,032	17.2%	35,620	14.6%	34,697	13.6%	13.9%	-2.6%
\$50,000 - \$74,999	26,699	13.2%	41,414	18.3%	45,153	18.5%	47,157	18.5%	55.1%	4.4%
\$75,000 - \$99,999	7,878	3.9%	20,495	9.0%	27,937	11.4%	31,176	12.3%	160.2%	11.6%
\$100,000 - \$149,999	4,687	2.3%	13,867	6.1%	26,644	10.9%	31,794	12.5%	195.9%	19.3%
\$150,000 +	3,336	1.7%	8,478	3.7%	16,836	6.9%	19,859	7.8%	154.1%	18.0%
Average Hhld Income	\$36,167		\$51,754		\$65,906		\$73,073		43.1%	10.9%
Median Hhld Income	\$27,241		\$38,391		\$47,321		\$51,164		40.9%	8.1%
Per Capita Income	\$14,672		\$20,846		\$26,728		\$29,321		42.1%	9.7%

*This Census 2010 data has not yet been released

Current year data is for the year **2011**, 5 year projected data is for the year **2016**. More About Our Data.
Demographic data ' 2011 by Experian/Applied Geographic Solutions.

Business List data ' 2011 by D&B^{fi}. All rights reserved. All D&B information is powered by DUNSRight™, D&B's Quality Process.

' 2011. DDR is brought to you by Alteryx, Inc.

Alteryx, DemographicsNow.com and the Alteryx and DemographicsNow.com logos are trademarks of Alteryx, Inc. All rights reserved.

Privacy Statement | License Agreement