



Date: 05/02/12

Current Geography Selection: (1 Selected) Counties: Beaufort County

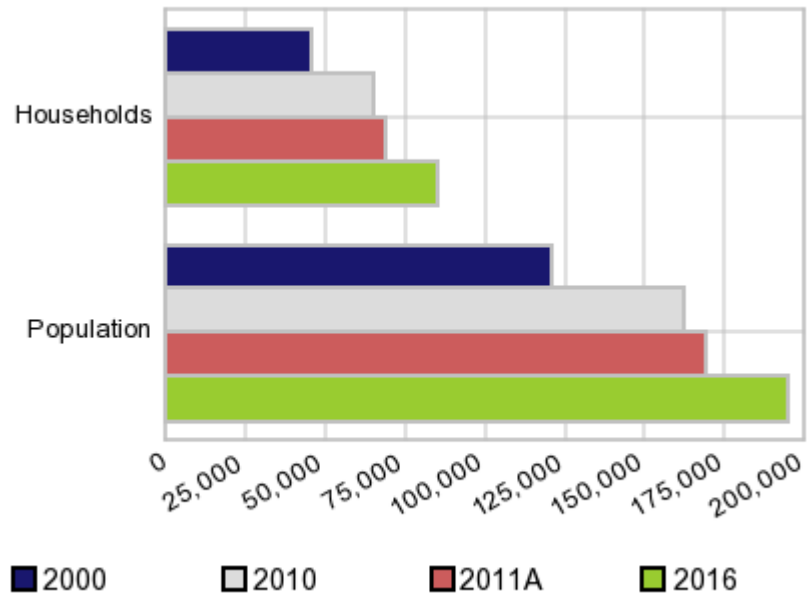
Executive Summary Report with Charts

Population Demographics:

The number of households in the study area in 2000 was **45,532** and changed to **64,945** in 2010, representing a change of **42.6%**. The household count in 2011A was **69,032** and the household projection for 2016 is **85,418**, a change of **23.7%**.

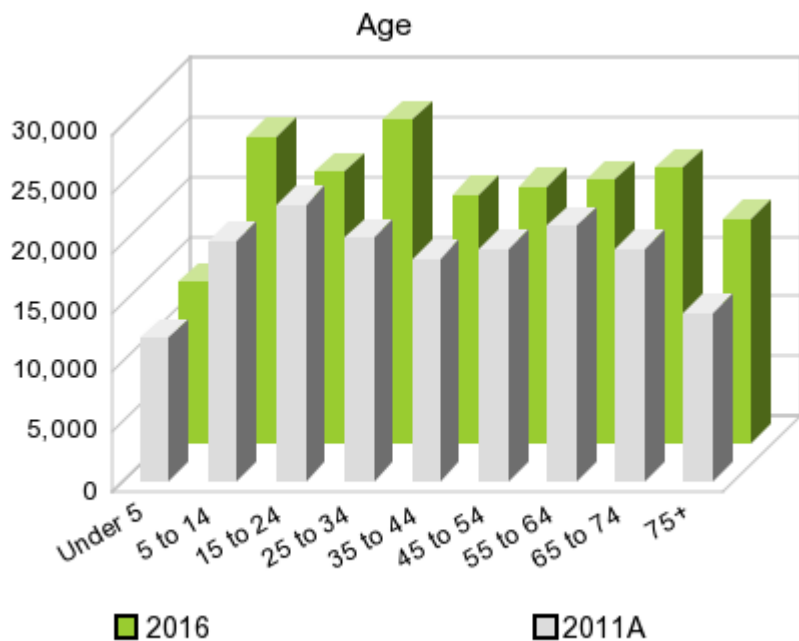
The population in the study area in 2000 was **120,937** and in 2010 it was **162,233**, roughly a **34.1%** change. The population in 2011A was **168,772** and the projection for 2016 is **194,950** representing a change of **15.5%**.

Population and Household Change



	2000 Census	2010 Census	2011A Estimate	2016 Projection	Percent Change	
					2000 to 2010	2011 to 2016
Total Population	120,937	162,233	168,772	194,950	34.1%	15.5%
Total Households	45,532	64,945	69,032	85,418	111.5%	23.7%

Population by Age



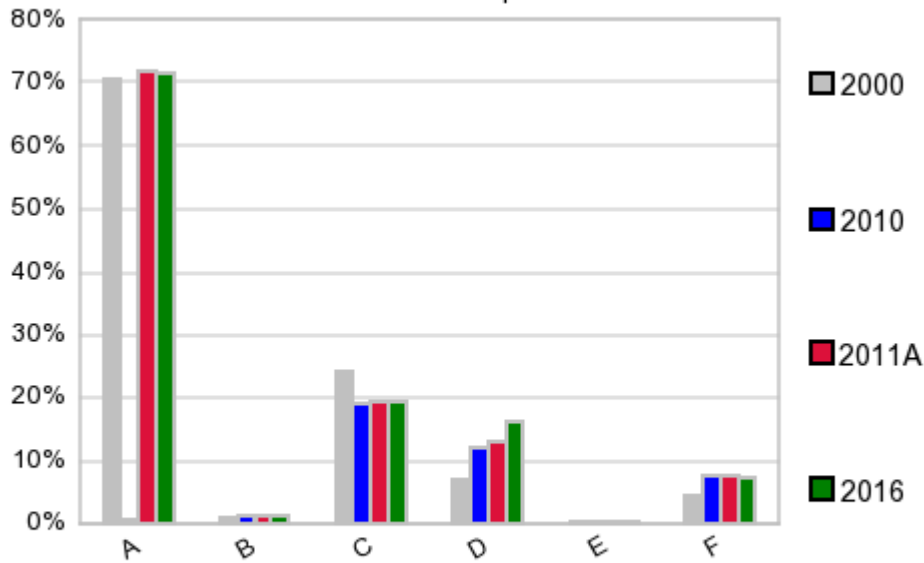
In 1990, the median age of the total population in the study area was **30**, and in 2000, it was **36**. The median age in 2011A is **40** and it is predicted to change in five years to **39** years. In 2011A, females represented **50.4%** of the population with a median age of **42** and males represented **49.6%** of the population with a median age of **37** years. In 2011A, the most prominent age group in this geography is **Age 55 to 64** years. The age group least represented in this geography is **15 to 19** years.

Age Groups*

	1990		2000		2011A		2016		Percent Change	
	Census	%	Census	%	Estimate	%	Projection	%	1990 to 2000	2011 to 2016
0 to 4	7,388	8.6%	8,110	6.7%	12,080	7.2%	13,498	6.9%	9.8%	11.7%
5 to 14	11,525	13.3%	15,780	13.0%	20,035	11.9%	25,614	13.1%	36.9%	27.8%
15 to 19	7,233	8.4%	8,722	7.2%	10,524	6.2%	10,793	5.5%	20.6%	2.6%
20 to 24	8,414	9.7%	10,002	8.3%	12,681	7.5%	11,920	6.1%	18.9%	-6.0%
25 to 34	15,999	18.5%	16,434	13.6%	20,510	12.2%	27,144	13.9%	2.7%	32.3%
35 to 44	11,100	12.8%	16,433	13.6%	18,584	11.0%	20,723	10.6%	48.0%	11.5%
45 to 54	6,754	7.8%	14,019	11.6%	19,413	11.5%	21,408	11.0%	107.6%	10.3%
55 to 64	7,368	8.5%	12,683	10.5%	21,405	12.7%	21,988	11.3%	72.1%	2.7%
65 to 74	7,282	8.4%	11,329	9.4%	19,477	11.5%	23,087	11.8%	55.6%	18.5%
75 +	3,384	3.9%	7,425	6.1%	14,044	8.3%	18,780	9.6%	119.4%	33.7%

Population by Race/Ethnicity

Race and Ethnicity Percent Composition



In 2011A, the predominant race/ethnicity category in this study area is **White**. The race & ethnicity category least represented in this geography is **American Indian, Alaska Native**.

A: White
 B: Asian Pac Islr
 C: Black
 D: Hispanic
 E: Amer Indian or Alaska Native
 F: Other or Multi Race

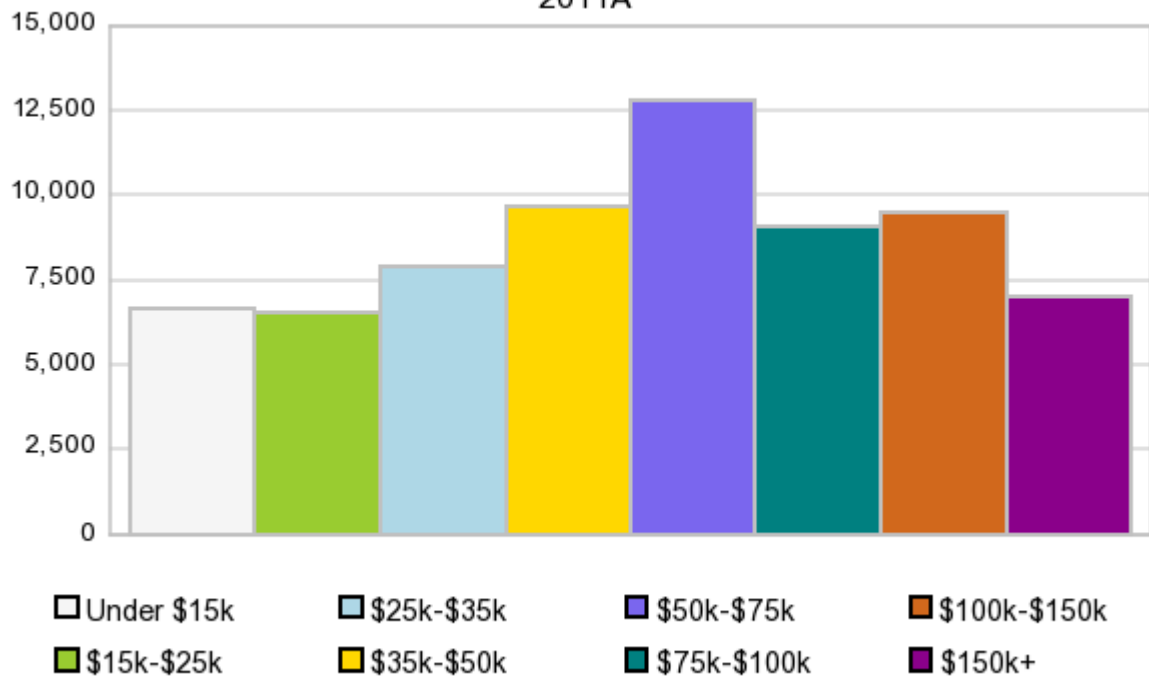
Race & Ethnicity

Race & Ethnicity	2000		2010		2011A		2016		Percent Change	
	Census	%	Census	%	Estimate	%	Projection	%	2000 to 2010	2011 to 2016
White	85,451	70.7%	116,606	71.9%	121,244	71.8%	139,826	71.7%	36.5%	15.3%
Black	29,005	24.0%	31,290	19.3%	32,639	19.3%	38,047	19.5%	7.9%	16.6%
American Indian or Alaska Native	321	0.3%	481	0.3%	501	0.3%	575	0.3%	49.8%	14.8%
Asian/Hawaiian/PI	1,016	0.8%	2,008	1.2%	2,080	1.2%	2,384	1.2%	97.6%	14.6%
Some Other Race	3,438	2.8%	8,515	5.2%	8,418	5.0%	9,623	4.9%	147.7%	14.3%
Two or More Races	1,706	1.4%	3,333	2.1%	3,886	2.3%	4,491	2.3%	95.4%	15.6%
Hispanic Ethnicity	8,208	6.8%	19,567	12.1%	21,905	13.0%	31,176	16.0%	138.4%	42.3%
Not Hispanic or Latino	112,729	93.2%	142,666	87.9%	146,874	87.0%	163,773	84.0%	26.6%	11.5%

Households by Income

Households by Income Group 2011A

In 2011A the predominant household income category in this study area is **\$50K - \$75K**, and the income group that is least represented in this geography is **\$15K - \$25K**.



HH Income Categories*

	1990 Census		2000 Census		2011A Estimate		2016 Projection		Percent Change	
	Count	%	Count	%	Count	%	Count	%	1990 to 2000	2011 to 2016
\$0 - \$15,000	6,787	22.1%	5,345	11.7%	6,663	9.7%	7,802	9.1%	-21.2%	17.1%
\$15,000 - \$24,999	5,458	17.8%	5,019	11.0%	6,513	9.4%	7,637	8.9%	-8.0%	17.3%
\$25,000 - \$34,999	5,043	16.4%	5,835	12.8%	7,900	11.4%	9,464	11.1%	15.7%	19.8%
\$35,000 - \$49,999	5,512	17.9%	7,932	17.4%	9,682	14.0%	10,896	12.8%	43.9%	12.5%
\$50,000 - \$74,999	4,494	14.6%	9,393	20.6%	12,781	18.5%	14,931	17.5%	109.0%	16.8%
\$75,000 - \$99,999	1,631	5.3%	4,923	10.8%	9,029	13.1%	11,929	14.0%	201.8%	32.1%
\$100,000 - \$149,999	1,029	3.4%	3,956	8.7%	9,505	13.8%	13,307	15.6%	284.5%	40.0%
\$150,000 +	728	2.4%	3,129	6.9%	6,971	10.1%	9,454	11.1%	329.8%	35.6%
Average Hhld Income	\$41,004		\$65,606		\$81,461		\$88,447		60.0%	8.6%
Median Hhld Income	\$30,657		\$47,309		\$56,621		\$60,136		54.3%	6.2%
Per Capita Income	\$15,299		\$24,700		\$34,602		\$40,096		61.4%	15.9%

*This Census 2010 data has not yet been released

Current year data is for the year **2011**, 5 year projected data is for the year **2016**. More About Our Data.
Demographic data © 2011 by Experian/Applied Geographic Solutions.

Business List data © 2011 by D&B®. All rights reserved. All D&B information is powered by DUNSRight™, D&B's Quality Process.

Alteryx, DemographicsNow.com and the Alteryx and DemographicsNow.com logos are trademarks of Alteryx, Inc.
All rights reserved.

Privacy Statement | License Agreement