



Date: 05/02/12

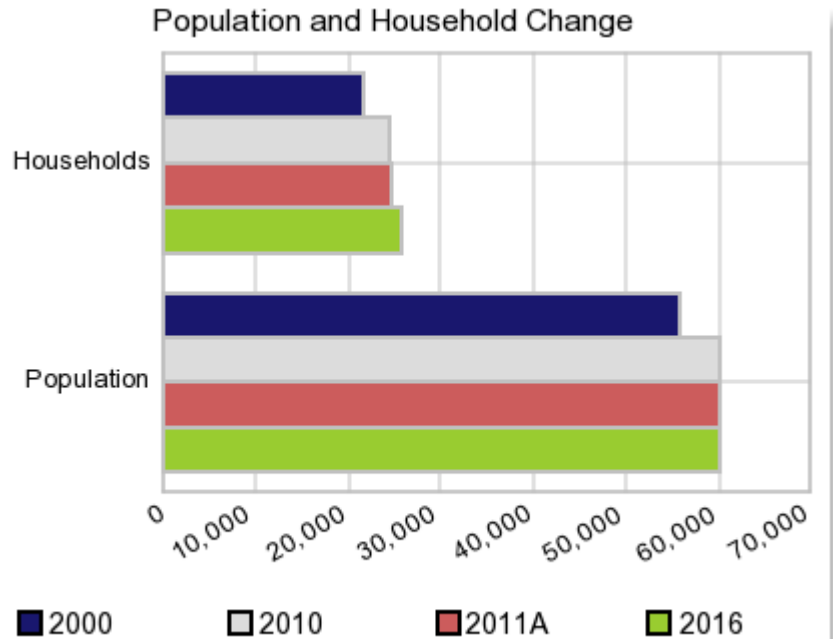
Current Geography Selection: (1 Selected) Counties: Georgetown County

Executive Summary Report with Charts

Population Demographics:

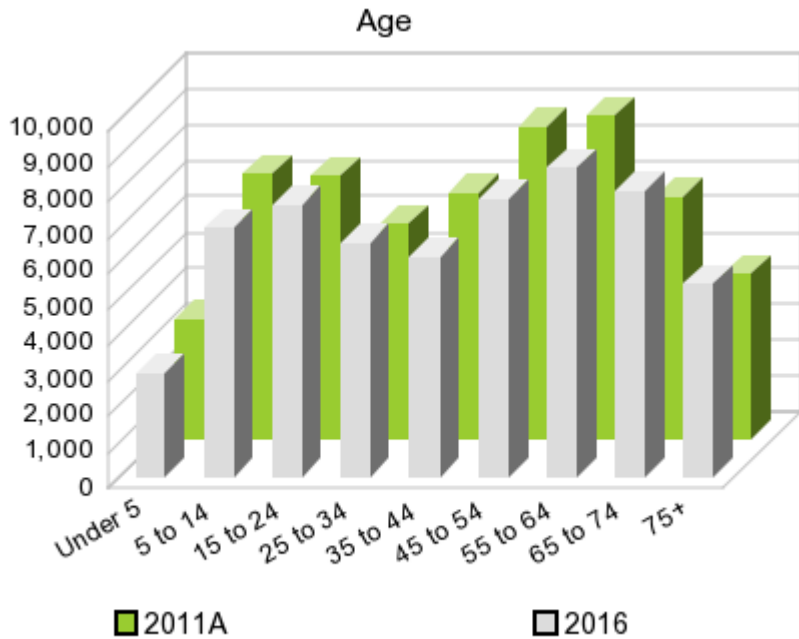
The number of households in the study area in 2000 was **21,659** and changed to **24,524** in 2010, representing a change of **13.2%**. The household count in 2011A was **24,753** and the household projection for 2016 is **25,674**, a change of **3.7%**.

The population in the study area in 2000 was **55,797** and in 2010 it was **60,158**, roughly a **7.8%** change. The population in 2011A was **60,118** and the projection for 2016 is **60,014** representing a change of **-0.2%**.



	2000 Census	2010 Census	2011A Estimate	2016 Projection	Percent Change	
					2000 to 2010	2011 to 2016
Total Population	55,797	60,158	60,118	60,014	7.8%	-0.2%
Total Households	21,659	24,524	24,753	25,674	50.7%	3.7%

Population by Age



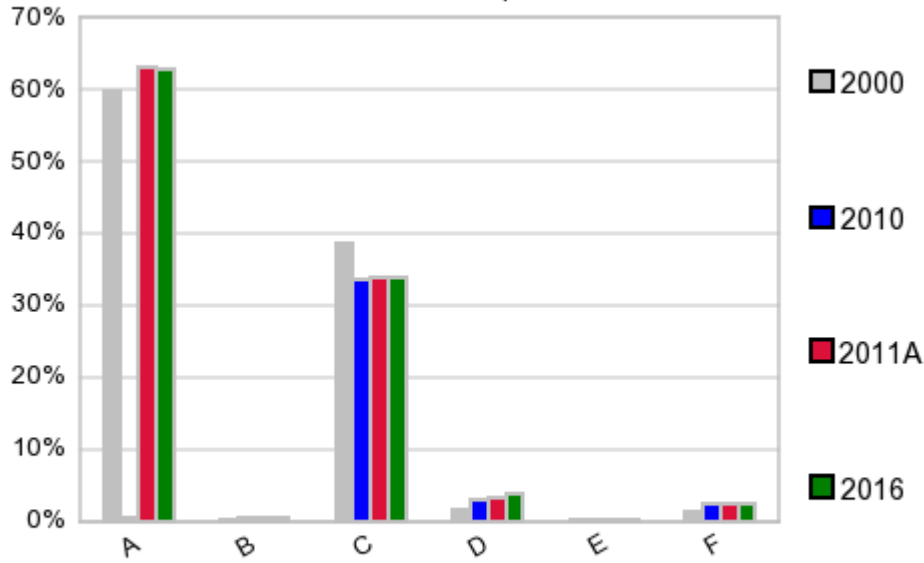
In 1990, the median age of the total population in the study area was **33**, and in 2000, it was **39**. The median age in 2011A is **44** and it is predicted to change in five years to **45** years. In 2011A, females represented **51.0%** of the population with a median age of **46** and males represented **49.0%** of the population with a median age of **41** years. In 2011A, the most prominent age group in this geography is **Age 55 to 64** years. The age group least represented in this geography is **0 to 4** years.

Age Groups*

	1990		2000		2011A		2016		Percent Change	
	Census	%	Census	%	Estimate	%	Projection	%	1990 to 2000	2011 to 2016
0 to 4	3,566	7.7%	3,477	6.2%	3,328	5.5%	2,926	4.9%	-2.5%	-12.1%
5 to 14	7,914	17.1%	8,102	14.5%	7,411	12.3%	6,976	11.6%	2.4%	-5.9%
15 to 19	3,702	8.0%	3,773	6.8%	3,839	6.4%	3,755	6.3%	1.9%	-2.2%
20 to 24	2,842	6.1%	3,004	5.4%	3,538	5.9%	3,843	6.4%	5.7%	8.6%
25 to 34	6,876	14.9%	6,473	11.6%	6,006	10.0%	6,566	10.9%	-5.9%	9.3%
35 to 44	6,799	14.7%	7,975	14.3%	6,890	11.5%	6,138	10.2%	17.3%	-10.9%
45 to 54	4,443	9.6%	8,113	14.5%	8,708	14.5%	7,759	12.9%	82.6%	-10.9%
55 to 64	4,211	9.1%	6,526	11.7%	9,017	15.0%	8,639	14.4%	55.0%	-4.2%
65 to 74	3,973	8.6%	4,878	8.7%	6,753	11.2%	7,976	13.3%	22.8%	18.1%
75 +	1,981	4.3%	3,476	6.2%	4,618	7.7%	5,422	9.0%	75.5%	17.4%

Population by Race/Ethnicity

Race and Ethnicity Percent Composition



In 2011A, the predominant race/ethnicity category in this study area is **White**. The race & ethnicity category least represented in this geography is **American Indian, Alaska Native**.

A: White
 B: Asian Pac Islr
 C: Black
 D: Hispanic
 E: Amer Indian or Alaska Native
 F: Other or Multi Race

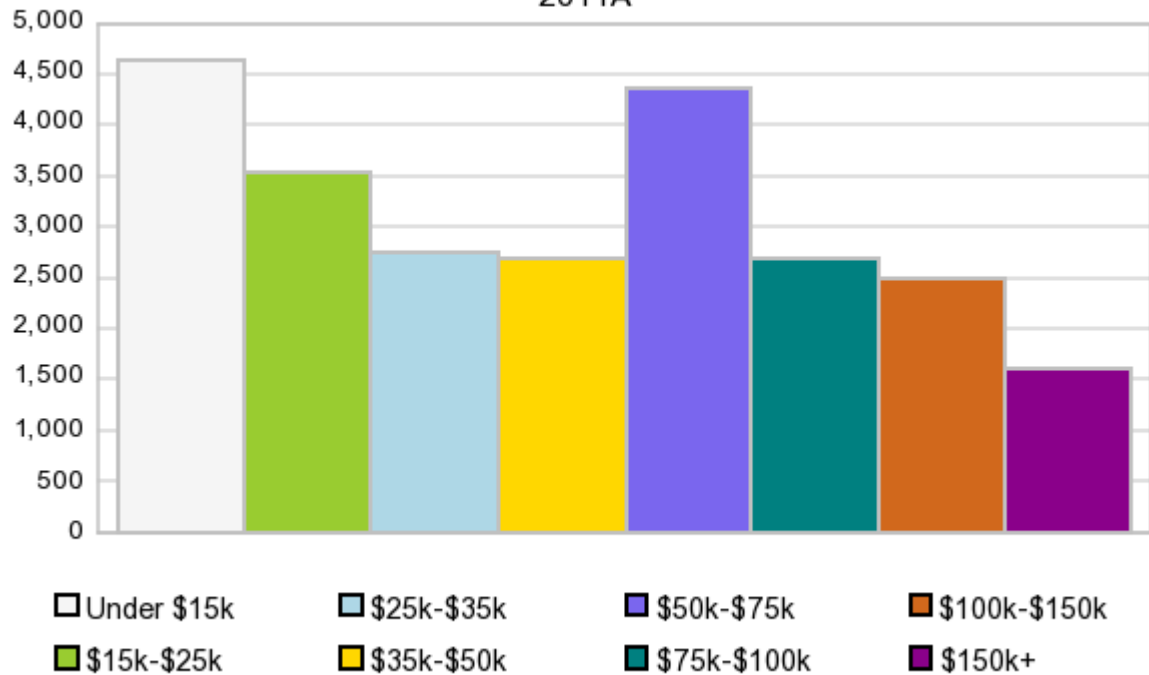
Race & Ethnicity

Race & Ethnicity	2000 Census		2010 Census		2011A Estimate		2016 Projection		Percent Change	
	Count	%	Count	%	Count	%	Count	%	2000 to 2010	2011 to 2016
White	33,307	59.7%	38,005	63.2%	37,943	63.1%	37,754	62.9%	14.1%	-0.5%
Black	21,541	38.6%	20,214	33.6%	20,245	33.7%	20,351	33.9%	-6.2%	0.5%
American Indian or Alaska Native	77	0.1%	136	0.2%	135	0.2%	133	0.2%	76.6%	-1.5%
Asian/Hawaiian/PI	147	0.3%	285	0.5%	282	0.5%	280	0.5%	93.9%	-0.7%
Some Other Race	453	0.8%	969	1.6%	804	1.3%	787	1.3%	113.9%	-2.1%
Two or More Races	272	0.5%	549	0.9%	708	1.2%	709	1.2%	101.8%	0.1%
Hispanic Ethnicity	919	1.7%	1,867	3.1%	1,936	3.2%	2,220	3.7%	103.2%	14.7%
Not Hispanic or Latino	54,878	98.4%	58,291	96.9%	58,184	96.8%	57,800	96.3%	6.2%	-0.7%

Households by Income

Households by Income Group 2011A

In 2011A the predominant household income category in this study area is **\$0 - \$15K**, and the income group that is least represented in this geography is **\$150K +**.



HH Income Categories*

	1990 Census		2000 Census		2011A Estimate		2016 Projection		Percent Change	
		%		%		%		%	1990 to 2000	2011 to 2016
\$0 - \$15,000	5,254	32.3%	4,415	20.4%	4,628	18.7%	4,575	17.8%	-16.0%	-1.1%
\$15,000 - \$24,999	3,154	19.4%	3,128	14.4%	3,532	14.3%	3,640	14.2%	-0.8%	3.1%
\$25,000 - \$34,999	2,604	16.0%	3,201	14.8%	2,741	11.1%	2,472	9.6%	22.9%	-9.8%
\$35,000 - \$49,999	2,606	16.0%	3,430	15.8%	2,683	10.8%	2,356	9.2%	31.6%	-12.2%
\$50,000 - \$74,999	1,717	10.6%	3,864	17.8%	4,376	17.7%	4,440	17.3%	125.0%	1.5%
\$75,000 - \$99,999	472	2.9%	1,731	8.0%	2,695	10.9%	3,091	12.0%	266.7%	14.7%
\$100,000 - \$149,999	283	1.7%	1,039	4.8%	2,500	10.1%	3,181	12.4%	267.1%	27.2%
\$150,000 +	186	1.1%	851	3.9%	1,595	6.4%	1,918	7.5%	357.5%	20.3%
Average Hhld Income	\$31,552		\$50,696		\$64,232		\$73,321		60.7%	14.2%
Median Hhld Income	\$24,012		\$35,332		\$43,382		\$48,754		47.1%	12.4%
Per Capita Income	\$11,120		\$19,679		\$26,734		\$31,715		77.0%	18.6%

*This Census 2010 data has not yet been released

Current year data is for the year **2011**, 5 year projected data is for the year **2016**. More About Our Data.
Demographic data © 2011 by Experian/Applied Geographic Solutions.

Business List data © 2011 by D&B®. All rights reserved. All D&B information is powered by DUNSRight™, D&B's Quality Process.

Alteryx, DemographicsNow.com and the Alteryx and DemographicsNow.com logos are trademarks of Alteryx, Inc.
All rights reserved.

Privacy Statement | License Agreement