



Date: 05/03/12

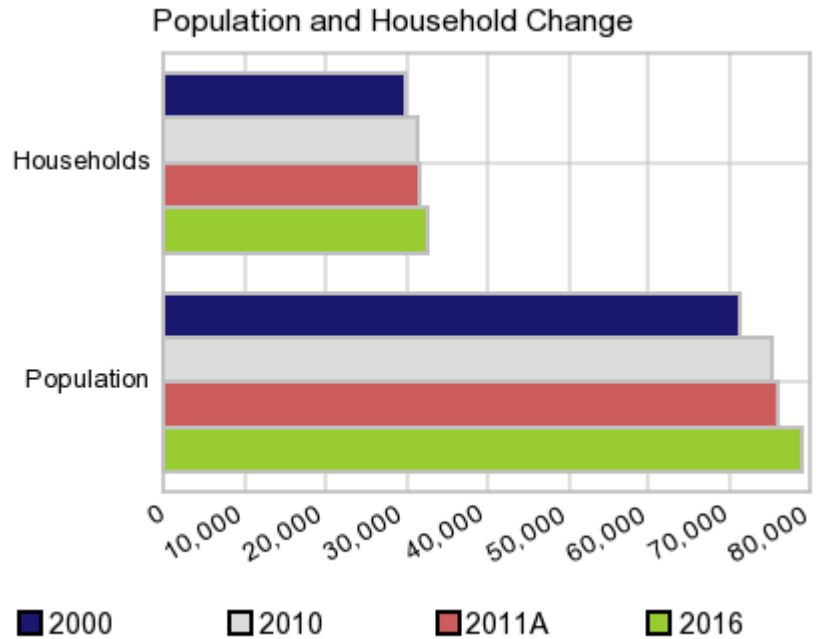
Current Geography Selection: (1 Selected) Counties: Anderson County

Executive Summary Report with Charts

Population Demographics:

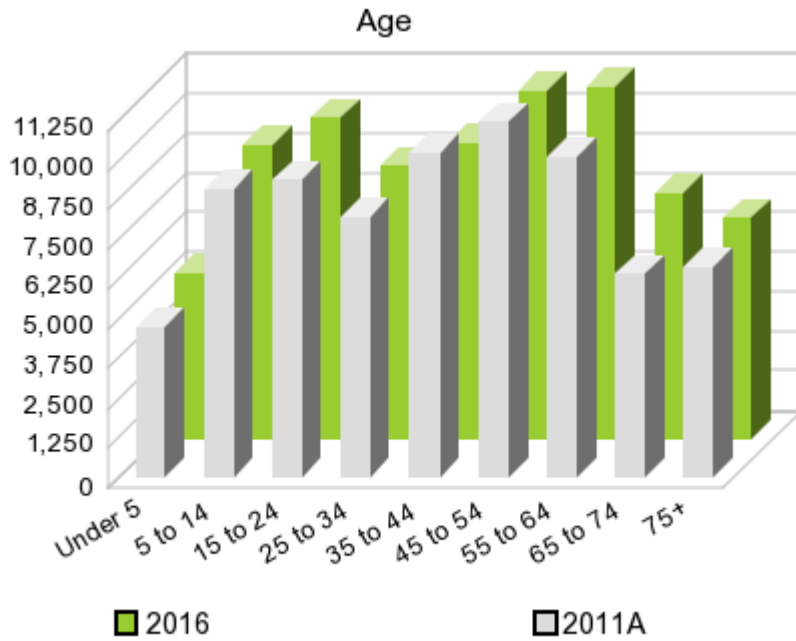
The number of households in the study area in 2000 was **29,780** and changed to **31,253** in 2010, representing a change of **4.9%**. The household count in 2011A was **31,496** and the household projection for 2016 is **32,463**, a change of **3.1%**.

The population in the study area in 2000 was **71,330** and in 2010 it was **75,129**, roughly a **5.3%** change. The population in 2011A was **75,920** and the projection for 2016 is **79,094** representing a change of **4.2%**.



	2000 Census	2010 Census	2011A Estimate	2016 Projection	Percent Change	
					2000 to 2010	2011 to 2016
Total Population	71,330	75,129	75,920	79,094	5.3%	4.2%
Total Households	29,780	31,253	31,496	32,463	14.1%	3.1%

Population by Age



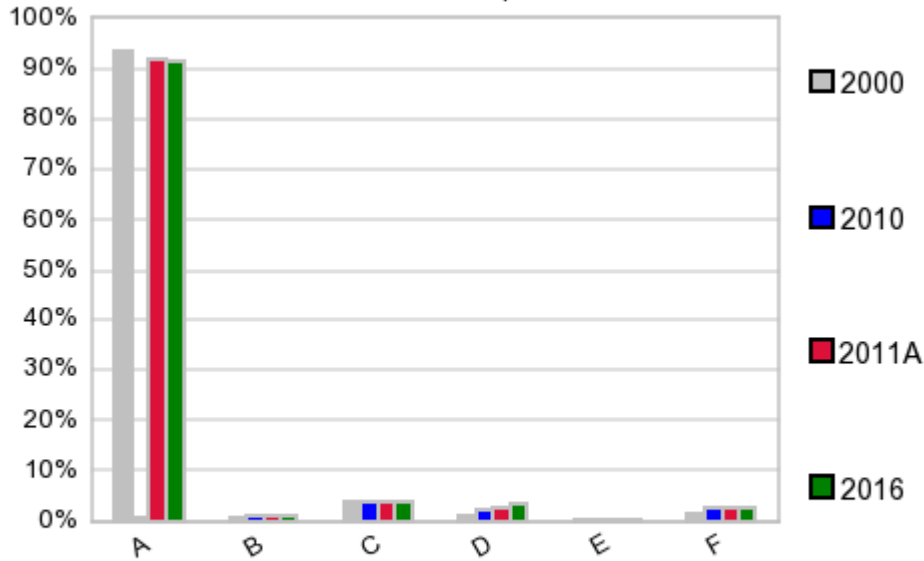
In 1990, the median age of the total population in the study area was **37**, and in 2000, it was **40**. The median age in 2011A is **42** and it is predicted to change in five years to **42** years. In 2011A, females represented **51.5%** of the population with a median age of **43** and males represented **48.5%** of the population with a median age of **40** years. In 2011A, the most prominent age group in this geography is **Age 45 to 54** years. The age group least represented in this geography is **18 to 24** years.

Age Groups*

	1990		2000		2011A		2016		Percent Change	
	Census	%	Census	%	Estimate	%	Projection	%	1990 to 2000	2011 to 2016
0 to 4	4,209	6.2%	3,976	5.6%	4,764	6.3%	5,241	6.6%	-5.5%	10.0%
5 to 14	9,301	13.6%	9,603	13.5%	9,088	12.0%	9,256	11.7%	3.2%	1.8%
15 to 19	4,634	6.8%	4,614	6.5%	5,021	6.6%	4,938	6.2%	-0.4%	-1.7%
20 to 24	4,110	6.0%	3,668	5.1%	4,322	5.7%	5,143	6.5%	-10.8%	19.0%
25 to 34	10,249	15.0%	8,607	12.1%	8,219	10.8%	8,568	10.8%	-16.0%	4.2%
35 to 44	10,462	15.3%	10,867	15.2%	10,217	13.5%	9,282	11.7%	3.9%	-9.2%
45 to 54	7,809	11.4%	10,630	14.9%	11,198	14.8%	10,952	13.8%	36.1%	-2.2%
55 to 64	7,004	10.3%	7,541	10.6%	10,114	13.3%	11,081	14.0%	7.7%	9.6%
65 to 74	6,430	9.4%	6,005	8.4%	6,389	8.4%	7,752	9.8%	-6.6%	21.3%
75 +	4,058	5.9%	5,819	8.2%	6,621	8.7%	6,906	8.7%	43.4%	4.3%

Population by Race/Ethnicity

Race and Ethnicity Percent Composition



In 2011A, the predominant race/ethnicity category in this study area is **White**. The race & ethnicity category least represented in this geography is **American Indian, Alaska Native**.

A: White
 B: Asian Pac Islr
 C: Black
 D: Hispanic
 E: Amer Indian or Alaska Native
 F: Other or Multi Race

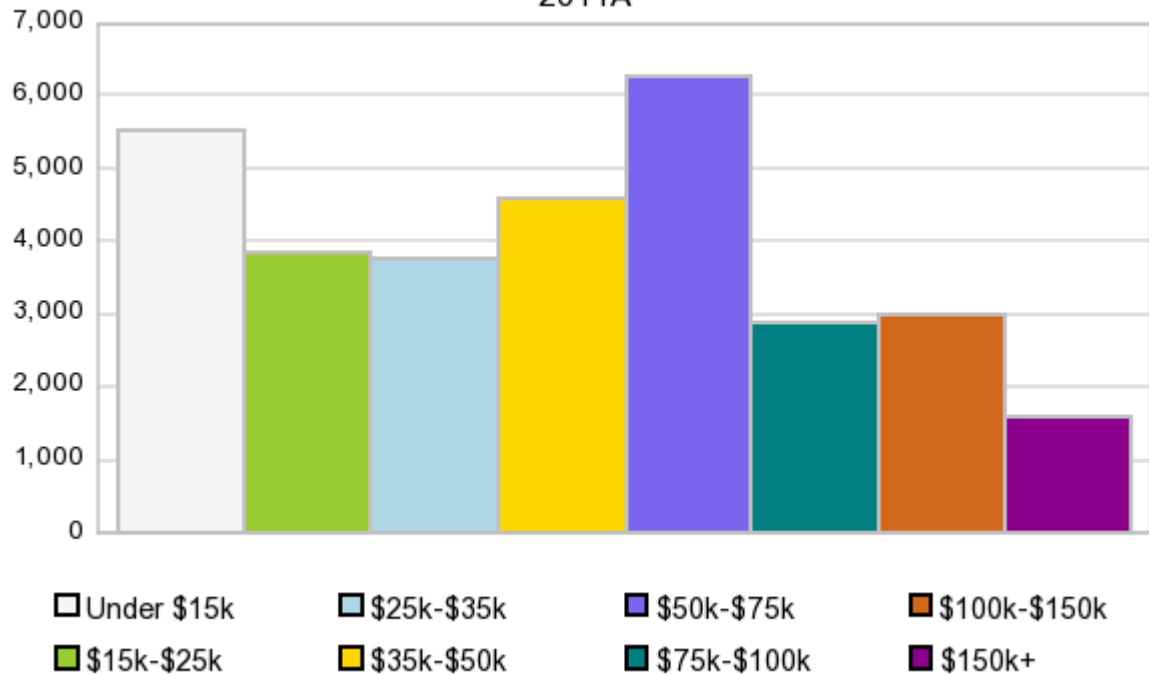
Race & Ethnicity

	2000 Census		2010 Census		2011A Estimate		2016 Projection		Percent Change	
		%		%		%		%	2000 to 2010	2011 to 2016
White	66,593	93.4%	69,065	91.9%	69,753	91.9%	72,504	91.7%	3.7%	3.9%
Black	2,766	3.9%	2,847	3.8%	2,917	3.8%	3,186	4.0%	2.9%	9.2%
American Indian or Alaska Native	226	0.3%	239	0.3%	243	0.3%	254	0.3%	5.8%	4.5%
Asian/Hawaiian/PI	602	0.8%	821	1.1%	829	1.1%	866	1.1%	36.4%	4.5%
Some Other Race	274	0.4%	699	0.9%	543	0.7%	584	0.7%	155.1%	7.6%
Two or More Races	869	1.2%	1,458	1.9%	1,642	2.2%	1,705	2.2%	67.8%	3.8%
Hispanic Ethnicity	787	1.1%	1,768	2.4%	1,983	2.6%	2,832	3.6%	124.7%	42.8%
Not Hispanic or Latino	70,543	98.9%	73,361	97.6%	73,939	97.4%	76,261	96.4%	4.0%	3.1%

Households by Income

Households by Income Group 2011A

In 2011A the predominant household income category in this study area is **\$50K - \$75K**, and the income group that is least represented in this geography is **\$150K +**.



HH Income Categories*

	1990 Census		2000 Census		2011A Estimate		2016 Projection		Percent Change	
		%		%		%		%	1990 to 2000	2011 to 2016
\$0 - \$15,000	7,923	28.9%	5,833	19.6%	5,539	17.6%	5,517	17.0%	-26.4%	-0.4%
\$15,000 - \$24,999	4,981	18.2%	4,396	14.8%	3,854	12.2%	3,678	11.3%	-11.7%	-4.6%
\$25,000 - \$34,999	4,646	17.0%	4,452	15.0%	3,764	12.0%	3,546	10.9%	-4.2%	-5.8%
\$35,000 - \$49,999	4,611	16.8%	5,289	17.8%	4,604	14.6%	4,383	13.5%	14.7%	-4.8%
\$50,000 - \$74,999	3,764	13.7%	5,310	17.8%	6,278	19.9%	6,699	20.6%	41.1%	6.7%
\$75,000 - \$99,999	936	3.4%	2,288	7.7%	2,893	9.2%	3,156	9.7%	144.4%	9.1%
\$100,000 - \$149,999	370	1.4%	1,628	5.5%	2,985	9.5%	3,552	10.9%	340.0%	19.0%
\$150,000 +	162	0.6%	584	2.0%	1,580	5.0%	1,932	6.0%	260.5%	22.3%
Average Hhld Income	\$32,217		\$44,996		\$56,914		\$62,334		39.7%	9.5%
Median Hhld Income	\$26,548		\$35,481		\$44,302		\$47,663		33.6%	7.6%
Per Capita Income	\$13,103		\$18,786		\$24,043		\$26,067		43.4%	8.4%

*This Census 2010 data has not yet been released

Current year data is for the year **2011**, 5 year projected data is for the year **2016**. More About Our Data.
Demographic data © 2011 by Experian/Applied Geographic Solutions.

Business List data © 2011 by D&B®. All rights reserved. All D&B information is powered by DUNSRight™, D&B's Quality Process.

Alteryx, DemographicsNow.com and the Alteryx and DemographicsNow.com logos are trademarks of Alteryx, Inc.
All rights reserved.

Privacy Statement | License Agreement