



Date: 05/03/12

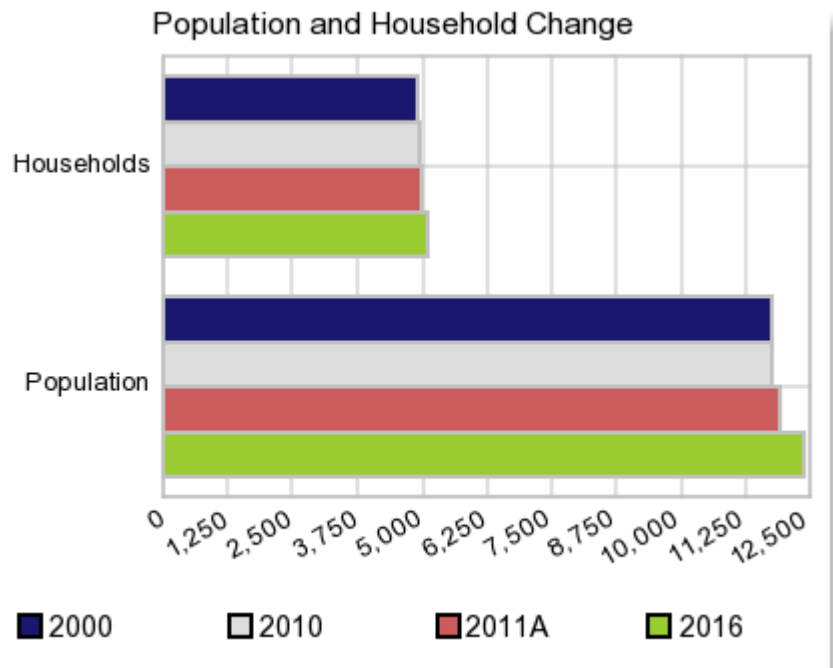
Current Geography Selection: (1 Selected) Counties: Decatur County

Executive Summary Report with Charts

Population Demographics:

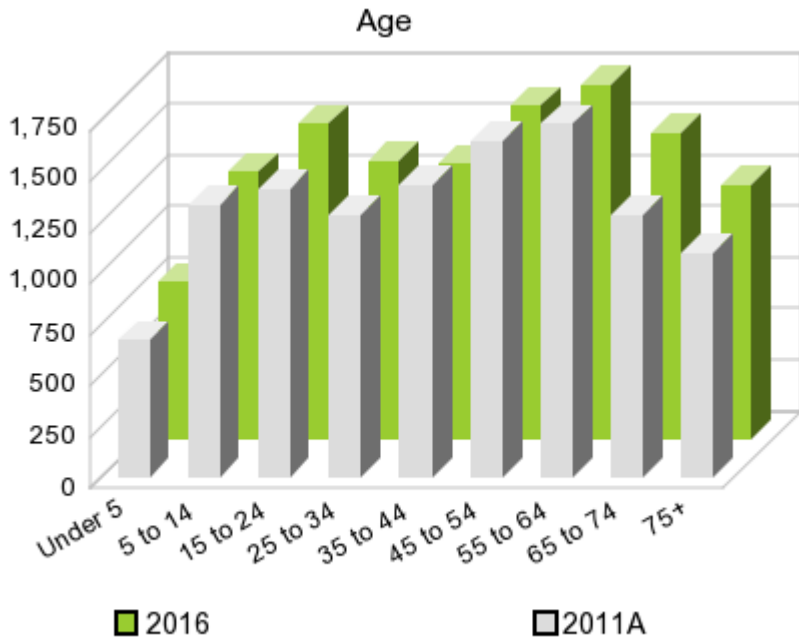
The number of households in the study area in 2000 was **4,908** and changed to **4,927** in 2010, representing a change of **0.4%**. The household count in 2011A was **4,956** and the household projection for 2016 is **5,071**, a change of **2.3%**.

The population in the study area in 2000 was **11,731** and in 2010 it was **11,757**, roughly a **0.2%** change. The population in 2011A was **11,887** and the projection for 2016 is **12,402** representing a change of **4.3%**.



	2000 Census	2010 Census	2011A Estimate	2016 Projection	Percent Change	
					2000 to 2010	2011 to 2016
Total Population	11,731	11,757	11,887	12,402	0.2%	4.3%
Total Households	4,908	4,927	4,956	5,071	16.9%	2.3%

Population by Age



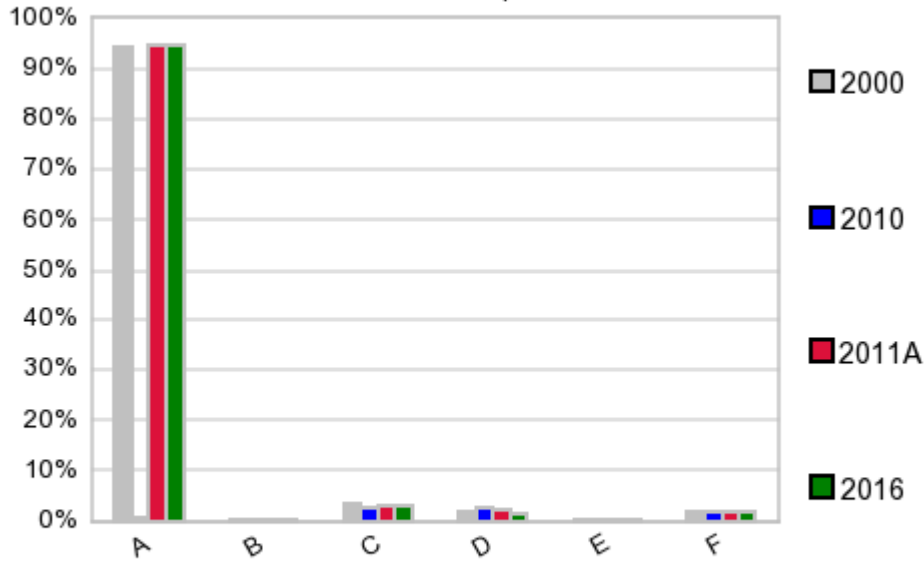
In 1990, the median age of the total population in the study area was **39**, and in 2000, it was **41**. The median age in 2011A is **44** and it is predicted to change in five years to **44** years. In 2011A, females represented **52.2%** of the population with a median age of **45** and males represented **47.8%** of the population with a median age of **42** years. In 2011A, the most prominent age group in this geography is **Age 55 to 64** years. The age group least represented in this geography is **0 to 4** years.

Age Groups*

	1990 Census		2000 Census		2011A Estimate		2016 Projection		Percent Change	
		%		%		%		%	1990 to 2000	2011 to 2016
0 to 4	544	5.2%	661	5.6%	671	5.6%	765	6.2%	21.5%	14.0%
5 to 14	1,400	13.4%	1,422	12.1%	1,332	11.2%	1,305	10.5%	1.6%	-2.0%
15 to 19	719	6.9%	720	6.1%	733	6.2%	778	6.3%	0.1%	6.1%
20 to 24	667	6.4%	669	5.7%	675	5.7%	760	6.1%	0.3%	12.6%
25 to 34	1,388	13.3%	1,414	12.1%	1,288	10.8%	1,365	11.0%	1.9%	6.0%
35 to 44	1,414	13.5%	1,624	13.8%	1,424	12.0%	1,343	10.8%	14.9%	-5.7%
45 to 54	1,251	11.9%	1,628	13.9%	1,649	13.9%	1,627	13.1%	30.1%	-1.3%
55 to 64	1,114	10.6%	1,462	12.5%	1,729	14.5%	1,730	14.0%	31.2%	0.1%
65 to 74	1,090	10.4%	1,124	9.6%	1,283	10.8%	1,491	12.0%	3.1%	16.2%
75 +	889	8.5%	1,007	8.6%	1,095	9.2%	1,239	10.0%	13.3%	13.2%

Population by Race/Ethnicity

Race and Ethnicity Percent Composition



In 2011A, the predominant race/ethnicity category in this study area is **White**. The race & ethnicity category least represented in this geography is **American Indian, Alaska Native**.

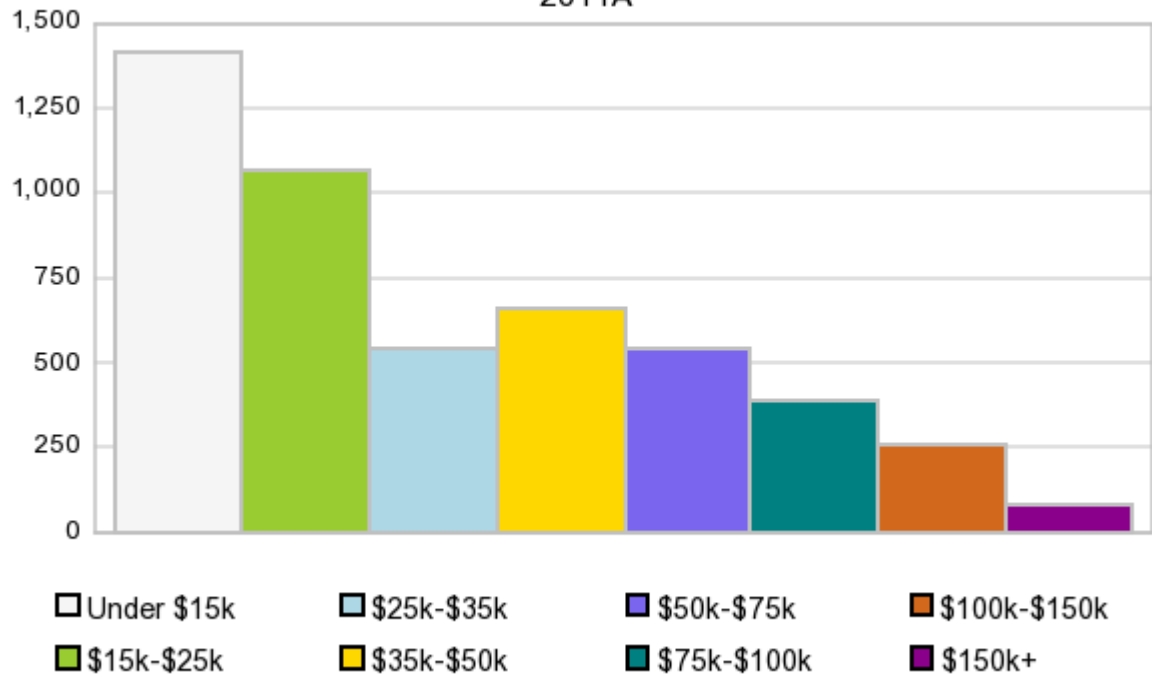
A: White
 B: Asian Pac Islr
 C: Black
 D: Hispanic
 E: Amer Indian or Alaska Native
 F: Other or Multi Race

Race & Ethnicity	2000 Census		2010 Census		2011A Estimate		2016 Projection		Percent Change	
	Count	%	Count	%	Count	%	Count	%	2000 to 2010	2011 to 2016
White	11,041	94.1%	11,139	94.7%	11,255	94.7%	11,719	94.5%	0.9%	4.1%
Black	407	3.5%	338	2.9%	350	2.9%	383	3.1%	-17.0%	9.4%
American Indian or Alaska Native	27	0.2%	26	0.2%	26	0.2%	27	0.2%	-3.7%	3.8%
Asian/Hawaiian/PI	26	0.2%	31	0.3%	30	0.3%	34	0.3%	19.2%	13.3%
Some Other Race	141	1.2%	78	0.7%	123	1.0%	132	1.1%	-44.7%	7.3%
Two or More Races	89	0.8%	145	1.2%	103	0.9%	108	0.9%	62.9%	4.9%
Hispanic Ethnicity	229	2.0%	308	2.6%	277	2.3%	181	1.5%	34.5%	-34.7%
Not Hispanic or Latino	11,502	98.1%	11,449	97.4%	11,611	97.7%	12,225	98.6%	-0.5%	5.3%

Households by Income

Households by Income Group 2011A

In 2011A the predominant household income category in this study area is **\$0 - \$15K**, and the income group that is least represented in this geography is **\$150K +**.



HH Income Categories*

	1990 Census		2000 Census		2011A Estimate		2016 Projection		Percent Change	
		%		%		%		%	1990 to 2000	2011 to 2016
\$0 - \$15,000	1,809	42.9%	1,313	26.8%	1,414	28.5%	1,445	28.5%	-27.4%	2.2%
\$15,000 - \$24,999	987	23.4%	843	17.2%	1,064	21.5%	1,156	22.8%	-14.6%	8.6%
\$25,000 - \$34,999	649	15.4%	777	15.8%	543	11.0%	487	9.6%	19.7%	-10.3%
\$35,000 - \$49,999	436	10.3%	862	17.6%	660	13.3%	588	11.6%	97.7%	-10.9%
\$50,000 - \$74,999	254	6.0%	695	14.2%	545	11.0%	515	10.2%	173.6%	-5.5%
\$75,000 - \$99,999	55	1.3%	219	4.5%	389	7.9%	465	9.2%	298.2%	19.5%
\$100,000 - \$149,999	22	0.5%	110	2.2%	256	5.2%	318	6.3%	400.0%	24.2%
\$150,000 +	7	0.2%	89	1.8%	81	1.6%	94	1.9%	1,171.4%	16.1%
Average Hhld Income	\$22,975		\$40,354		\$39,208		\$38,265		75.6%	-2.4%
Median Hhld Income	\$18,013		\$28,408		\$24,973		\$24,196		57.7%	-3.1%
Per Capita Income	\$9,309		\$16,883		\$16,736		\$16,081		81.4%	-3.9%

*This Census 2010 data has not yet been released

Current year data is for the year **2011**, 5 year projected data is for the year **2016**. More About Our Data.
Demographic data ' 2011 by Experian/Applied Geographic Solutions.

Business List data ' 2011 by D&B^{fi}. All rights reserved. All D&B information is powered by DUNSRight™, D&B's Quality Process.

' 2011. DDR is brought to you by Alteryx, Inc.

Alteryx, DemographicsNow.com and the Alteryx and DemographicsNow.com logos are trademarks of Alteryx, Inc. All rights reserved.

Privacy Statement | License Agreement