



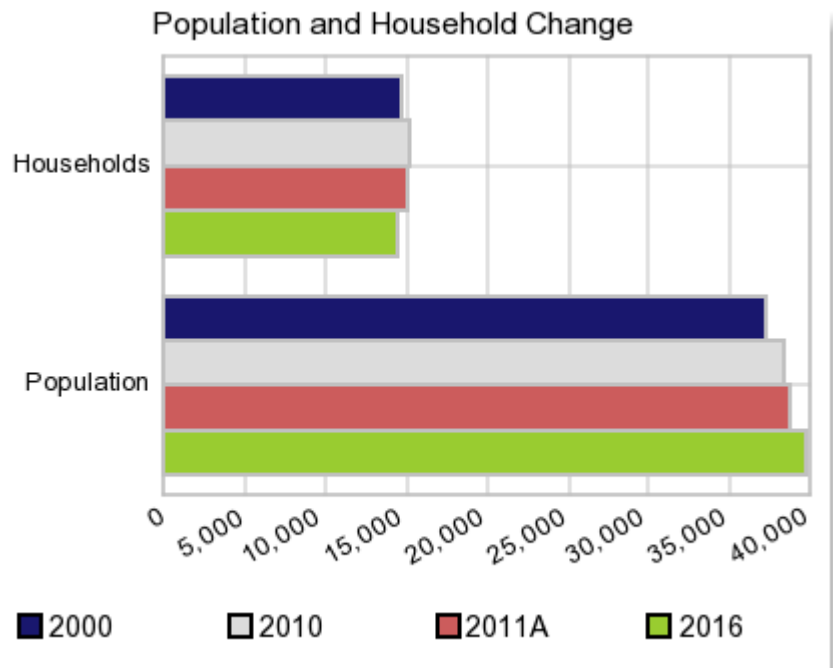
Date: 05/03/12  
 Current Geography Selection: (1 Selected) Counties: Dyer County

## Executive Summary Report with Charts

### Population Demographics:

The number of households in the study area in 2000 was **14,751** and changed to **15,183** in 2010, representing a change of **2.9%**. The household count in 2011A was **15,029** and the household projection for 2016 is **14,427**, a change of **-4.0%**.

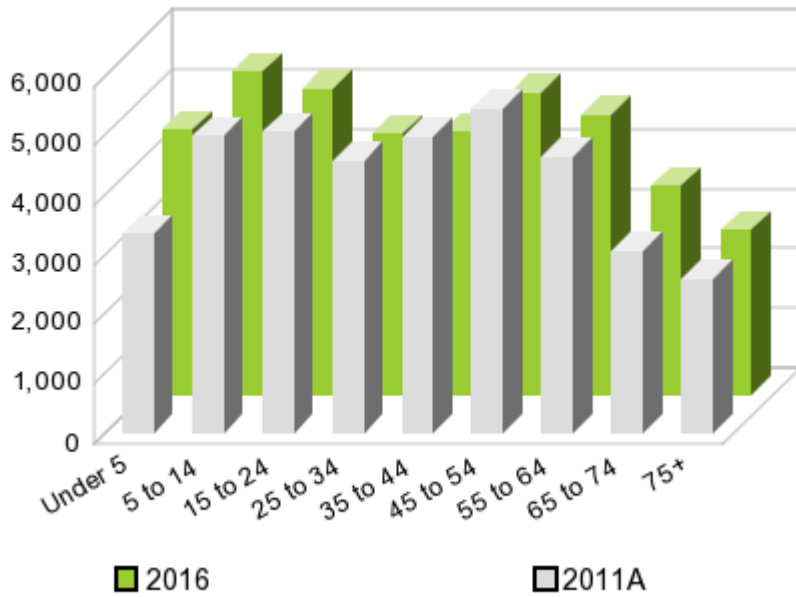
The population in the study area in 2000 was **37,279** and in 2010 it was **38,335**, roughly a **2.8%** change. The population in 2011A was **38,624** and the projection for 2016 is **39,782** representing a change of **3.0%**.



	2000 Census	2010 Census	2011A Estimate	2016 Projection	Percent Change	
					2000 to 2010	2011 to 2016
Total Population	37,279	38,335	38,624	39,782	2.8%	3.0%
Total Households	14,751	15,183	15,029	14,427	11.5%	-4.0%

### Population by Age

### Age



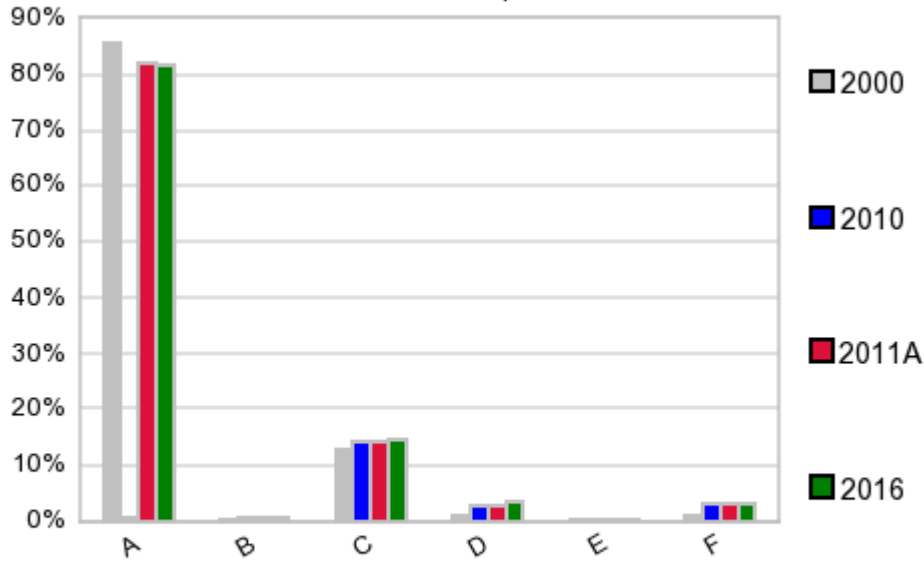
In 1990, the median age of the total population in the study area was **34**, and in 2000, it was **37**. The median age in 2011A is **38** and it is predicted to change in five years to **36** years. In 2011A, females represented **51.8%** of the population with a median age of **40** and males represented **48.2%** of the population with a median age of **36** years. In 2011A, the most prominent age group in this geography is **Age 45 to 54** years. The age group least represented in this geography is **18 to 24** years.

### Age Groups\*

	1990 Census		2000 Census		2011A Estimate		2016 Projection		Percent Change	
		%		%		%		%	1990 to 2000	2011 to 2016
0 to 4	2,326	6.7%	2,478	6.7%	3,336	8.6%	4,431	11.1%	6.5%	32.8%
5 to 14	5,058	14.5%	5,461	14.7%	4,979	12.9%	5,401	13.6%	8.0%	8.5%
15 to 19	2,579	7.4%	2,615	7.0%	2,726	7.1%	2,540	6.4%	1.4%	-6.8%
20 to 24	2,394	6.9%	2,289	6.1%	2,325	6.0%	2,589	6.5%	-4.4%	11.4%
25 to 34	5,399	15.5%	4,943	13.3%	4,586	11.9%	4,385	11.0%	-8.4%	-4.4%
35 to 44	5,074	14.6%	5,725	15.4%	4,949	12.8%	4,425	11.1%	12.8%	-10.6%
45 to 54	3,799	10.9%	5,171	13.9%	5,447	14.1%	5,073	12.8%	36.1%	-6.9%
55 to 64	3,011	8.6%	3,596	9.6%	4,654	12.1%	4,704	11.8%	19.4%	1.1%
65 to 74	2,804	8.0%	2,560	6.9%	3,040	7.9%	3,509	8.8%	-8.7%	15.4%
75 +	2,404	6.9%	2,441	6.5%	2,602	6.7%	2,745	6.9%	1.5%	5.5%

### Population by Race/Ethnicity

### Race and Ethnicity Percent Composition



In 2011A, the predominant race/ethnicity category in this study area is **White**. The race & ethnicity category least represented in this geography is **American Indian, Alaska Native**.

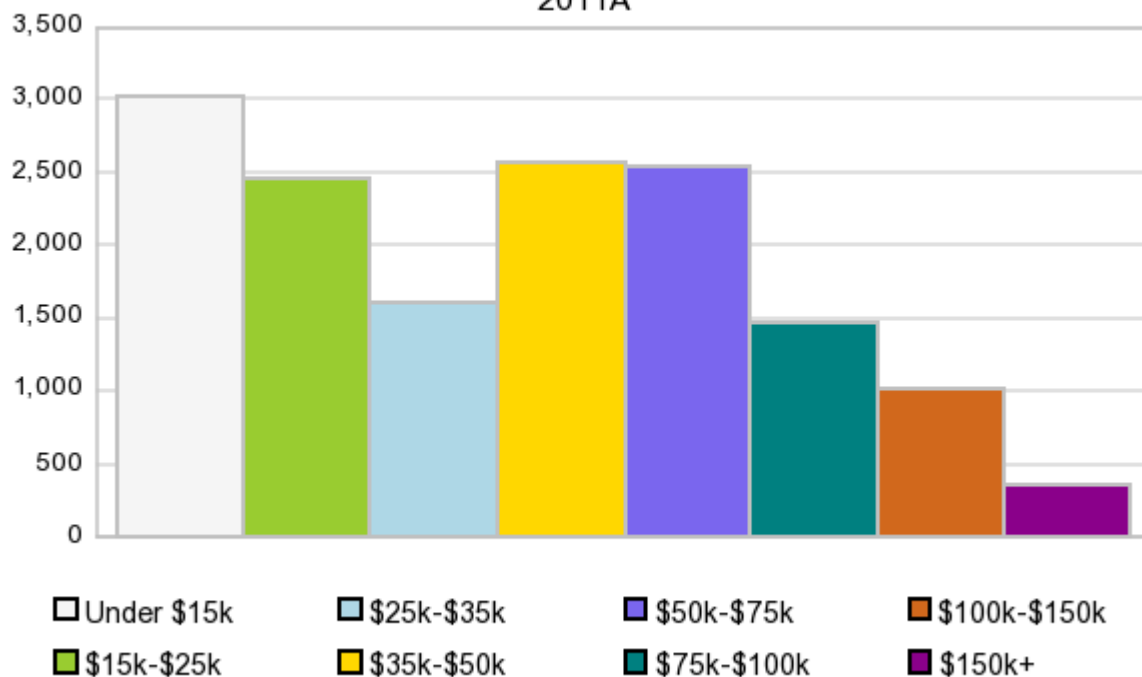
A: White  
 B: Asian Pac Islr  
 C: Black  
 D: Hispanic  
 E: Amer Indian or Alaska Native  
 F: Other or Multi Race

Race & Ethnicity	2000		2010		2011A		2016		Percent Change	
	Census	%	Census	%	Estimate	%	Projection	%	2000 to 2010	2011 to 2016
White	31,835	85.4%	31,432	82.0%	31,643	81.9%	32,483	81.7%	-1.3%	2.7%
Black	4,795	12.9%	5,477	14.3%	5,544	14.4%	5,812	14.6%	14.2%	4.8%
American Indian or Alaska Native	82	0.2%	82	0.2%	84	0.2%	87	0.2%	0.0%	3.6%
Asian/Hawaiian/PI	133	0.4%	202	0.5%	204	0.5%	211	0.5%	51.9%	3.4%
Some Other Race	160	0.4%	455	1.2%	438	1.1%	446	1.1%	184.4%	1.8%
Two or More Races	274	0.7%	687	1.8%	715	1.9%	744	1.9%	150.7%	4.1%
Hispanic Ethnicity	434	1.2%	1,002	2.6%	1,087	2.8%	1,422	3.6%	130.9%	30.8%
Not Hispanic or Latino	36,845	98.8%	37,333	97.4%	37,539	97.2%	38,361	96.4%	1.3%	2.2%

### Households by Income

## Households by Income Group 2011A

In 2011A the predominant household income category in this study area is **\$0 - \$15K**, and the income group that is least represented in this geography is **\$150K +**.



### HH Income Categories\*

	1990 Census		2000 Census		2011A Estimate		2016 Projection		Percent Change	
		%		%		%		%	1990 to 2000	2011 to 2016
\$0 - \$15,000	4,762	35.0%	3,407	23.1%	3,022	20.1%	2,817	19.5%	-28.5%	-6.8%
\$15,000 - \$24,999	2,677	19.7%	2,304	15.6%	2,461	16.4%	2,379	16.5%	-13.9%	-3.3%
\$25,000 - \$34,999	2,214	16.3%	2,066	14.0%	1,608	10.7%	1,378	9.6%	-6.7%	-14.3%
\$35,000 - \$49,999	2,152	15.8%	2,727	18.5%	2,571	17.1%	2,355	16.3%	26.7%	-8.4%
\$50,000 - \$74,999	1,251	9.2%	2,568	17.4%	2,541	16.9%	2,384	16.5%	105.3%	-6.2%
\$75,000 - \$99,999	246	1.8%	949	6.4%	1,472	9.8%	1,587	11.0%	285.8%	7.8%
\$100,000 - \$149,999	189	1.4%	487	3.3%	1,016	6.8%	1,169	8.1%	157.7%	15.1%
\$150,000 +	110	0.8%	243	1.6%	341	2.3%	365	2.5%	120.9%	7.0%
Average Hhld Income	\$28,637		\$40,996		\$47,575		\$50,120		43.2%	5.4%
Median Hhld Income	\$22,155		\$32,921		\$37,268		\$38,749		48.6%	4.0%
Per Capita Income	\$11,240		\$16,222		\$18,814		\$18,517		44.3%	-1.6%

\*This Census 2010 data has not yet been released

Current year data is for the year **2011**, 5 year projected data is for the year **2016**. More About Our Data.  
Demographic data ' 2011 by Experian/Applied Geographic Solutions.

Business List data ' 2011 by D&B<sup>fi</sup>. All rights reserved. All D&B information is powered by DUNSRight™, D&B's Quality Process.

**' 2011. DDR is brought to you by Alteryx, Inc.**

Alteryx, DemographicsNow.com and the Alteryx and DemographicsNow.com logos are trademarks of Alteryx, Inc. All rights reserved.

Privacy Statement | License Agreement