



Date: 05/03/12

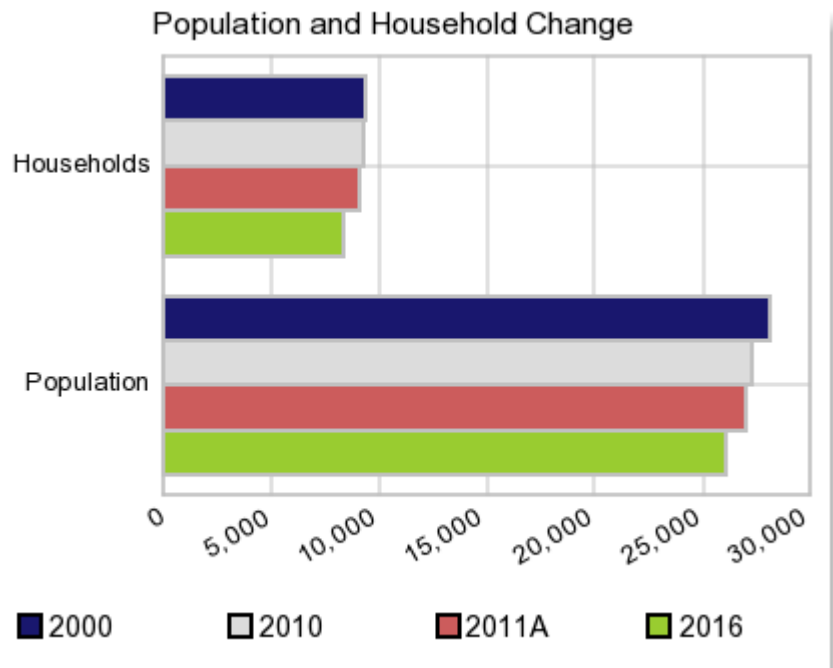
Current Geography Selection: (1 Selected) Counties: Hardeman County

## Executive Summary Report with Charts

### Population Demographics:

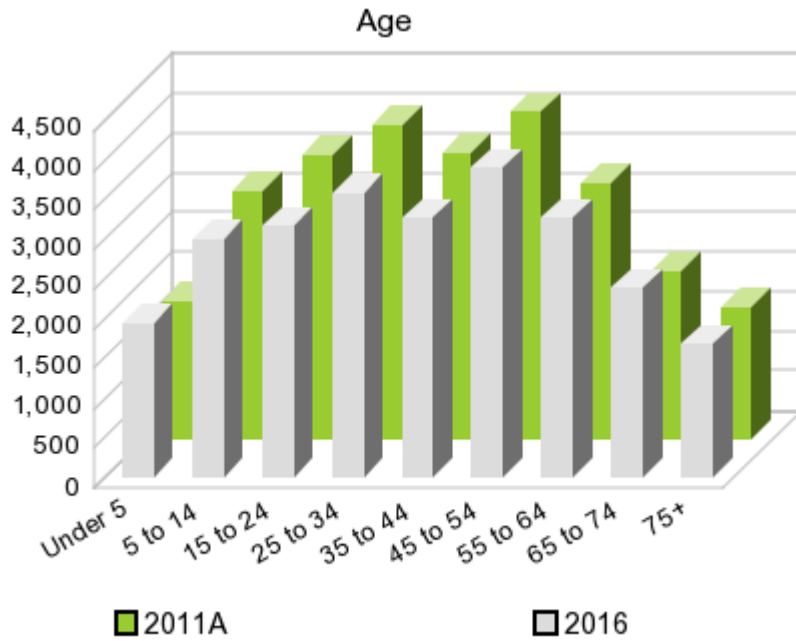
The number of households in the study area in 2000 was **9,412** and changed to **9,301** in 2010, representing a change of **-1.2%**. The household count in 2011A was **9,099** and the household projection for 2016 is **8,335**, a change of **-8.4%**.

The population in the study area in 2000 was **28,105** and in 2010 it was **27,253**, roughly a **-3.0%** change. The population in 2011A was **27,028** and the projection for 2016 is **26,142** representing a change of **-3.3%**.



	2000 Census	2010 Census	2011A Estimate	2016 Projection	Percent Change	
					2000 to 2010	2011 to 2016
Total Population	28,105	27,253	27,028	26,142	-3.0%	-3.3%
Total Households	9,412	9,301	9,099	8,335	12.4%	-8.4%

### Population by Age



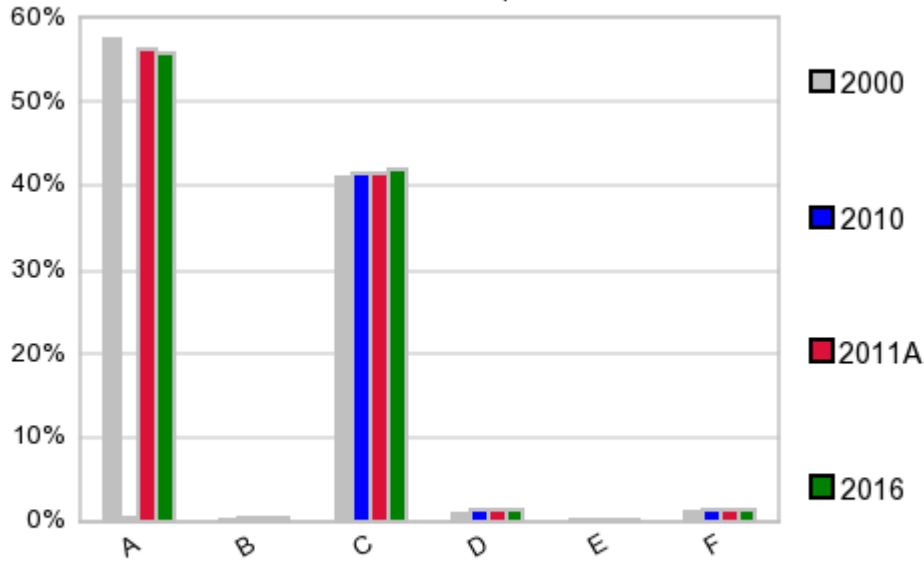
In 1990, the median age of the total population in the study area was **33**, and in 2000, it was **36**. The median age in 2011A is **39** and it is predicted to change in five years to **39** years. In 2011A, females represented **46.2%** of the population with a median age of **42** and males represented **53.8%** of the population with a median age of **36** years. In 2011A, the most prominent age group in this geography is **Age 45 to 54** years. The age group least represented in this geography is **75 +** years.

**Age Groups\***

	1990 Census		2000 Census		2011A Estimate		2016 Projection		Percent Change	
		%		%		%		%	1990 to 2000	2011 to 2016
0 to 4	1,772	7.6%	1,667	5.9%	1,722	6.4%	1,952	7.5%	-5.9%	13.4%
5 to 14	3,772	16.1%	3,896	13.9%	3,109	11.5%	2,980	11.4%	3.3%	-4.2%
15 to 19	1,773	7.6%	1,860	6.6%	1,747	6.5%	1,534	5.9%	4.9%	-12.2%
20 to 24	1,548	6.6%	2,046	7.3%	1,828	6.8%	1,623	6.2%	32.2%	-11.2%
25 to 34	3,574	15.3%	4,116	14.6%	3,944	14.6%	3,568	13.6%	15.2%	-9.5%
35 to 44	3,230	13.8%	4,694	16.7%	3,602	13.3%	3,267	12.5%	45.3%	-9.3%
45 to 54	2,237	9.6%	3,830	13.6%	4,100	15.2%	3,880	14.8%	71.2%	-5.4%
55 to 64	2,132	9.1%	2,457	8.7%	3,206	11.9%	3,260	12.5%	15.2%	1.7%
65 to 74	1,851	7.9%	1,918	6.8%	2,117	7.8%	2,391	9.1%	3.6%	12.9%
75 +	1,488	6.4%	1,621	5.8%	1,648	6.1%	1,684	6.4%	8.9%	2.2%

**Population by Race/Ethnicity**

### Race and Ethnicity Percent Composition



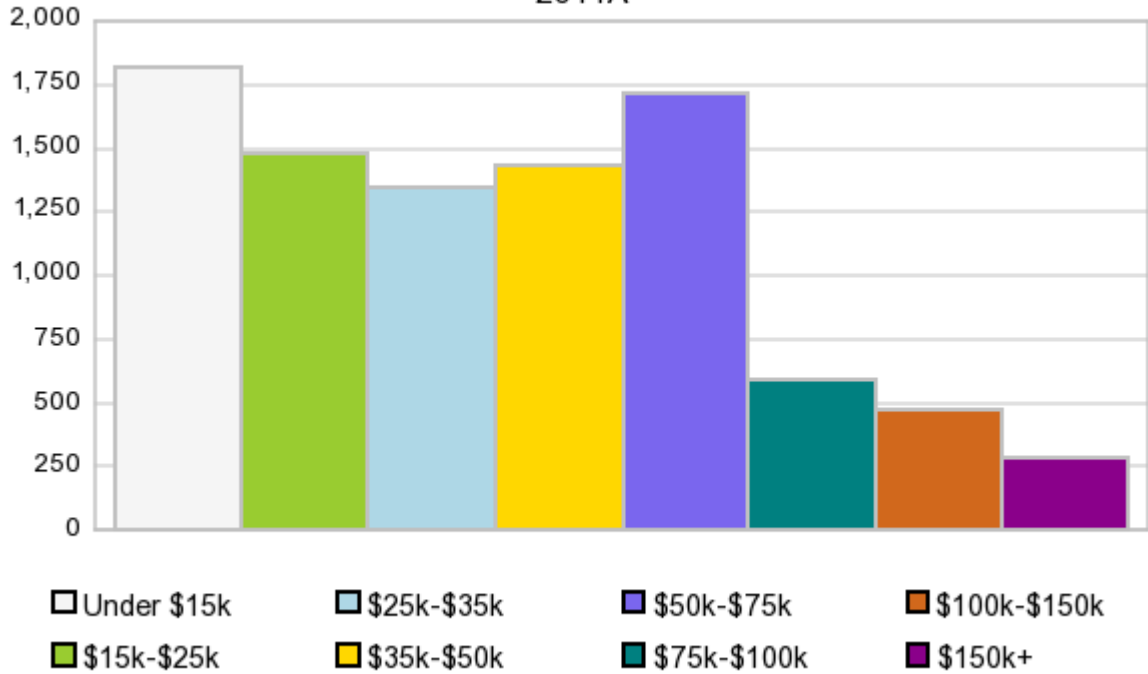
In 2011A, the predominant race/ethnicity category in this study area is **White**. The race & ethnicity category least represented in this geography is **American Indian, Alaska Native**.

A: White  
 B: Asian Pac Islr  
 C: Black  
 D: Hispanic  
 E: Amer Indian or Alaska Native  
 F: Other or Multi Race

Race & Ethnicity	2000		2010		2011A		2016		Percent Change	
	Census	%	Census	%	Estimate	%	Projection	%	2000 to 2010	2011 to 2016
White	16,116	57.3%	15,379	56.4%	15,220	56.3%	14,611	55.9%	-4.6%	-4.0%
Black	11,516	41.0%	11,281	41.4%	11,218	41.5%	10,964	41.9%	-2.0%	-2.3%
American Indian or Alaska Native	74	0.3%	61	0.2%	60	0.2%	58	0.2%	-17.6%	-3.3%
Asian/Hawaiian/PI	93	0.3%	147	0.5%	146	0.5%	139	0.5%	58.1%	-4.8%
Some Other Race	85	0.3%	120	0.4%	77	0.3%	76	0.3%	41.2%	-1.3%
Two or More Races	221	0.8%	265	1.0%	305	1.1%	293	1.1%	19.9%	-3.9%
Hispanic Ethnicity	273	1.0%	376	1.4%	372	1.4%	357	1.4%	37.7%	-4.0%
Not Hispanic or Latino	27,832	99.0%	26,877	98.6%	26,656	98.6%	25,785	98.6%	-3.4%	-3.3%

### Households by Income

## Households by Income Group 2011A



In 2011A the predominant household income category in this study area is **\$0 - \$15K**, and the income group that is least represented in this geography is **\$150K +**.

### HH Income Categories\*

	1990 Census		2000 Census		2011A Estimate		2016 Projection		Percent Change	
		%		%		%		%	1990 to 2000	2011 to 2016
\$0 - \$15,000	3,319	40.1%	2,594	27.6%	1,818	20.0%	1,464	17.6%	-21.8%	-19.5%
\$15,000 - \$24,999	1,978	23.9%	1,568	16.7%	1,475	16.2%	1,292	15.5%	-20.7%	-12.4%
\$25,000 - \$34,999	1,312	15.9%	1,422	15.1%	1,341	14.7%	1,231	14.8%	8.4%	-8.2%
\$35,000 - \$49,999	981	11.9%	1,727	18.3%	1,425	15.7%	1,203	14.4%	76.0%	-15.6%
\$50,000 - \$74,999	432	5.2%	1,323	14.1%	1,710	18.8%	1,716	20.6%	206.3%	0.4%
\$75,000 - \$99,999	172	2.1%	502	5.3%	586	6.4%	574	6.9%	191.9%	-2.0%
\$100,000 - \$149,999	56	0.7%	151	1.6%	465	5.1%	542	6.5%	169.6%	16.6%
\$150,000 +	25	0.3%	125	1.3%	279	3.1%	310	3.7%	400.0%	11.1%
Average Hhld Income	\$24,029		\$37,646		\$47,277		\$51,585		56.7%	9.1%
Median Hhld Income	\$19,105		\$29,155		\$34,229		\$37,054		52.6%	8.3%
Per Capita Income	\$8,654		\$12,607		\$18,746		\$19,854		45.7%	5.9%

\*This Census 2010 data has not yet been released

Current year data is for the year **2011**, 5 year projected data is for the year **2016**. More About Our Data.  
Demographic data ' 2011 by Experian/Applied Geographic Solutions.

Business List data ' 2011 by D&B<sup>fi</sup>. All rights reserved. All D&B information is powered by DUNSRight™, D&B's Quality Process.

**' 2011. DDR is brought to you by Alteryx, Inc.**

Alteryx, DemographicsNow.com and the Alteryx and DemographicsNow.com logos are trademarks of Alteryx, Inc. All rights reserved.

Privacy Statement | License Agreement