



Date: 05/03/12

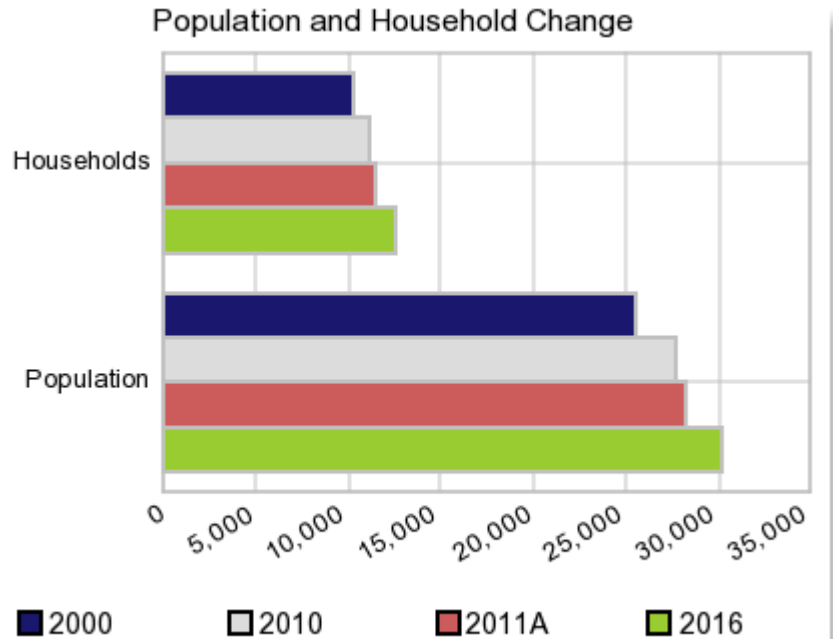
Current Geography Selection: (1 Selected) Counties: Henderson County

Executive Summary Report with Charts

Population Demographics:

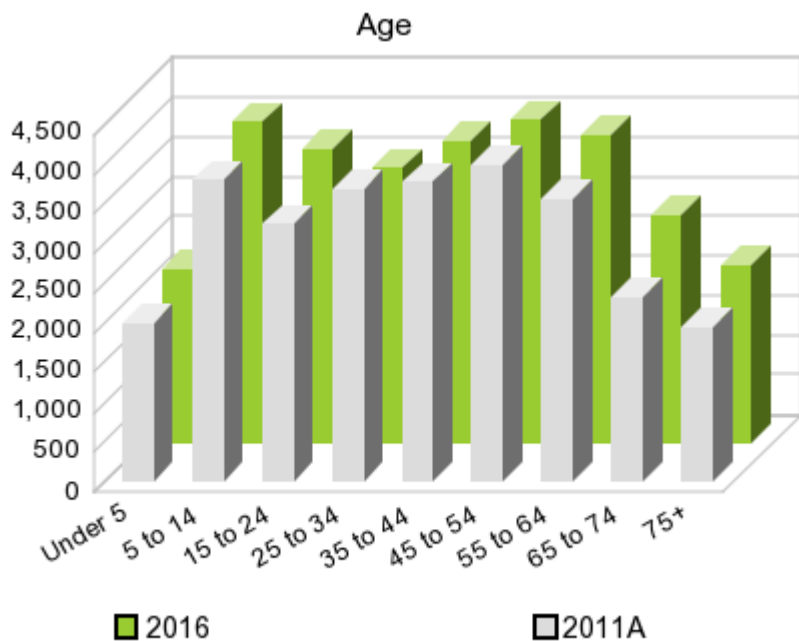
The number of households in the study area in 2000 was **10,306** and changed to **11,224** in 2010, representing a change of **8.9%**. The household count in 2011A was **11,477** and the household projection for 2016 is **12,494**, a change of **8.9%**.

The population in the study area in 2000 was **25,522** and in 2010 it was **27,769**, roughly a **8.8%** change. The population in 2011A was **28,260** and the projection for 2016 is **30,226** representing a change of **7.0%**.



	2000 Census	2010 Census	2011A Estimate	2016 Projection	Percent Change	
					2000 to 2010	2011 to 2016
Total Population	25,522	27,769	28,260	30,226	8.8%	7.0%
Total Households	10,306	11,224	11,477	12,494	31.6%	8.9%

Population by Age



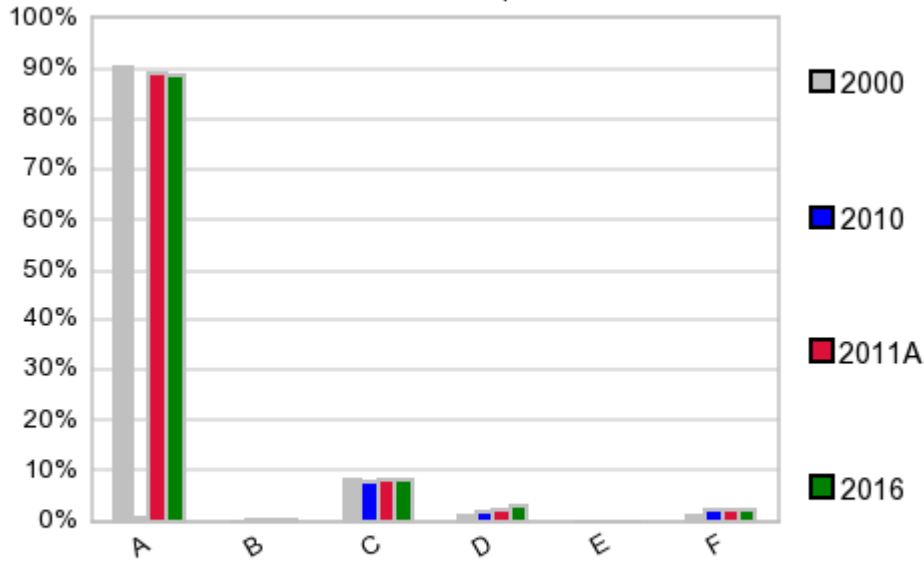
In 1990, the median age of the total population in the study area was **36**, and in 2000, it was **37**. The median age in 2011A is **39** and it is predicted to change in five years to **40** years. In 2011A, females represented **52.0%** of the population with a median age of **40** and males represented **48.0%** of the population with a median age of **38** years. In 2011A, the most prominent age group in this geography is **Age 45 to 54** years. The age group least represented in this geography is **18 to 24** years.

Age Groups*

	1990		2000		2011A		2016		Percent Change	
	Census	%	Census	%	Estimate	%	Projection	%	1990 to 2000	2011 to 2016
0 to 4	1,352	6.2%	1,652	6.5%	1,984	7.0%	2,188	7.2%	22.2%	10.3%
5 to 14	3,175	14.5%	3,501	13.7%	3,793	13.4%	4,040	13.4%	10.3%	6.5%
15 to 19	1,536	7.0%	1,725	6.8%	1,692	6.0%	1,949	6.5%	12.3%	15.2%
20 to 24	1,374	6.3%	1,558	6.1%	1,536	5.4%	1,749	5.8%	13.4%	13.9%
25 to 34	3,287	15.0%	3,384	13.3%	3,661	13.0%	3,460	11.4%	3.0%	-5.5%
35 to 44	3,149	14.4%	3,967	15.5%	3,774	13.4%	3,800	12.6%	26.0%	0.7%
45 to 54	2,392	11.0%	3,543	13.9%	3,998	14.1%	4,055	13.4%	48.1%	1.4%
55 to 64	2,283	10.5%	2,561	10.0%	3,562	12.6%	3,875	12.8%	12.2%	8.8%
65 to 74	1,871	8.6%	2,013	7.9%	2,317	8.2%	2,877	9.5%	7.6%	24.2%
75 +	1,427	6.5%	1,618	6.3%	1,941	6.9%	2,231	7.4%	13.4%	14.9%

Population by Race/Ethnicity

Race and Ethnicity Percent Composition



In 2011A, the predominant race/ethnicity category in this study area is **White**. The race & ethnicity category least represented in this geography is **American Indian, Alaska Native**.

A: White
 B: Asian Pac Islr
 C: Black
 D: Hispanic
 E: Amer Indian or Alaska Native
 F: Other or Multi Race

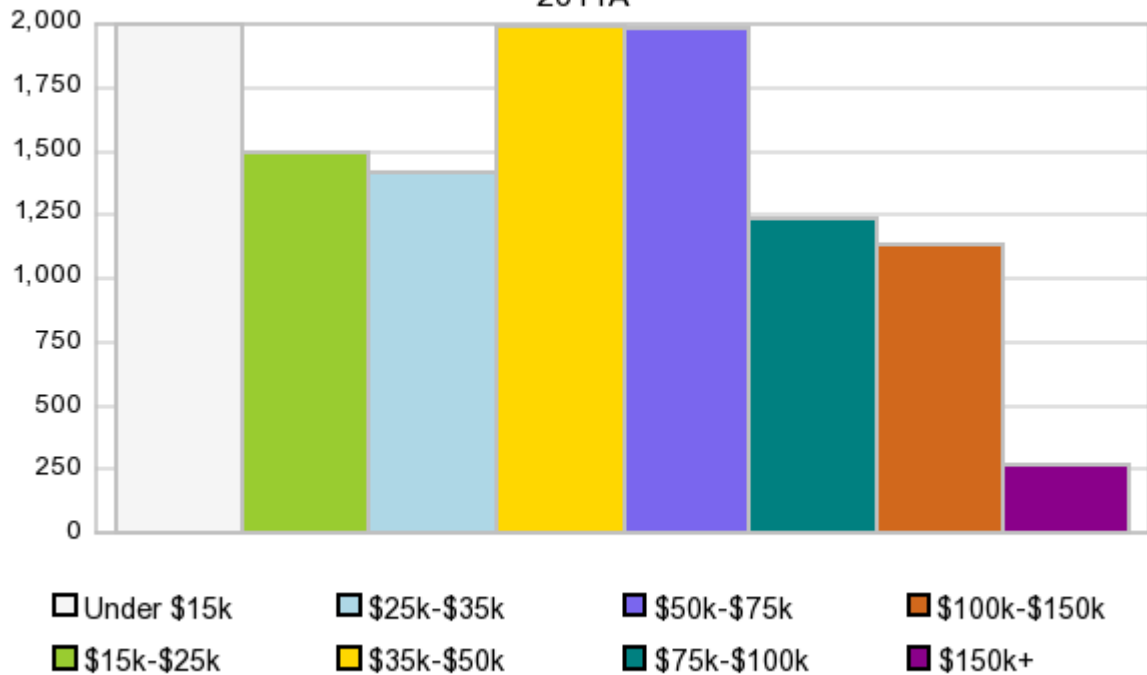
Race & Ethnicity

	2000		2010		2011A		2016		Percent Change	
	Census	%	Census	%	Estimate	%	Projection	%	2000 to 2010	2011 to 2016
White	23,085	90.5%	24,764	89.2%	25,184	89.1%	26,863	88.9%	7.3%	6.7%
Black	2,042	8.0%	2,187	7.9%	2,242	7.9%	2,463	8.2%	7.1%	9.9%
American Indian or Alaska Native	33	0.1%	48	0.2%	49	0.2%	53	0.2%	45.5%	8.2%
Asian/Hawaiian/PI	38	0.1%	79	0.3%	81	0.3%	89	0.3%	107.9%	9.9%
Some Other Race	84	0.3%	206	0.7%	227	0.8%	248	0.8%	145.2%	9.3%
Two or More Races	240	0.9%	485	1.7%	477	1.7%	510	1.7%	102.1%	6.9%
Hispanic Ethnicity	247	1.0%	532	1.9%	604	2.1%	888	2.9%	115.4%	47.0%
Not Hispanic or Latino	25,275	99.0%	27,237	98.1%	27,656	97.9%	29,338	97.1%	7.8%	6.1%

Households by Income

Households by Income Group 2011A

In 2011A the predominant household income category in this study area is **\$0 - \$15K**, and the income group that is least represented in this geography is **\$150K +**.



HH Income Categories*

	1990		2000		2011A		2016		Percent Change	
	Census	%	Census	%	Estimate	%	Projection	%	1990 to 2000	2011 to 2016
\$0 - \$15,000	3,011	35.3%	2,172	21.1%	1,991	17.3%	2,033	16.3%	-27.9%	2.1%
\$15,000 - \$24,999	1,958	23.0%	1,809	17.6%	1,497	13.0%	1,425	11.4%	-7.6%	-4.8%
\$25,000 - \$34,999	1,686	19.8%	1,588	15.4%	1,414	12.3%	1,374	11.0%	-5.8%	-2.8%
\$35,000 - \$49,999	1,193	14.0%	2,001	19.4%	1,982	17.3%	2,031	16.3%	67.7%	2.5%
\$50,000 - \$74,999	544	6.4%	1,725	16.7%	1,974	17.2%	2,131	17.1%	217.1%	8.0%
\$75,000 - \$99,999	80	0.9%	603	5.9%	1,229	10.7%	1,578	12.6%	653.8%	28.4%
\$100,000 - \$149,999	56	0.7%	246	2.4%	1,126	9.8%	1,605	12.8%	339.3%	42.5%
\$150,000 +	8	0.1%	162	1.6%	264	2.3%	317	2.5%	1,925.0%	20.1%
Average Hhld Income	\$24,068		\$41,198		\$51,624		\$56,880		71.2%	10.2%
Median Hhld Income	\$21,122		\$32,340		\$40,784		\$44,458		53.1%	9.0%
Per Capita Income	\$9,426		\$16,636		\$21,148		\$23,710		76.5%	12.1%

*This Census 2010 data has not yet been released

Current year data is for the year **2011**, 5 year projected data is for the year **2016**. More About Our Data.
Demographic data © 2011 by Experian/Applied Geographic Solutions.

Business List data © 2011 by D&B®. All rights reserved. All D&B information is powered by DUNSRight™, D&B's Quality Process.

Alteryx, DemographicsNow.com and the Alteryx and DemographicsNow.com logos are trademarks of Alteryx, Inc.
All rights reserved.

Privacy Statement | License Agreement