



Date: 05/03/12

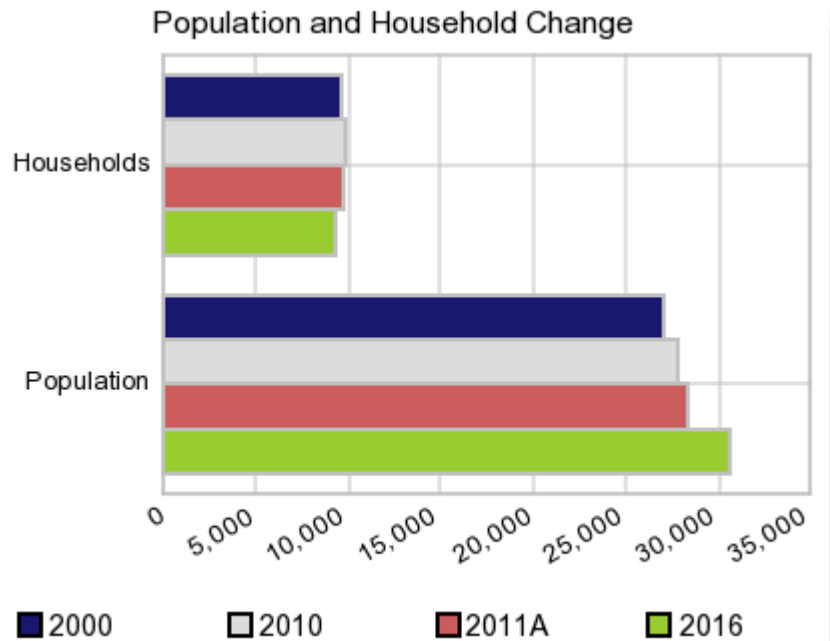
Current Geography Selection: (1 Selected) Counties: Lauderdale County

Executive Summary Report with Charts

Population Demographics:

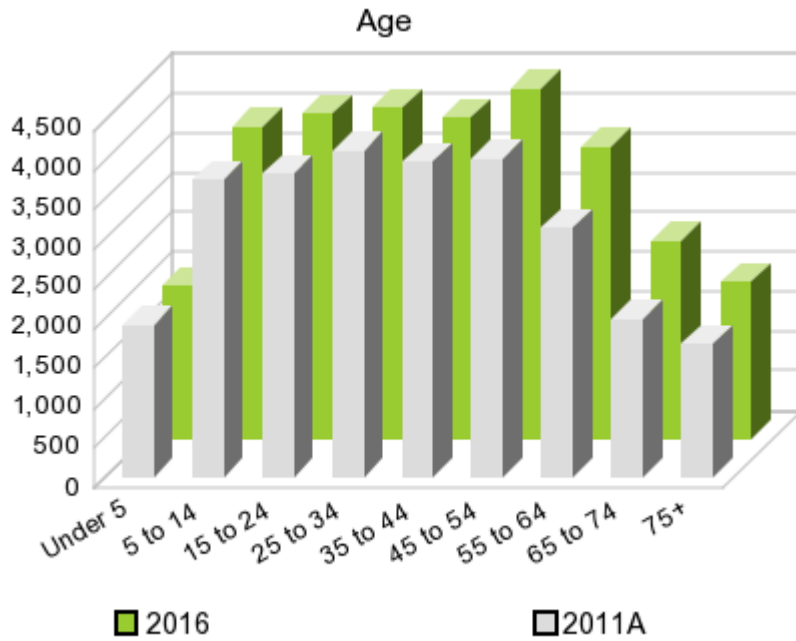
The number of households in the study area in 2000 was **9,567** and changed to **9,795** in 2010, representing a change of **2.4%**. The household count in 2011A was **9,699** and the household projection for 2016 is **9,321**, a change of **-3.9%**.

The population in the study area in 2000 was **27,101** and in 2010 it was **27,815**, roughly a **2.6%** change. The population in 2011A was **28,382** and the projection for 2016 is **30,648** representing a change of **8.0%**.



	2000 Census	2010 Census	2011A Estimate	2016 Projection	Percent Change	
					2000 to 2010	2011 to 2016
Total Population	27,101	27,815	28,382	30,648	2.6%	8.0%
Total Households	9,567	9,795	9,699	9,321	16.3%	-3.9%

Population by Age



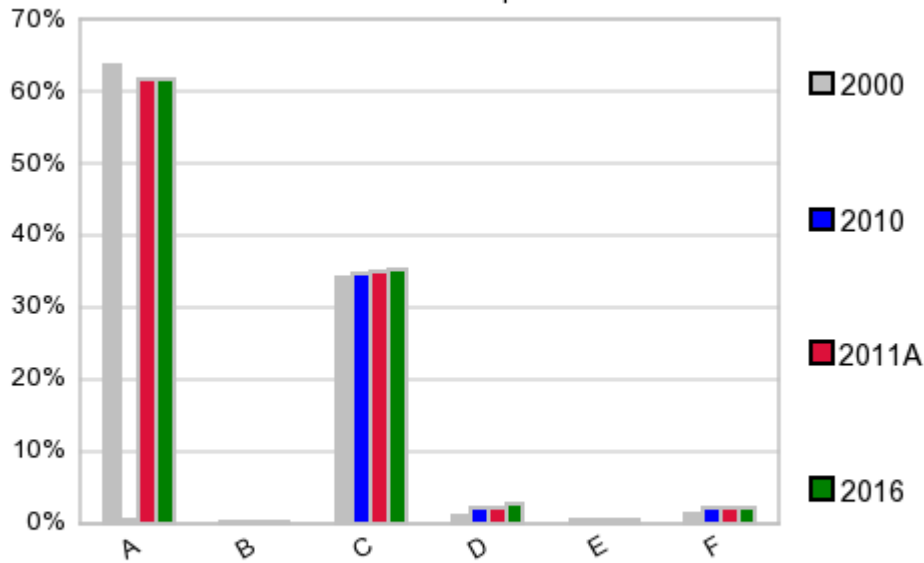
In 1990, the median age of the total population in the study area was **33**, and in 2000, it was **35**. The median age in 2011A is **37** and it is predicted to change in five years to **38** years. In 2011A, females represented **47.9%** of the population with a median age of **39** and males represented **52.1%** of the population with a median age of **35** years. In 2011A, the most prominent age group in this geography is **Age 25 to 34** years. The age group least represented in this geography is **75 +** years.

Age Groups*

	1990		2000		2011A		2016		Percent Change	
	Census	%	Census	%	Estimate	%	Projection	%	1990 to 2000	2011 to 2016
0 to 4	1,686	7.2%	1,838	6.8%	1,914	6.7%	1,932	6.3%	9.0%	0.9%
5 to 14	3,720	15.8%	3,758	13.9%	3,738	13.2%	3,912	12.8%	1.0%	4.7%
15 to 19	1,672	7.1%	1,871	6.9%	1,941	6.8%	2,042	6.7%	11.9%	5.2%
20 to 24	1,643	7.0%	2,040	7.5%	1,879	6.6%	2,037	6.6%	24.2%	8.4%
25 to 34	3,854	16.4%	4,100	15.1%	4,105	14.5%	4,166	13.6%	6.4%	1.5%
35 to 44	3,133	13.3%	4,342	16.0%	3,966	14.0%	4,033	13.2%	38.6%	1.7%
45 to 54	2,351	10.0%	3,457	12.8%	4,012	14.1%	4,398	14.4%	47.0%	9.6%
55 to 64	1,908	8.1%	2,427	9.0%	3,135	11.0%	3,666	12.0%	27.2%	16.9%
65 to 74	1,885	8.0%	1,633	6.0%	1,995	7.0%	2,490	8.1%	-13.4%	24.8%
75 +	1,639	7.0%	1,635	6.0%	1,690	6.0%	1,962	6.4%	-0.2%	16.1%

Population by Race/Ethnicity

Race and Ethnicity Percent Composition



In 2011A, the predominant race/ethnicity category in this study area is **White**. The race & ethnicity category least represented in this geography is **Asian or Pacific Islander**.

A: White
 B: Asian Pac Islidr
 C: Black
 D: Hispanic
 E: Amer Indian or Alaska Native
 F: Other or Multi Race

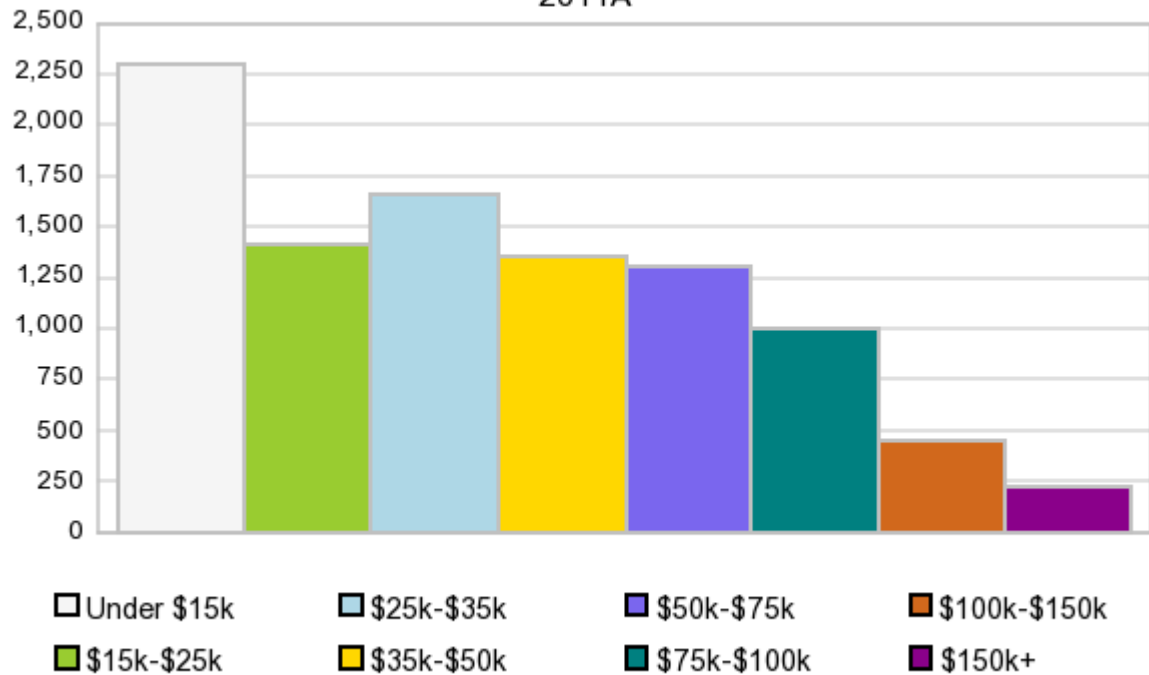
Race & Ethnicity

Race & Ethnicity	2000 Census		2010 Census		2011A Estimate		2016 Projection		Percent Change	
	Count	%	Count	%	Count	%	Count	%	2000 to 2010	2011 to 2016
White	17,295	63.8%	17,236	62.0%	17,559	61.9%	18,846	61.5%	-0.3%	7.3%
Black	9,236	34.1%	9,720	34.9%	9,947	35.1%	10,859	35.4%	5.2%	9.2%
American Indian or Alaska Native	169	0.6%	176	0.6%	179	0.6%	192	0.6%	4.1%	7.3%
Asian/Hawaiian/PI	48	0.2%	63	0.2%	64	0.2%	68	0.2%	31.3%	6.3%
Some Other Race	142	0.5%	257	0.9%	238	0.8%	257	0.8%	81.0%	8.0%
Two or More Races	211	0.8%	363	1.3%	395	1.4%	426	1.4%	72.0%	7.8%
Hispanic Ethnicity	314	1.2%	564	2.0%	618	2.2%	835	2.7%	79.6%	35.1%
Not Hispanic or Latino	26,787	98.8%	27,251	98.0%	27,764	97.8%	29,815	97.3%	1.7%	7.4%

Households by Income

Households by Income Group 2011A

In 2011A the predominant household income category in this study area is **\$0 - \$15K**, and the income group that is least represented in this geography is **\$150K +**.



HH Income Categories*

	1990		2000		2011A		2016		Percent Change	
	Census	%	Census	%	Estimate	%	Projection	%	1990 to 2000	2011 to 2016
\$0 - \$15,000	3,391	40.3%	2,657	27.8%	2,298	23.7%	2,051	22.0%	-21.6%	-10.7%
\$15,000 - \$24,999	1,844	21.9%	1,503	15.7%	1,408	14.5%	1,300	13.9%	-18.5%	-7.7%
\$25,000 - \$34,999	1,372	16.3%	1,296	13.5%	1,661	17.1%	1,719	18.4%	-5.5%	3.5%
\$35,000 - \$49,999	1,140	13.5%	1,780	18.6%	1,351	13.9%	1,146	12.3%	56.1%	-15.2%
\$50,000 - \$74,999	502	6.0%	1,676	17.5%	1,312	13.5%	1,113	11.9%	233.9%	-15.2%
\$75,000 - \$99,999	81	1.0%	327	3.4%	1,001	10.3%	1,232	13.2%	303.7%	23.1%
\$100,000 - \$149,999	45	0.5%	204	2.1%	444	4.6%	517	5.5%	353.3%	16.4%
\$150,000 +	45	0.5%	124	1.3%	219	2.3%	244	2.6%	175.6%	11.4%
Average Hhld Income	\$23,326		\$37,108		\$43,236		\$44,510		59.1%	2.9%
Median Hhld Income	\$18,962		\$29,749		\$32,027		\$32,740		56.9%	2.2%
Per Capita Income	\$8,516		\$13,100		\$16,599		\$15,504		53.8%	-6.6%

*This Census 2010 data has not yet been released

Current year data is for the year **2011**, 5 year projected data is for the year **2016**. More About Our Data.
Demographic data © 2011 by Experian/Applied Geographic Solutions.

Business List data © 2011 by D&B®. All rights reserved. All D&B information is powered by DUNSRight™, D&B's Quality Process.

Alteryx, DemographicsNow.com and the Alteryx and DemographicsNow.com logos are trademarks of Alteryx, Inc.
All rights reserved.

Privacy Statement | License Agreement