



Date: 05/03/12

Current Geography Selection: (1 Selected) Counties: Madison County

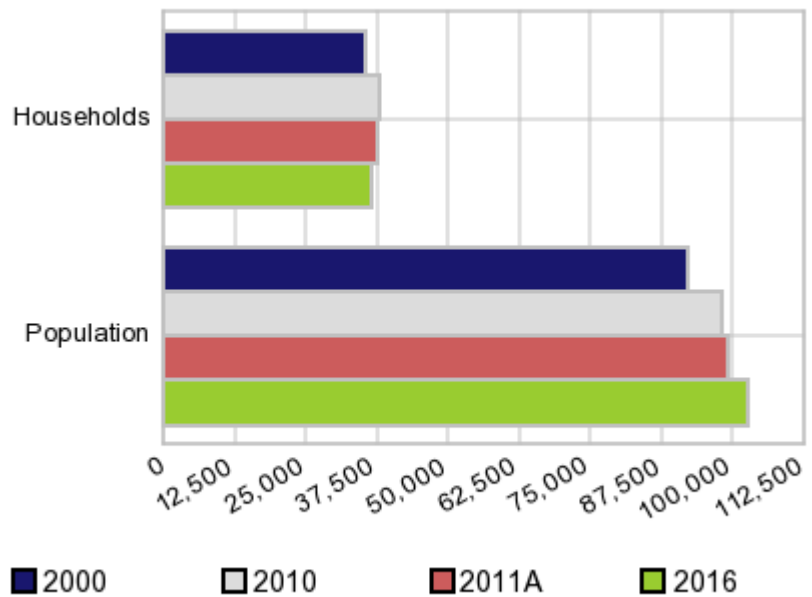
## Executive Summary Report with Charts

### Population Demographics:

The number of households in the study area in 2000 was **35,552** and changed to **38,073** in 2010, representing a change of **7.1%**. The household count in 2011A was **37,774** and the household projection for 2016 is **36,590**, a change of **-3.1%**.

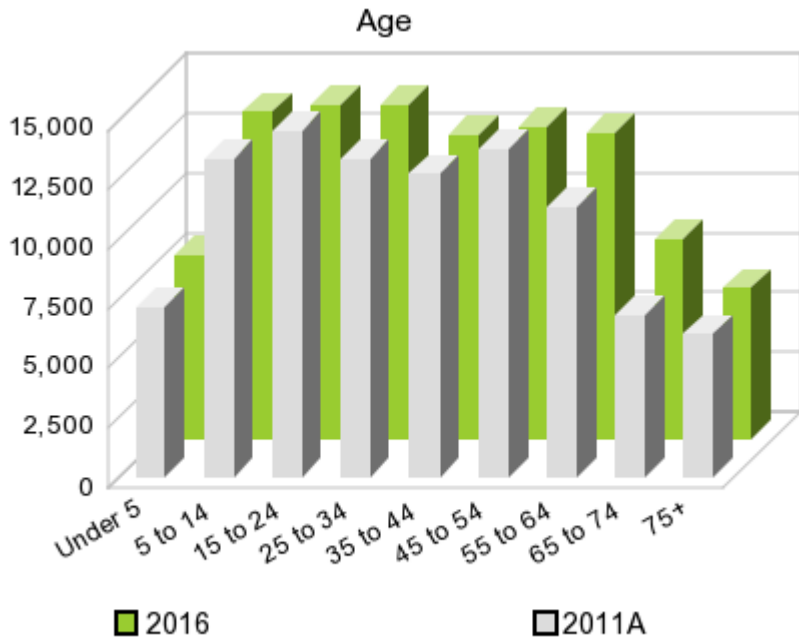
The population in the study area in 2000 was **91,837** and in 2010 it was **98,294**, roughly a **7.0%** change. The population in 2011A was **99,176** and the projection for 2016 is **102,716** representing a change of **3.6%**.

Population and Household Change



	2000 Census	2010 Census	2011A Estimate	2016 Projection	Percent Change	
					2000 to 2010	2011 to 2016
Total Population	91,837	98,294	99,176	102,716	7.0%	3.6%
Total Households	35,552	38,073	37,774	36,590	28.6%	-3.1%

### Population by Age



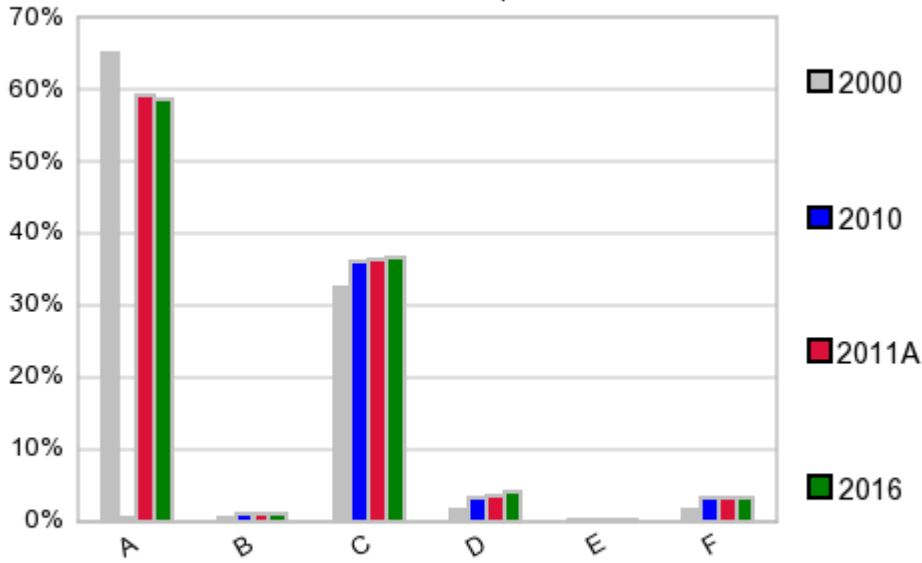
In 1990, the median age of the total population in the study area was **33**, and in 2000, it was **35**. The median age in 2011A is **36** and it is predicted to change in five years to **37** years. In 2011A, females represented **51.8%** of the population with a median age of **38** and males represented **48.2%** of the population with a median age of **34** years. In 2011A, the most prominent age group in this geography is **Age 45 to 54** years. The age group least represented in this geography is **75 +** years.

**Age Groups\***

	1990		2000		2011A		2016		Percent Change	
	Census	%	Census	%	Estimate	%	Projection	%	1990 to 2000	2011 to 2016
0 to 4	5,504	7.1%	6,367	6.9%	7,099	7.2%	7,686	7.5%	15.7%	8.3%
5 to 14	11,603	14.9%	13,435	14.6%	13,376	13.5%	13,665	13.3%	15.8%	2.2%
15 to 19	6,039	7.7%	7,113	7.8%	7,305	7.4%	6,716	6.5%	17.8%	-8.1%
20 to 24	5,869	7.5%	6,904	7.5%	7,247	7.3%	7,281	7.1%	17.6%	0.5%
25 to 34	12,595	16.2%	12,437	13.5%	13,375	13.5%	14,027	13.7%	-1.3%	4.9%
35 to 44	11,571	14.8%	14,317	15.6%	12,756	12.9%	12,757	12.4%	23.7%	0.0%
45 to 54	7,474	9.6%	12,360	13.5%	13,820	13.9%	13,091	12.7%	65.4%	-5.3%
55 to 64	6,559	8.4%	7,611	8.3%	11,375	11.5%	12,805	12.5%	16.0%	12.6%
65 to 74	5,850	7.5%	5,811	6.3%	6,814	6.9%	8,343	8.1%	-0.7%	22.4%
75 +	4,913	6.3%	5,482	6.0%	6,000	6.1%	6,316	6.2%	11.6%	5.3%

**Population by Race/Ethnicity**

### Race and Ethnicity Percent Composition



In 2011A, the predominant race/ethnicity category in this study area is **White**. The race & ethnicity category least represented in this geography is **American Indian, Alaska Native**.

A: White  
 B: Asian Pac Islr  
 C: Black  
 D: Hispanic  
 E: Amer Indian or Alaska Native  
 F: Other or Multi Race

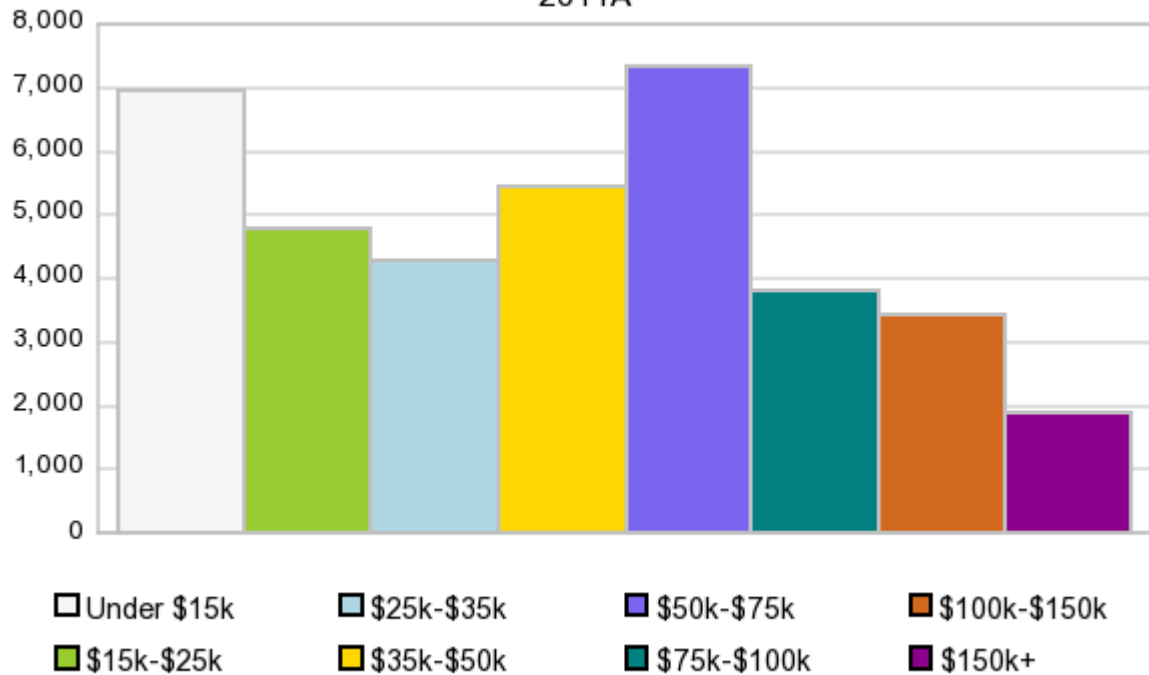
### Race & Ethnicity

Race & Ethnicity	2000 Census		2010 Census		2011A Estimate		2016 Projection		Percent Change	
	Count	%	Count	%	Count	%	Count	%	2000 to 2010	2011 to 2016
White	59,877	65.2%	58,226	59.2%	58,650	59.1%	60,361	58.8%	-2.8%	2.9%
Black	29,810	32.5%	35,636	36.3%	36,060	36.4%	37,750	36.8%	19.5%	4.7%
American Indian or Alaska Native	150	0.2%	184	0.2%	185	0.2%	191	0.2%	22.7%	3.2%
Asian/Hawaiian/PI	591	0.6%	949	1.0%	956	1.0%	983	1.0%	60.6%	2.8%
Some Other Race	616	0.7%	1,851	1.9%	1,302	1.3%	1,352	1.3%	200.5%	3.8%
Two or More Races	793	0.9%	1,448	1.5%	2,026	2.0%	2,080	2.0%	82.6%	2.7%
Hispanic Ethnicity	1,572	1.7%	3,306	3.4%	3,490	3.5%	4,219	4.1%	110.3%	20.9%
Not Hispanic or Latino	90,265	98.3%	94,988	96.6%	95,684	96.5%	98,496	95.9%	5.2%	2.9%

### Households by Income

### Households by Income Group 2011A

In 2011A the predominant household income category in this study area is **\$50K - \$75K**, and the income group that is least represented in this geography is **\$150K +**.



#### HH Income Categories\*

	1990 Census		2000 Census		2011A Estimate		2016 Projection		Percent Change	
		%		%		%		%	1990 to 2000	2011 to 2016
\$0 - \$15,000	9,275	31.3%	6,593	18.5%	6,917	18.3%	6,889	18.8%	-28.9%	-0.4%
\$15,000 - \$24,999	6,083	20.5%	5,202	14.6%	4,764	12.6%	4,319	11.8%	-14.5%	-9.3%
\$25,000 - \$34,999	4,803	16.2%	4,838	13.6%	4,270	11.3%	3,775	10.3%	0.7%	-11.6%
\$35,000 - \$49,999	4,797	16.2%	6,174	17.4%	5,447	14.4%	4,802	13.1%	28.7%	-11.8%
\$50,000 - \$74,999	3,174	10.7%	6,806	19.1%	7,321	19.4%	6,942	19.0%	114.4%	-5.2%
\$75,000 - \$99,999	748	2.5%	2,840	8.0%	3,787	10.0%	3,980	10.9%	279.7%	5.1%
\$100,000 - \$149,999	414	1.4%	1,886	5.3%	3,411	9.0%	3,884	10.6%	355.6%	13.9%
\$150,000 +	301	1.0%	1,213	3.4%	1,853	4.9%	2,003	5.5%	303.0%	8.1%
Average Hhld Income	\$30,350		\$49,434		\$56,229		\$59,911		62.9%	6.6%
Median Hhld Income	\$23,721		\$37,295		\$42,450		\$45,296		57.2%	6.7%
Per Capita Income	\$11,625		\$19,137		\$22,610		\$22,683		64.6%	0.3%

\*This Census 2010 data has not yet been released

Current year data is for the year **2011**, 5 year projected data is for the year **2016**. More About Our Data.  
Demographic data © 2011 by Experian/Applied Geographic Solutions.

Business List data © 2011 by D&B®. All rights reserved. All D&B information is powered by DUNSRight™, D&B's Quality Process.

Alteryx, DemographicsNow.com and the Alteryx and DemographicsNow.com logos are trademarks of Alteryx, Inc.  
All rights reserved.

Privacy Statement | License Agreement