



Date: 05/03/12

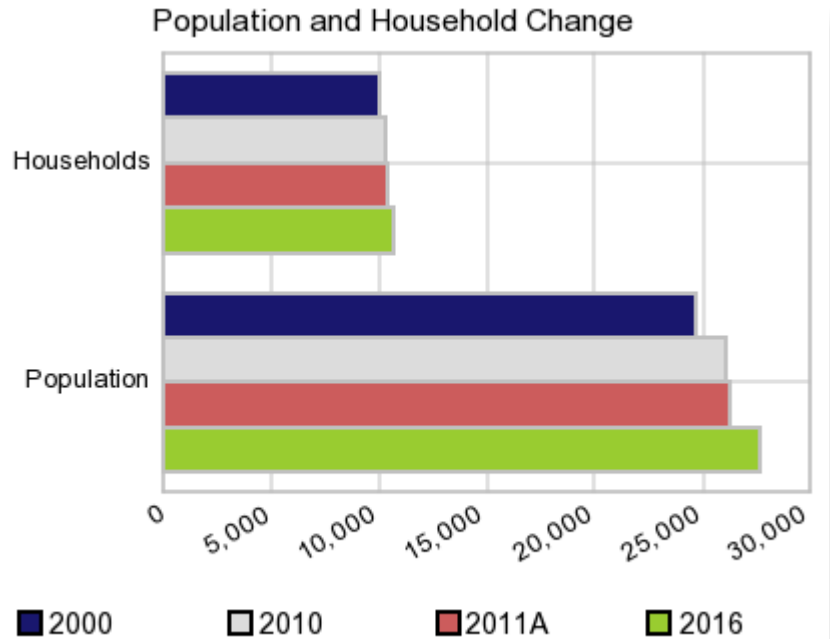
Current Geography Selection: (1 Selected) Counties: McNairy County

Executive Summary Report with Charts

Population Demographics:

The number of households in the study area in 2000 was **10,001** and changed to **10,326** in 2010, representing a change of **3.3%**. The household count in 2011A was **10,370** and the household projection for 2016 is **10,667**, a change of **2.9%**.

The population in the study area in 2000 was **24,705** and in 2010 it was **26,075**, roughly a **5.5%** change. The population in 2011A was **26,325** and the projection for 2016 is **27,680** representing a change of **5.1%**.



	2000 Census	2010 Census	2011A Estimate	2016 Projection	Percent Change	
					2000 to 2010	2011 to 2016
Total Population	24,705	26,075	26,325	27,680	5.5%	5.1%
Total Households	10,001	10,326	10,370	10,667	16.7%	2.9%

Population by Age



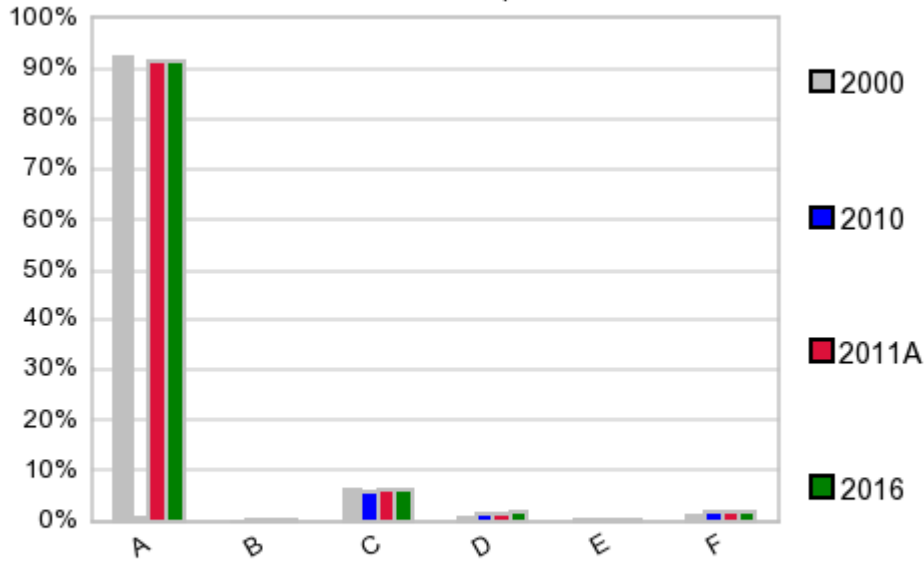
In 1990, the median age of the total population in the study area was **37**, and in 2000, it was **39**. The median age in 2011A is **41** and it is predicted to change in five years to **41** years. In 2011A, females represented **52.0%** of the population with a median age of **43** and males represented **48.1%** of the population with a median age of **40** years. In 2011A, the most prominent age group in this geography is **Age 45 to 54** years. The age group least represented in this geography is **18 to 24** years.

Age Groups*

	1990 Census		2000 Census		2011A Estimate		2016 Projection		Percent Change	
		%		%		%		%	1990 to 2000	2011 to 2016
0 to 4	1,333	5.9%	1,522	6.2%	1,798	6.8%	1,978	7.2%	14.2%	10.0%
5 to 14	3,190	14.2%	3,349	13.6%	3,367	12.8%	3,524	12.7%	5.0%	4.7%
15 to 19	1,565	7.0%	1,546	6.3%	1,690	6.4%	1,758	6.4%	-1.2%	4.0%
20 to 24	1,308	5.8%	1,413	5.7%	1,457	5.5%	1,743	6.3%	8.0%	19.6%
25 to 34	3,159	14.1%	3,042	12.3%	2,897	11.0%	2,935	10.6%	-3.7%	1.3%
35 to 44	3,198	14.2%	3,561	14.4%	3,247	12.3%	3,062	11.1%	11.4%	-5.7%
45 to 54	2,727	12.1%	3,447	14.0%	3,544	13.5%	3,556	12.8%	26.4%	0.3%
55 to 64	2,363	10.5%	2,865	11.6%	3,441	13.1%	3,449	12.5%	21.2%	0.2%
65 to 74	1,978	8.8%	2,166	8.8%	2,712	10.3%	3,186	11.5%	9.5%	17.5%
75 +	1,641	7.3%	1,772	7.2%	2,160	8.2%	2,468	8.9%	8.0%	14.3%

Population by Race/Ethnicity

Race and Ethnicity Percent Composition



In 2011A, the predominant race/ethnicity category in this study area is **White**. The race & ethnicity category least represented in this geography is **Asian or Pacific Islander**.

A: White
 B: Asian Pac Islidr
 C: Black
 D: Hispanic
 E: Amer Indian or Alaska Native
 F: Other or Multi Race

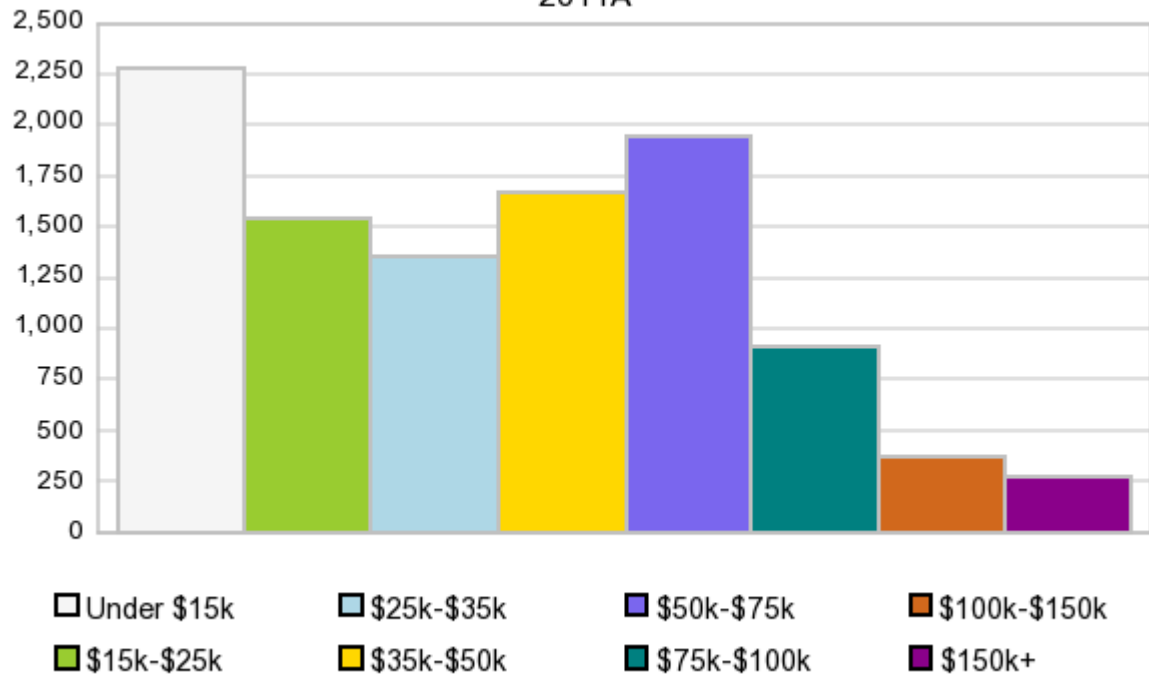
Race & Ethnicity

	2000		2010		2011A		2016		Percent Change	
	Census	%	Census	%	Estimate	%	Projection	%	2000 to 2010	2011 to 2016
White	22,782	92.2%	23,925	91.8%	24,134	91.7%	25,309	91.4%	5.0%	4.9%
Black	1,540	6.2%	1,550	5.9%	1,582	6.0%	1,720	6.2%	0.7%	8.7%
American Indian or Alaska Native	50	0.2%	60	0.2%	61	0.2%	65	0.2%	20.0%	6.6%
Asian/Hawaiian/PI	32	0.1%	51	0.2%	51	0.2%	56	0.2%	59.4%	9.8%
Some Other Race	59	0.2%	150	0.6%	86	0.3%	92	0.3%	154.2%	7.0%
Two or More Races	241	1.0%	339	1.3%	409	1.6%	436	1.6%	40.7%	6.6%
Hispanic Ethnicity	229	0.9%	396	1.5%	417	1.6%	501	1.8%	72.9%	20.1%
Not Hispanic or Latino	24,476	99.1%	25,679	98.5%	25,908	98.4%	27,178	98.2%	4.9%	4.9%

Households by Income

Households by Income Group 2011A

In 2011A the predominant household income category in this study area is **\$0 - \$15K**, and the income group that is least represented in this geography is **\$150K +**.



HH Income Categories*

	1990		2000		2011A		2016		Percent Change	
	Census	%	Census	%	Estimate	%	Projection	%	1990 to 2000	2011 to 2016
\$0 - \$15,000	3,723	42.1%	2,607	26.1%	2,283	22.0%	2,192	20.6%	-30.0%	-4.0%
\$15,000 - \$24,999	1,877	21.2%	1,588	15.9%	1,541	14.9%	1,518	14.2%	-15.4%	-1.5%
\$25,000 - \$34,999	1,518	17.2%	1,672	16.7%	1,353	13.0%	1,250	11.7%	10.1%	-7.6%
\$35,000 - \$49,999	1,101	12.4%	1,664	16.6%	1,672	16.1%	1,685	15.8%	51.1%	0.8%
\$50,000 - \$74,999	492	5.6%	1,608	16.1%	1,945	18.8%	2,116	19.8%	226.8%	8.8%
\$75,000 - \$99,999	50	0.6%	493	4.9%	920	8.9%	1,128	10.6%	886.0%	22.6%
\$100,000 - \$149,999	61	0.7%	207	2.1%	376	3.6%	456	4.3%	239.3%	21.3%
\$150,000 +	23	0.3%	157	1.6%	276	2.7%	320	3.0%	582.6%	15.9%
Average Hhld Income	\$23,173		\$39,930		\$47,136		\$50,839		72.3%	7.9%
Median Hhld Income	\$18,759		\$30,208		\$35,041		\$37,473		61.0%	6.9%
Per Capita Income	\$9,177		\$16,164		\$18,831		\$19,883		76.1%	5.6%

*This Census 2010 data has not yet been released

Current year data is for the year **2011**, 5 year projected data is for the year **2016**. More About Our Data.
Demographic data © 2011 by Experian/Applied Geographic Solutions.

Business List data © 2011 by D&B®. All rights reserved. All D&B information is powered by DUNSRight™, D&B's Quality Process.

Alteryx, DemographicsNow.com and the Alteryx and DemographicsNow.com logos are trademarks of Alteryx, Inc.
All rights reserved.

[Privacy Statement](#) | [License Agreement](#)