



Date: 05/03/12

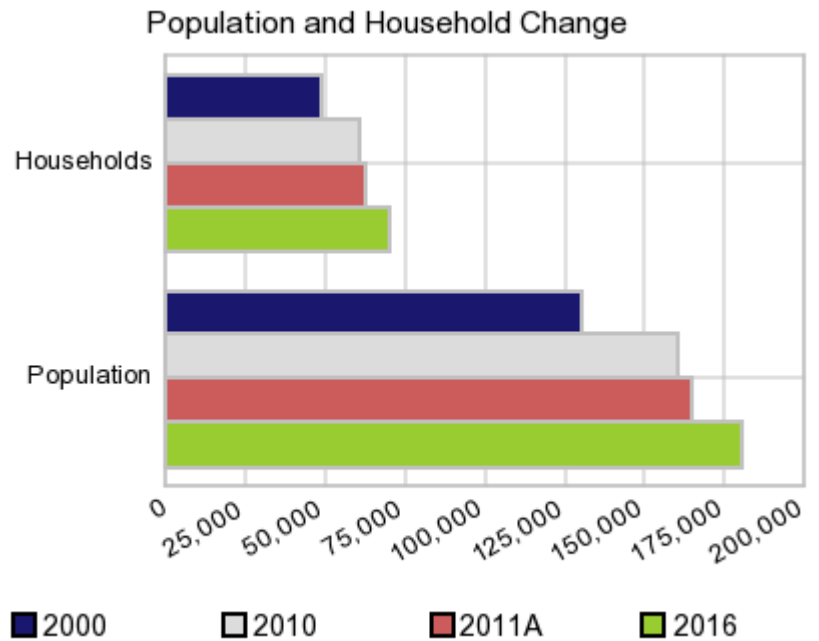
Current Geography Selection: (1 Selected) Counties: Sumner County

Executive Summary Report with Charts

Population Demographics:

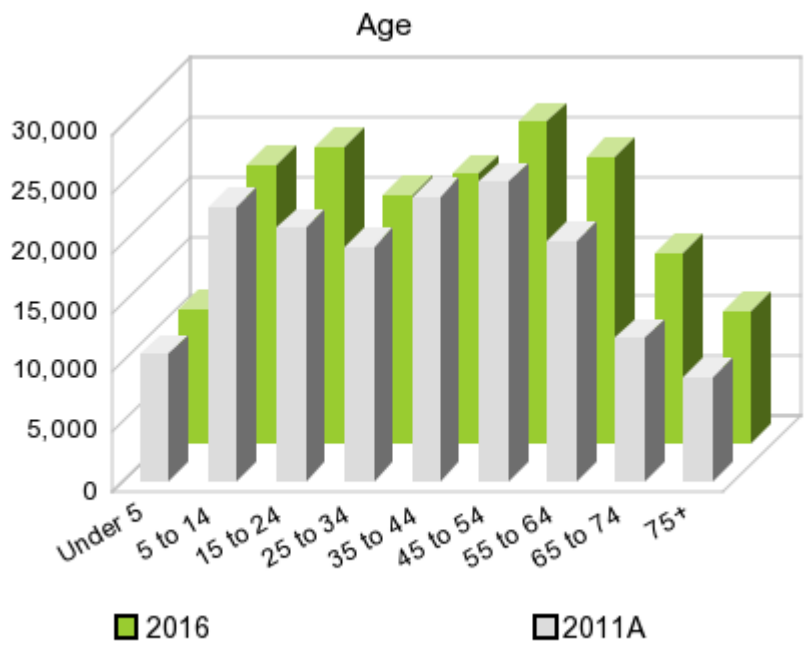
The number of households in the study area in 2000 was **48,941** and changed to **60,975** in 2010, representing a change of **24.6%**. The household count in 2011A was **62,828** and the household projection for 2016 is **70,188**, a change of **11.7%**.

The population in the study area in 2000 was **130,449** and in 2010 it was **160,645**, roughly a **23.1%** change. The population in 2011A was **164,649** and the projection for 2016 is **180,600** representing a change of **9.7%**.



	2000 Census	2010 Census	2011A Estimate	2016 Projection	Percent Change	
					2000 to 2010	2011 to 2016
Total Population	130,449	160,645	164,649	180,600	23.1%	9.7%
Total Households	48,941	60,975	62,828	70,188	65.5%	11.7%

Population by Age



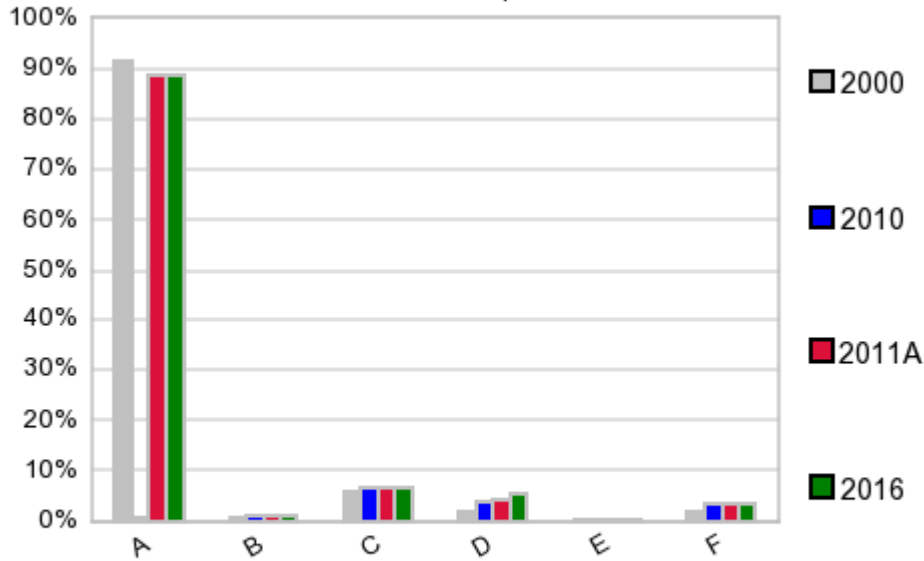
In 1990, the median age of the total population in the study area was **33**, and in 2000, it was **36**. The median age in 2011A is **39** and it is predicted to change in five years to **40** years. In 2011A, females represented **50.8%** of the population with a median age of **40** and males represented **49.2%** of the population with a median age of **37** years. In 2011A, the most prominent age group in this geography is **Age 45 to 54** years. The age group least represented in this geography is **75 +** years.

Age Groups*

	1990 Census		2000 Census		2011A Estimate		2016 Projection		Percent Change	
		%		%		%		%	1990 to 2000	2011 to 2016
0 to 4	7,254	7.0%	8,833	6.8%	10,759	6.5%	11,207	6.2%	21.8%	4.2%
5 to 14	16,192	15.7%	19,286	14.8%	22,970	14.0%	23,413	13.0%	19.1%	1.9%
15 to 19	8,003	7.8%	9,638	7.4%	11,348	6.9%	12,670	7.0%	20.4%	11.7%
20 to 24	6,585	6.4%	7,065	5.4%	9,901	6.0%	12,069	6.7%	7.3%	21.9%
25 to 34	16,730	16.2%	17,830	13.7%	19,633	11.9%	20,823	11.5%	6.6%	6.1%
35 to 44	17,207	16.7%	22,218	17.0%	23,825	14.5%	22,591	12.5%	29.1%	-5.2%
45 to 54	12,508	12.1%	18,955	14.5%	25,158	15.3%	26,942	14.9%	51.5%	7.1%
55 to 64	8,351	8.1%	12,708	9.7%	20,170	12.3%	23,938	13.3%	52.2%	18.7%
65 to 74	6,147	6.0%	7,698	5.9%	12,059	7.3%	15,958	8.8%	25.2%	32.3%
75 +	4,318	4.2%	6,218	4.8%	8,820	5.4%	10,985	6.1%	44.0%	24.5%

Population by Race/Ethnicity

Race and Ethnicity Percent Composition



In 2011A, the predominant race/ethnicity category in this study area is **White**. The race & ethnicity category least represented in this geography is **American Indian, Alaska Native**.

A: White
 B: Asian Pac Islidr
 C: Black
 D: Hispanic
 E: Amer Indian or Alaska Native
 F: Other or Multi Race

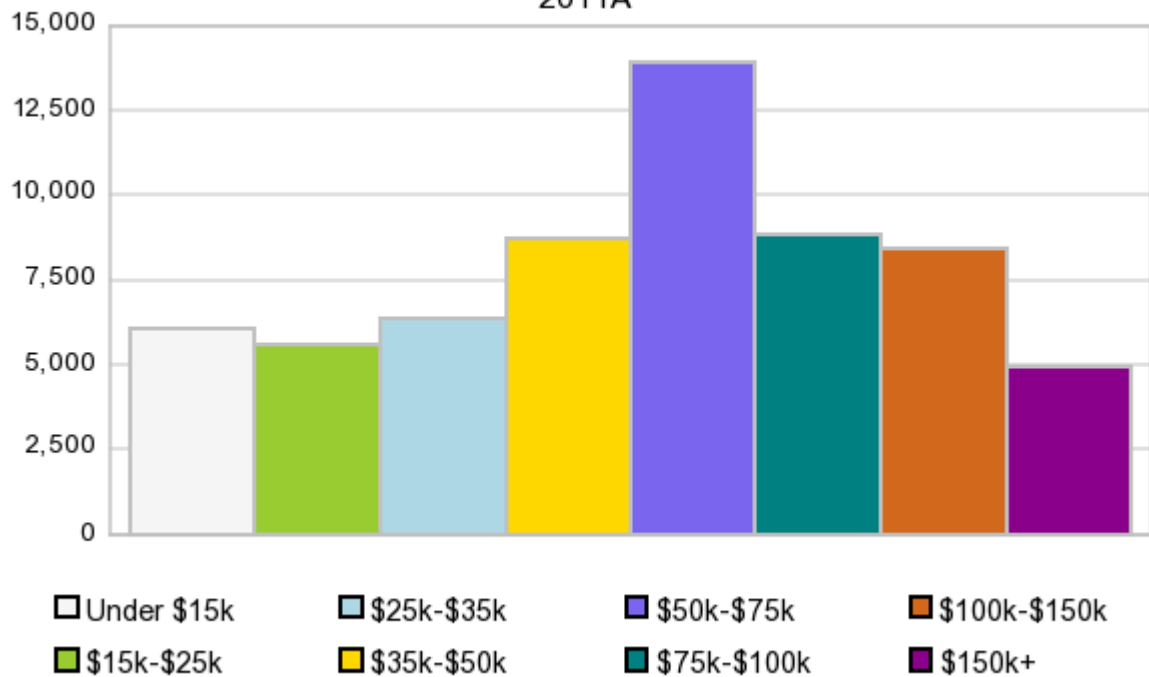
Race & Ethnicity

	2000		2010		2011A		2016		Percent Change	
	Census	%	Census	%	Estimate	%	Projection	%	2000 to 2010	2011 to 2016
White	119,344	91.5%	142,844	88.9%	146,306	88.9%	160,097	88.7%	19.7%	9.4%
Black	7,540	5.8%	10,311	6.4%	10,658	6.5%	12,062	6.7%	36.8%	13.2%
American Indian or Alaska Native	373	0.3%	462	0.3%	469	0.3%	517	0.3%	23.9%	10.2%
Asian/Hawaiian/PI	894	0.7%	1,752	1.1%	1,794	1.1%	1,975	1.1%	96.0%	10.1%
Some Other Race	1,047	0.8%	2,649	1.7%	2,355	1.4%	2,594	1.4%	153.0%	10.1%
Two or More Races	1,251	1.0%	2,627	1.6%	3,059	1.9%	3,366	1.9%	110.0%	10.0%
Hispanic Ethnicity	2,291	1.8%	6,308	3.9%	7,062	4.3%	10,060	5.6%	175.3%	42.5%
Not Hispanic or Latino	128,158	98.2%	154,337	96.1%	157,583	95.7%	170,547	94.4%	20.4%	8.2%

Households by Income

Households by Income Group 2011A

In 2011A the predominant household income category in this study area is **\$50K - \$75K**, and the income group that is least represented in this geography is **\$150K +**.



HH Income Categories*

	1990 Census		2000 Census		2011A Estimate		2016 Projection		Percent Change	
		%		%		%		%	1990 to 2000	2011 to 2016
\$0 - \$15,000	7,630	20.7%	6,104	12.5%	6,075	9.7%	6,176	8.8%	-20.0%	1.7%
\$15,000 - \$24,999	6,419	17.4%	5,943	12.1%	5,583	8.9%	5,481	7.8%	-7.4%	-1.8%
\$25,000 - \$34,999	6,140	16.7%	6,147	12.6%	6,373	10.1%	6,478	9.2%	0.1%	1.6%
\$35,000 - \$49,999	7,773	21.1%	8,541	17.5%	8,711	13.9%	8,739	12.5%	9.9%	0.3%
\$50,000 - \$74,999	6,032	16.4%	11,260	23.0%	13,891	22.1%	15,205	21.7%	86.7%	9.5%
\$75,000 - \$99,999	1,752	4.8%	5,679	11.6%	8,801	14.0%	10,463	14.9%	224.1%	18.9%
\$100,000 - \$149,999	687	1.9%	3,540	7.2%	8,438	13.4%	11,055	15.8%	415.3%	31.0%
\$150,000 +	415	1.1%	1,727	3.5%	4,946	7.9%	6,593	9.4%	316.1%	33.3%
Average Hhld Income	\$37,378		\$55,723		\$70,423		\$77,169		49.1%	9.6%
Median Hhld Income	\$31,764		\$46,126		\$57,612		\$62,418		45.2%	8.3%
Per Capita Income	\$13,410		\$20,906		\$27,108		\$30,241		55.9%	11.6%

*This Census 2010 data has not yet been released

Current year data is for the year **2011**, 5 year projected data is for the year **2016**. More About Our Data.
Demographic data © 2011 by Experian/Applied Geographic Solutions.

Business List data © 2011 by D&B®. All rights reserved. All D&B information is powered by DUNSRight™, D&B's Quality Process.

Alteryx, DemographicsNow.com and the Alteryx and DemographicsNow.com logos are trademarks of Alteryx, Inc.
All rights reserved.

[Privacy Statement](#) | [License Agreement](#)