



Date: 05/03/12

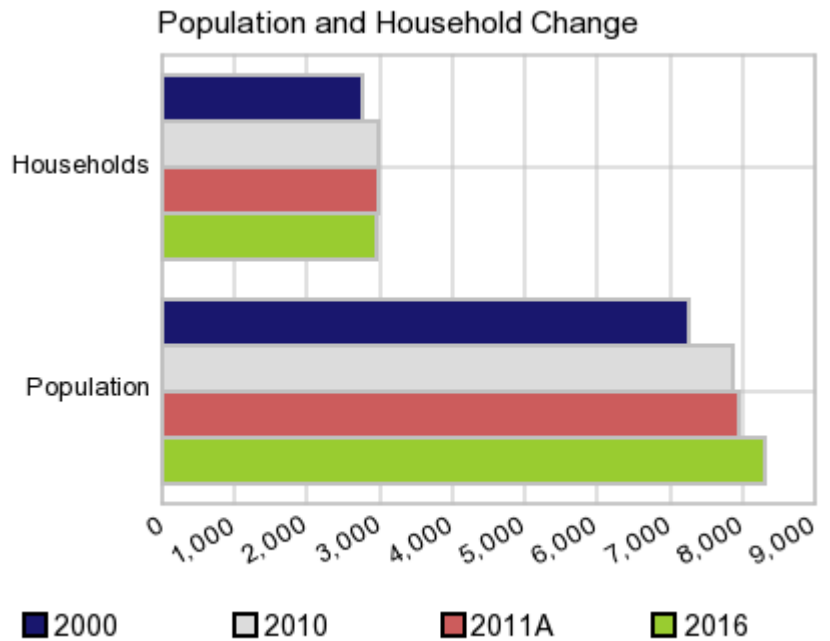
Current Geography Selection: (1 Selected) Counties: Troupdale County

## Executive Summary Report with Charts

### Population Demographics:

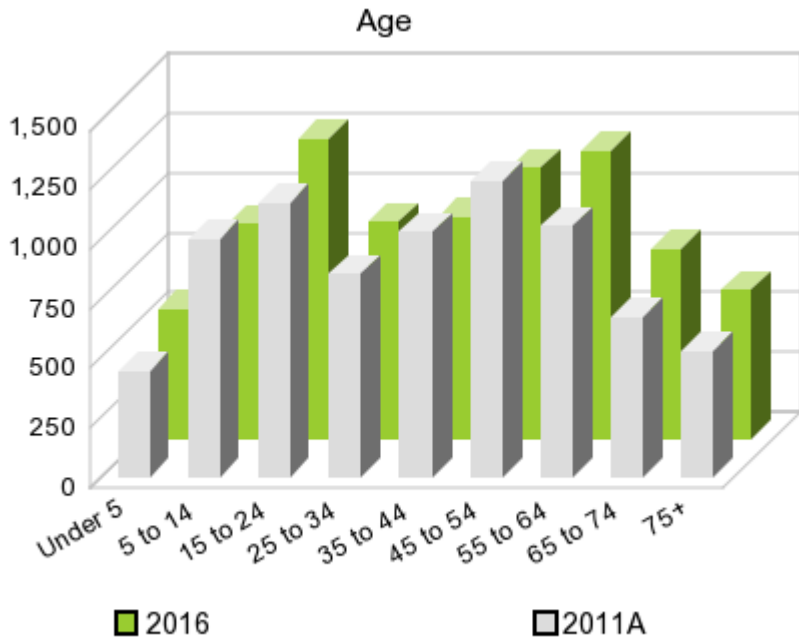
The number of households in the study area in 2000 was **2,780** and changed to **2,976** in 2010, representing a change of **7.1%**. The household count in 2011A was **2,971** and the household projection for 2016 is **2,950**, a change of **-0.7%**.

The population in the study area in 2000 was **7,259** and in 2010 it was **7,870**, roughly a **8.4%** change. The population in 2011A was **7,955** and the projection for 2016 is **8,297** representing a change of **4.3%**.



	2000 Census	2010 Census	2011A Estimate	2016 Projection	Percent Change	
					2000 to 2010	2011 to 2016
Total Population	7,259	7,870	7,955	8,297	8.4%	4.3%
Total Households	2,780	2,976	2,971	2,950	31.6%	-0.7%

### Population by Age



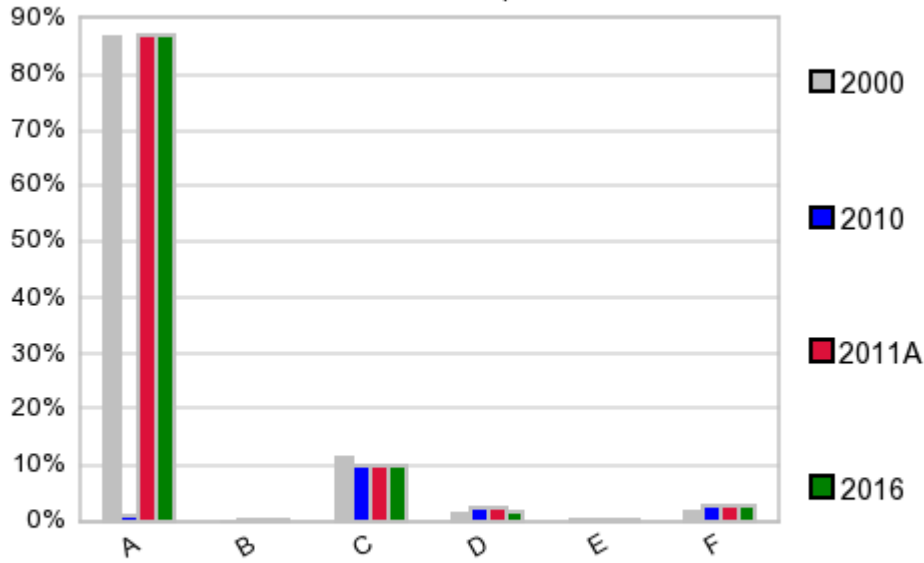
In 1990, the median age of the total population in the study area was **36**, and in 2000, it was **38**. The median age in 2011A is **40** and it is predicted to change in five years to **41** years. In 2011A, females represented **51.3%** of the population with a median age of **41** and males represented **48.8%** of the population with a median age of **40** years. In 2011A, the most prominent age group in this geography is **Age 45 to 54** years. The age group least represented in this geography is **0 to 4** years.

**Age Groups\***

	1990 Census		2000 Census		2011A Estimate		2016 Projection		Percent Change	
		%		%		%		%	1990 to 2000	2011 to 2016
0 to 4	342	5.8%	439	6.1%	448	5.6%	541	6.5%	28.4%	20.8%
5 to 14	851	14.4%	1,017	14.0%	995	12.5%	896	10.8%	19.5%	-10.0%
15 to 19	406	6.9%	494	6.8%	674	8.5%	568	6.9%	21.7%	-15.7%
20 to 24	362	6.1%	423	5.8%	475	6.0%	688	8.3%	16.9%	44.8%
25 to 34	885	15.0%	911	12.6%	853	10.7%	910	11.0%	2.9%	6.7%
35 to 44	863	14.6%	1,128	15.5%	1,027	12.9%	930	11.2%	30.7%	-9.4%
45 to 54	651	11.0%	1,040	14.3%	1,237	15.6%	1,136	13.7%	59.8%	-8.2%
55 to 64	567	9.6%	769	10.6%	1,053	13.2%	1,209	14.6%	35.6%	14.8%
65 to 74	556	9.4%	530	7.3%	669	8.4%	792	9.5%	-4.7%	18.4%
75 +	437	7.4%	508	7.0%	523	6.6%	623	7.5%	16.2%	19.1%

**Population by Race/Ethnicity**

### Race and Ethnicity Percent Composition



In 2011A, the predominant race/ethnicity category in this study area is **White**. The race & ethnicity category least represented in this geography is **Asian or Pacific Islander**.

A: White  
 B: Asian Pac Islidr  
 C: Black  
 D: Hispanic  
 E: Amer Indian or Alaska Native  
 F: Other or Multi Race

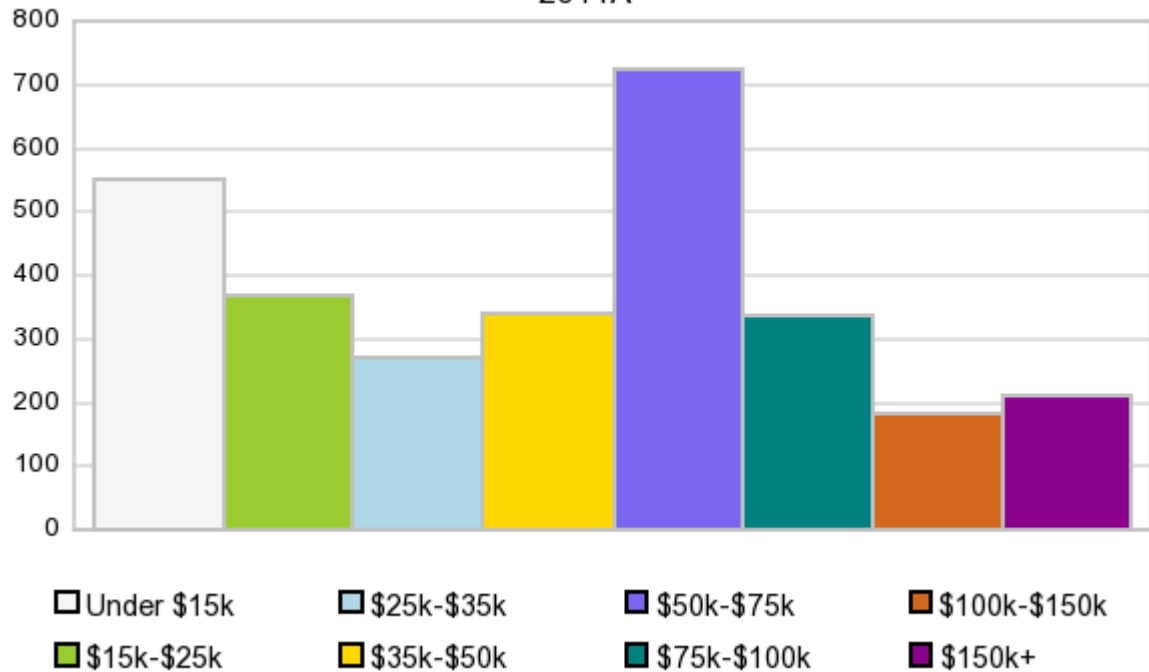
### Race & Ethnicity

	2000		2010		2011A		2016		Percent Change	
	Census	%	Census	%	Estimate	%	Projection	%	2000 to 2010	2011 to 2016
White	6,284	86.6%	6,852	87.1%	6,921	87.0%	7,199	86.8%	9.0%	4.0%
Black	824	11.4%	754	9.6%	767	9.6%	819	9.9%	-8.5%	6.8%
American Indian or Alaska Native	17	0.2%	33	0.4%	34	0.4%	35	0.4%	94.1%	2.9%
Asian/Hawaiian/PI	10	0.1%	19	0.2%	19	0.2%	20	0.2%	90.0%	5.3%
Some Other Race	72	1.0%	73	0.9%	119	1.5%	126	1.5%	1.4%	5.9%
Two or More Races	52	0.7%	139	1.8%	95	1.2%	98	1.2%	167.3%	3.2%
Hispanic Ethnicity	110	1.5%	198	2.5%	187	2.4%	150	1.8%	80.0%	-19.8%
Not Hispanic or Latino	7,149	98.5%	7,672	97.5%	7,768	97.7%	8,147	98.2%	7.3%	4.9%

### Households by Income

### Households by Income Group 2011A

In 2011A the predominant household income category in this study area is **\$50K - \$75K**, and the income group that is least represented in this geography is **\$100K - \$150K**.



#### HH Income Categories\*

	1990 Census		2000 Census		2011A Estimate		2016 Projection		Percent Change	
		%		%		%		%	1990 to 2000	2011 to 2016
\$0 - \$15,000	832	36.8%	568	20.4%	551	18.5%	519	17.6%	-31.7%	-5.8%
\$15,000 - \$24,999	538	23.8%	478	17.2%	367	12.4%	307	10.4%	-11.2%	-16.3%
\$25,000 - \$34,999	344	15.2%	425	15.3%	268	9.0%	233	7.9%	23.5%	-13.1%
\$35,000 - \$49,999	298	13.2%	528	19.0%	338	11.4%	290	9.8%	77.2%	-14.2%
\$50,000 - \$74,999	189	8.4%	483	17.4%	723	24.3%	765	25.9%	155.6%	5.8%
\$75,000 - \$99,999	45	2.0%	189	6.8%	335	11.3%	377	12.8%	320.0%	12.5%
\$100,000 - \$149,999	14	0.6%	68	2.4%	179	6.0%	213	7.2%	385.7%	19.0%
\$150,000 +	2	0.1%	41	1.5%	210	7.1%	246	8.3%	1,950.0%	17.1%
Average Hhld Income	\$24,893		\$40,744		\$59,382		\$67,195		63.7%	13.2%
Median Hhld Income	\$20,093		\$32,765		\$48,411		\$53,356		63.1%	10.2%
Per Capita Income	\$9,550		\$15,604		\$22,569		\$24,328		63.4%	7.8%

\*This Census 2010 data has not yet been released

Current year data is for the year **2011**, 5 year projected data is for the year **2016**. More About Our Data.  
Demographic data © 2011 by Experian/Applied Geographic Solutions.

Business List data © 2011 by D&B®. All rights reserved. All D&B information is powered by DUNSRight™, D&B's Quality Process.

Alteryx, DemographicsNow.com and the Alteryx and DemographicsNow.com logos are trademarks of Alteryx, Inc.  
All rights reserved.

Privacy Statement | License Agreement