



Date: 05/03/12

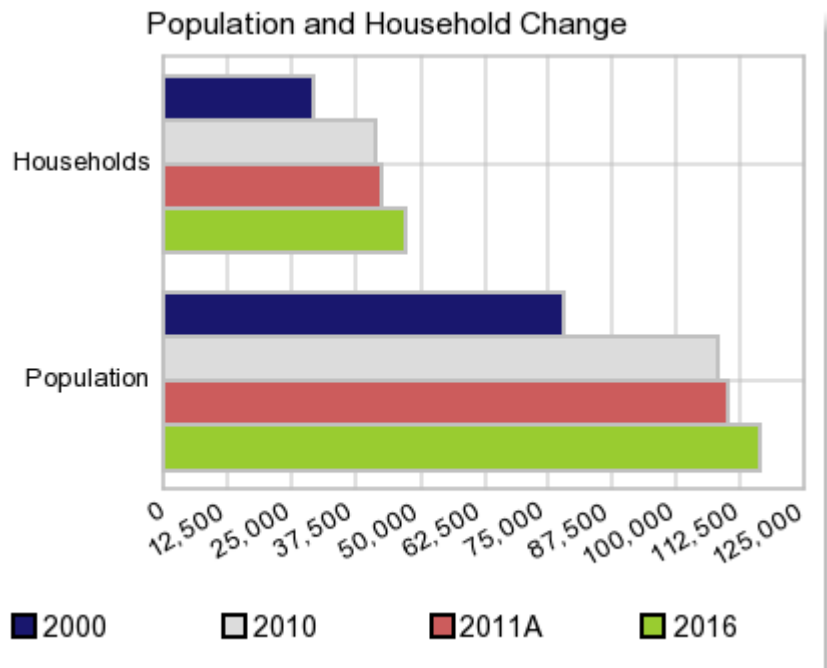
Current Geography Selection: (1 Selected) Counties: Comal County

Executive Summary Report with Charts

Population Demographics:

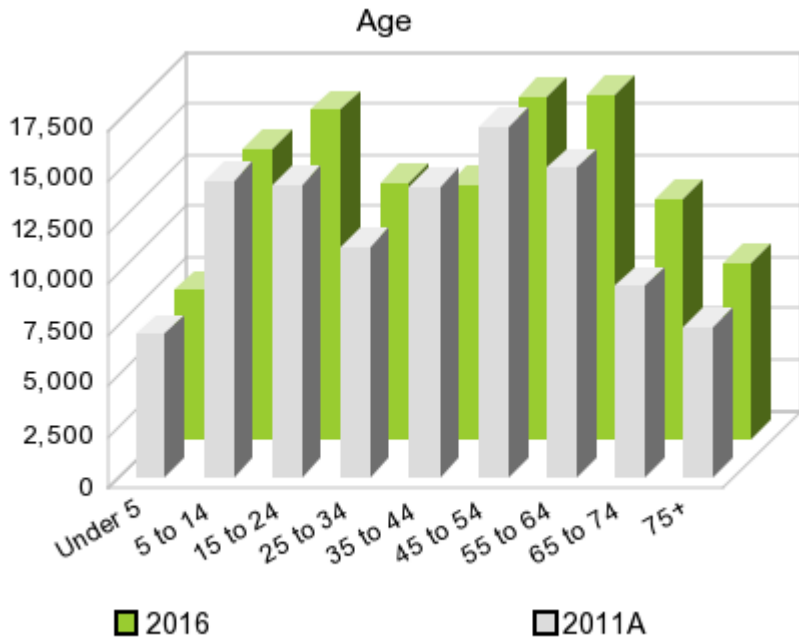
The number of households in the study area in 2000 was **29,066** and changed to **41,363** in 2010, representing a change of **42.3%**. The household count in 2011A was **42,492** and the household projection for 2016 is **47,007**, a change of **10.6%**.

The population in the study area in 2000 was **78,021** and in 2010 it was **108,472**, roughly a **39.0%** change. The population in 2011A was **110,066** and the projection for 2016 is **116,434** representing a change of **5.8%**.



	2000 Census	2010 Census	2011A Estimate	2016 Projection	Percent Change	
					2000 to 2010	2011 to 2016
Total Population	78,021	108,472	110,066	116,434	39.0%	5.8%
Total Households	29,066	41,363	42,492	47,007	114.2%	10.6%

Population by Age



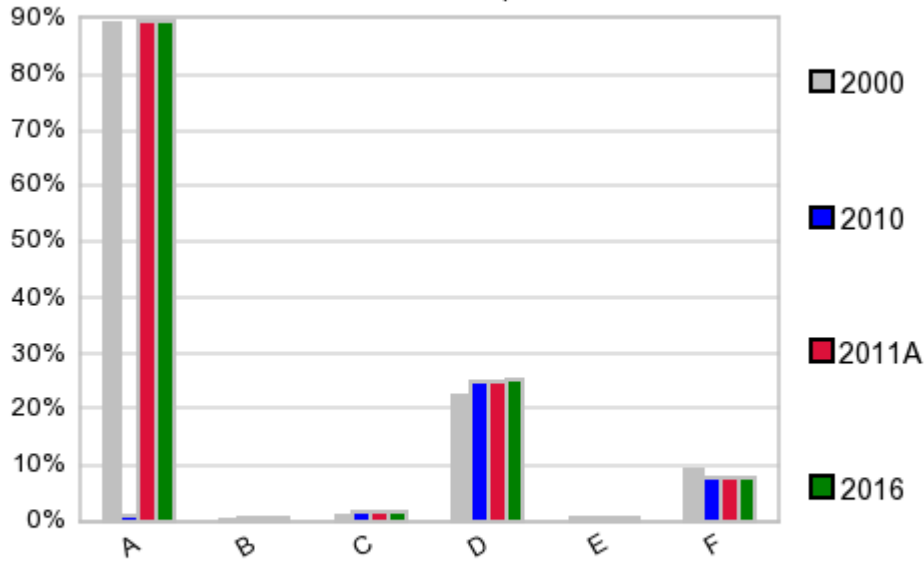
In 1990, the median age of the total population in the study area was **37**, and in 2000, it was **39**. The median age in 2011A is **41** and it is predicted to change in five years to **42** years. In 2011A, females represented **50.4%** of the population with a median age of **42** and males represented **49.6%** of the population with a median age of **40** years. In 2011A, the most prominent age group in this geography is **Age 45 to 54** years. The age group least represented in this geography is **18 to 24** years.

Age Groups*

	1990 Census		2000 Census		2011A Estimate		2016 Projection		Percent Change	
		%		%		%		%	1990 to 2000	2011 to 2016
0 to 4	3,633	7.0%	4,864	6.2%	6,964	6.3%	7,320	6.3%	33.9%	5.1%
5 to 14	7,421	14.3%	11,492	14.7%	14,458	13.1%	14,221	12.2%	54.9%	-1.6%
15 to 19	3,522	6.8%	5,442	7.0%	7,802	7.1%	7,983	6.9%	54.5%	2.3%
20 to 24	2,749	5.3%	3,571	4.6%	6,470	5.9%	8,053	6.9%	29.9%	24.5%
25 to 34	7,208	13.9%	8,880	11.4%	11,224	10.2%	12,495	10.7%	23.2%	11.3%
35 to 44	7,867	15.2%	12,545	16.1%	14,210	12.9%	12,438	10.7%	59.5%	-12.5%
45 to 54	5,686	11.0%	11,647	14.9%	17,101	15.5%	16,748	14.4%	104.8%	-2.1%
55 to 64	5,364	10.3%	8,012	10.3%	15,137	13.8%	16,798	14.4%	49.4%	11.0%
65 to 74	4,947	9.5%	6,206	8.0%	9,319	8.5%	11,715	10.1%	25.5%	25.7%
75 +	3,435	6.6%	5,362	6.9%	7,363	6.7%	8,607	7.4%	56.1%	16.9%

Population by Race/Ethnicity

Race and Ethnicity Percent Composition



In 2011A, the predominant race/ethnicity category in this study area is **White**. The race & ethnicity category least represented in this geography is **American Indian, Alaska Native**.

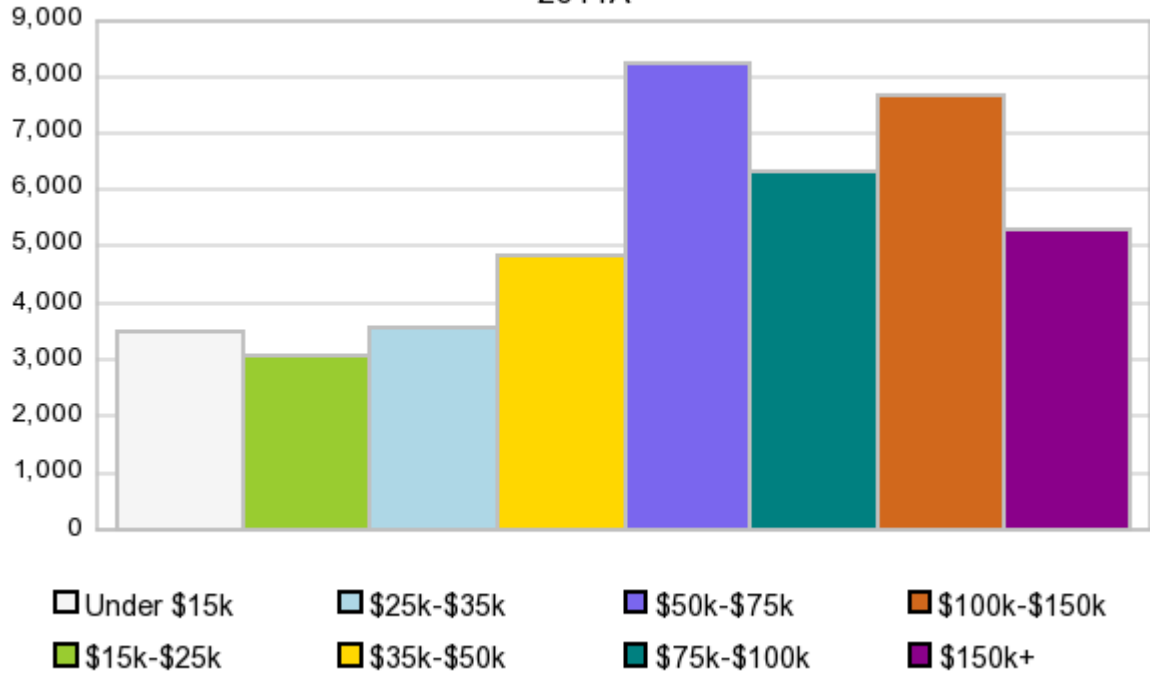
A: White
 B: Asian Pac Islr
 C: Black
 D: Hispanic
 E: Amer Indian or Alaska Native
 F: Other or Multi Race

Race & Ethnicity	2000		2010		2011A		2016		Percent Change	
	Census	%	Census	%	Estimate	%	Projection	%	2000 to 2010	2011 to 2016
White	69,501	89.1%	97,044	89.5%	98,429	89.4%	104,002	89.3%	39.6%	5.7%
Black	741	1.0%	1,727	1.6%	1,767	1.6%	1,925	1.7%	133.1%	8.9%
American Indian or Alaska Native	414	0.5%	645	0.6%	656	0.6%	696	0.6%	55.8%	6.1%
Asian/Hawaiian/PI	383	0.5%	900	0.8%	914	0.8%	971	0.8%	135.0%	6.2%
Some Other Race	5,449	7.0%	5,808	5.4%	6,230	5.7%	6,641	5.7%	6.6%	6.6%
Two or More Races	1,533	2.0%	2,348	2.2%	2,062	1.9%	2,197	1.9%	53.2%	6.5%
Hispanic Ethnicity	17,609	22.6%	26,989	24.9%	27,476	25.0%	29,435	25.3%	53.3%	7.1%
Not Hispanic or Latino	60,412	77.4%	81,483	75.1%	82,585	75.0%	87,000	74.7%	34.9%	5.3%

Households by Income

Households by Income Group 2011A

In 2011A the predominant household income category in this study area is **\$50K - \$75K**, and the income group that is least represented in this geography is **\$15K - \$25K**.



HH Income Categories*

HH Income Categories*	1990 Census		2000 Census		2011A Estimate		2016 Projection		Percent Change	
		%		%		%		%	1990 to 2000	2011 to 2016
\$0 - \$15,000	4,727	24.5%	3,493	12.0%	3,509	8.3%	3,332	7.1%	-26.1%	-5.0%
\$15,000 - \$24,999	3,531	18.3%	3,290	11.3%	3,070	7.2%	2,847	6.1%	-6.8%	-7.3%
\$25,000 - \$34,999	3,272	16.9%	3,826	13.2%	3,570	8.4%	3,273	7.0%	16.9%	-8.3%
\$35,000 - \$49,999	3,473	18.0%	5,235	18.0%	4,842	11.4%	4,432	9.4%	50.7%	-8.5%
\$50,000 - \$74,999	2,798	14.5%	6,296	21.7%	8,257	19.4%	8,676	18.5%	125.0%	5.1%
\$75,000 - \$99,999	881	4.6%	3,344	11.5%	6,307	14.8%	7,564	16.1%	279.6%	19.9%
\$100,000 - \$149,999	447	2.3%	2,316	8.0%	7,645	18.0%	10,011	21.3%	418.1%	30.9%
\$150,000 +	178	0.9%	1,266	4.4%	5,290	12.5%	6,877	14.6%	611.2%	30.0%
Average Hhld Income	\$35,605		\$58,007		\$87,979		\$101,413		62.9%	15.3%
Median Hhld Income	\$29,486		\$46,244		\$68,924		\$77,367		56.8%	12.3%
Per Capita Income	\$13,396		\$21,610		\$34,446		\$41,398		61.3%	20.2%

*This Census 2010 data has not yet been released

Current year data is for the year **2011**, 5 year projected data is for the year **2016**. More About Our Data.
Demographic data ' 2011 by Experian/Applied Geographic Solutions.

Business List data ' 2011 by D&B^{fi}. All rights reserved. All D&B information is powered by DUNSRightTM, D&B's Quality Process.

' 2011. DDR is brought to you by Alteryx, Inc.

Alteryx, DemographicsNow.com and the Alteryx and DemographicsNow.com logos are trademarks of Alteryx, Inc. All rights reserved.

Privacy Statement | License Agreement