



Date: 05/03/12

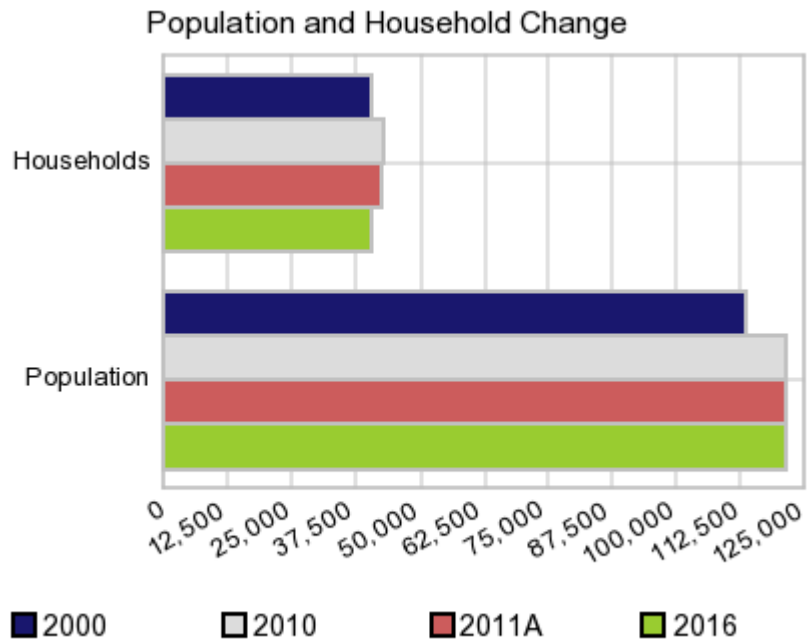
Current Geography Selection: (1 Selected) Counties: Potter County

Executive Summary Report with Charts

Population Demographics:

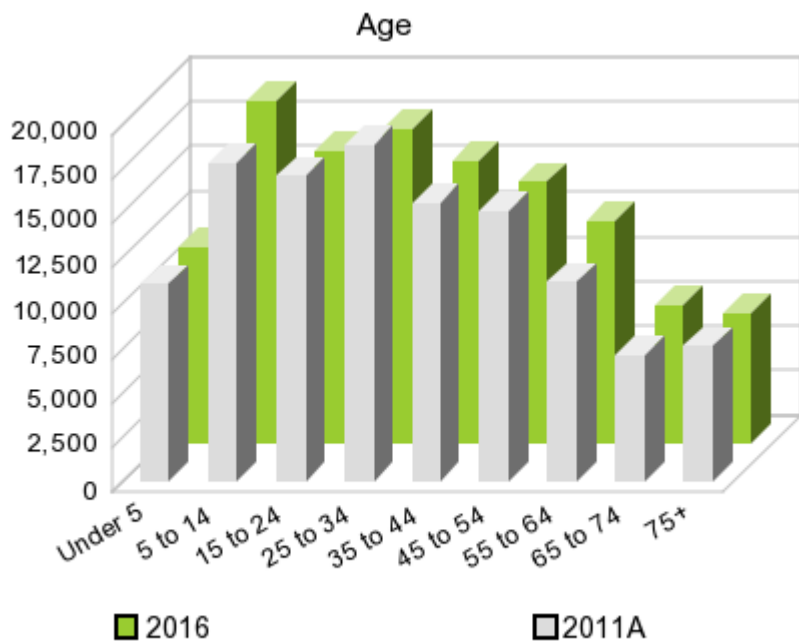
The number of households in the study area in 2000 was **40,760** and changed to **42,933** in 2010, representing a change of **5.3%**. The household count in 2011A was **42,449** and the household projection for 2016 is **40,577**, a change of **-4.4%**.

The population in the study area in 2000 was **113,546** and in 2010 it was **121,073**, roughly a **6.6%** change. The population in 2011A was **121,198** and the projection for 2016 is **121,688** representing a change of **0.4%**.



	2000 Census	2010 Census	2011A Estimate	2016 Projection	Percent Change	
					2000 to 2010	2011 to 2016
Total Population	113,546	121,073	121,198	121,688	6.6%	0.4%
Total Households	40,760	42,933	42,449	40,577	15.0%	-4.4%

Population by Age



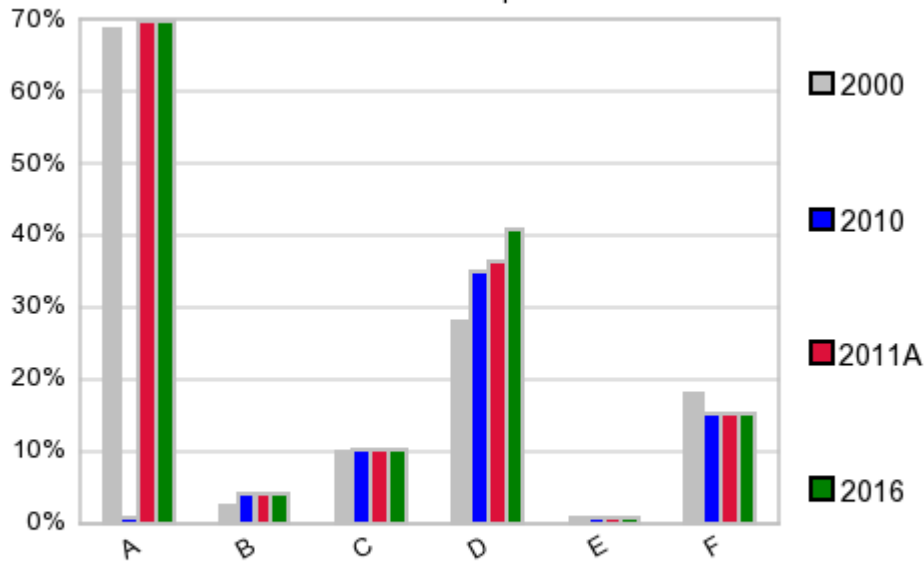
In 1990, the median age of the total population in the study area was **31**, and in 2000, it was **32**. The median age in 2011A is **33** and it is predicted to change in five years to **33** years. In 2011A, females represented **49.3%** of the population with a median age of **34** and males represented **50.7%** of the population with a median age of **32** years. In 2011A, the most prominent age group in this geography is **Age 25 to 34** years. The age group least represented in this geography is **65 to 74** years.

Age Groups*

	1990		2000		2011A		2016		Percent Change	
	Census	%	Census	%	Estimate	%	Projection	%	1990 to 2000	2011 to 2016
0 to 4	8,742	8.9%	9,393	8.3%	11,020	9.1%	10,915	9.0%	7.4%	-1.0%
5 to 14	15,414	15.7%	17,504	15.4%	17,883	14.8%	19,156	15.7%	13.6%	7.1%
15 to 19	6,989	7.1%	8,735	7.7%	8,468	7.0%	8,289	6.8%	25.0%	-2.1%
20 to 24	7,144	7.3%	8,738	7.7%	8,577	7.1%	8,002	6.6%	22.3%	-6.7%
25 to 34	16,840	17.2%	16,814	14.8%	18,835	15.5%	17,521	14.4%	-0.2%	-7.0%
35 to 44	12,876	13.2%	17,369	15.3%	15,564	12.8%	15,792	13.0%	34.9%	1.5%
45 to 54	8,640	8.8%	13,192	11.6%	15,091	12.5%	14,575	12.0%	52.7%	-3.4%
55 to 64	8,420	8.6%	8,499	7.5%	11,110	9.2%	12,464	10.2%	0.9%	12.2%
65 to 74	7,000	7.2%	6,746	5.9%	7,007	5.8%	7,697	6.3%	-3.6%	9.8%
75 +	5,808	5.9%	6,556	5.8%	7,618	6.3%	7,254	6.0%	12.9%	-4.8%

Population by Race/Ethnicity

Race and Ethnicity Percent Composition



In 2011A, the predominant race/ethnicity category in this study area is **White**. The race & ethnicity category least represented in this geography is **American Indian, Alaska Native**.

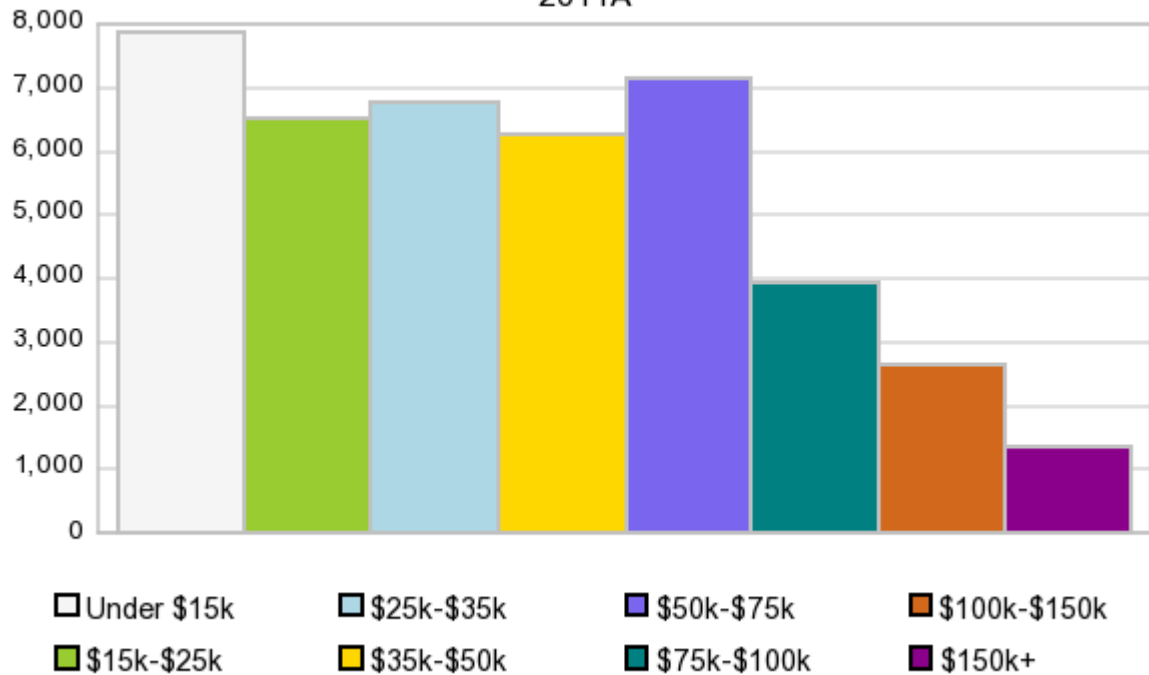
A: White
 B: Asian Pac Islr
 C: Black
 D: Hispanic
 E: Amer Indian or Alaska Native
 F: Other or Multi Race

Race & Ethnicity	2000		2010		2011A		2016		Percent Change	
	Census	%	Census	%	Estimate	%	Projection	%	2000 to 2010	2011 to 2016
White	77,890	68.6%	84,523	69.8%	84,561	69.8%	84,726	69.6%	8.5%	0.2%
Black	11,308	10.0%	12,365	10.2%	12,418	10.3%	12,612	10.4%	9.3%	1.6%
American Indian or Alaska Native	993	0.9%	1,004	0.8%	1,006	0.8%	1,012	0.8%	1.1%	0.6%
Asian/Hawaiian/PI	2,875	2.5%	4,885	4.0%	4,877	4.0%	4,852	4.0%	69.9%	-0.5%
Some Other Race	17,528	15.4%	14,611	12.1%	15,173	12.5%	15,288	12.6%	-16.6%	0.8%
Two or More Races	2,952	2.6%	3,685	3.0%	3,164	2.6%	3,194	2.6%	24.8%	0.9%
Hispanic Ethnicity	31,921	28.1%	42,692	35.3%	44,082	36.4%	49,636	40.8%	33.7%	12.6%
Not Hispanic or Latino	81,625	71.9%	78,381	64.7%	77,114	63.6%	72,053	59.2%	-4.0%	-6.6%

Households by Income

Households by Income Group 2011A

In 2011A the predominant household income category in this study area is **\$0 - \$15K**, and the income group that is least represented in this geography is **\$150K +**.



HH Income Categories*

	1990 Census		2000 Census		2011A Estimate		2016 Projection		Percent Change	
		%		%		%		%	1990 to 2000	2011 to 2016
\$0 - \$15,000	13,853	37.1%	9,732	23.9%	7,848	18.5%	6,797	16.8%	-29.7%	-13.4%
\$15,000 - \$24,999	8,251	22.1%	7,567	18.6%	6,505	15.3%	5,819	14.3%	-8.3%	-10.5%
\$25,000 - \$34,999	6,311	16.9%	6,458	15.8%	6,757	15.9%	6,497	16.0%	2.3%	-3.8%
\$35,000 - \$49,999	4,962	13.3%	6,999	17.2%	6,269	14.8%	5,641	13.9%	41.1%	-10.0%
\$50,000 - \$74,999	2,748	7.4%	5,744	14.1%	7,144	16.8%	7,185	17.7%	109.0%	0.6%
\$75,000 - \$99,999	616	1.7%	2,188	5.4%	3,951	9.3%	4,333	10.7%	255.2%	9.7%
\$100,000 - \$149,999	359	1.0%	1,234	3.0%	2,626	6.2%	2,912	7.2%	243.7%	10.9%
\$150,000 +	286	0.8%	838	2.1%	1,352	3.2%	1,396	3.4%	193.0%	3.3%
Average Hhld Income	\$26,323		\$40,458		\$50,365		\$55,590		53.7%	10.4%
Median Hhld Income	\$20,542		\$29,524		\$35,220		\$37,664		43.7%	6.9%
Per Capita Income	\$10,191		\$14,523		\$19,869		\$21,257		42.5%	7.0%

*This Census 2010 data has not yet been released

Current year data is for the year **2011**, 5 year projected data is for the year **2016**. More About Our Data.
Demographic data © 2011 by Experian/Applied Geographic Solutions.

Business List data © 2011 by D&B®. All rights reserved. All D&B information is powered by DUNSRight™, D&B's Quality Process.

Alteryx, DemographicsNow.com and the Alteryx and DemographicsNow.com logos are trademarks of Alteryx, Inc.
All rights reserved.

Privacy Statement | License Agreement