



Date: 05/03/12

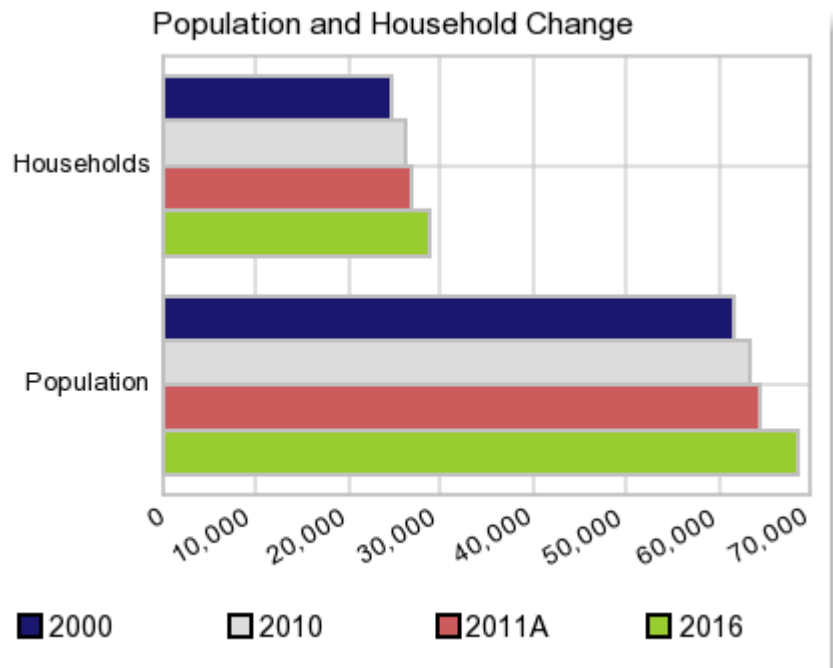
Current Geography Selection: (1 Selected) Counties: Pittsylvania County

Executive Summary Report with Charts

Population Demographics:

The number of households in the study area in 2000 was **24,684** and changed to **26,183** in 2010, representing a change of **6.1%**. The household count in 2011A was **26,717** and the household projection for 2016 is **28,845**, a change of **8.0%**.

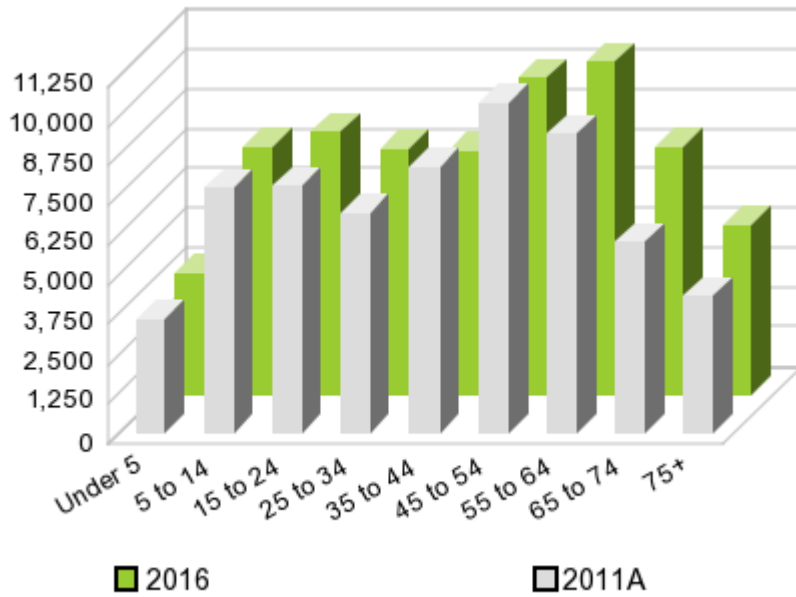
The population in the study area in 2000 was **61,745** and in 2010 it was **63,506**, roughly a **2.9%** change. The population in 2011A was **64,570** and the projection for 2016 is **68,770** representing a change of **6.5%**.



	2000 Census	2010 Census	2011A Estimate	2016 Projection	Percent Change	
					2000 to 2010	2011 to 2016
Total Population	61,745	63,506	64,570	68,770	2.9%	6.5%
Total Households	24,684	26,183	26,717	28,845	27.0%	8.0%

Population by Age

Age



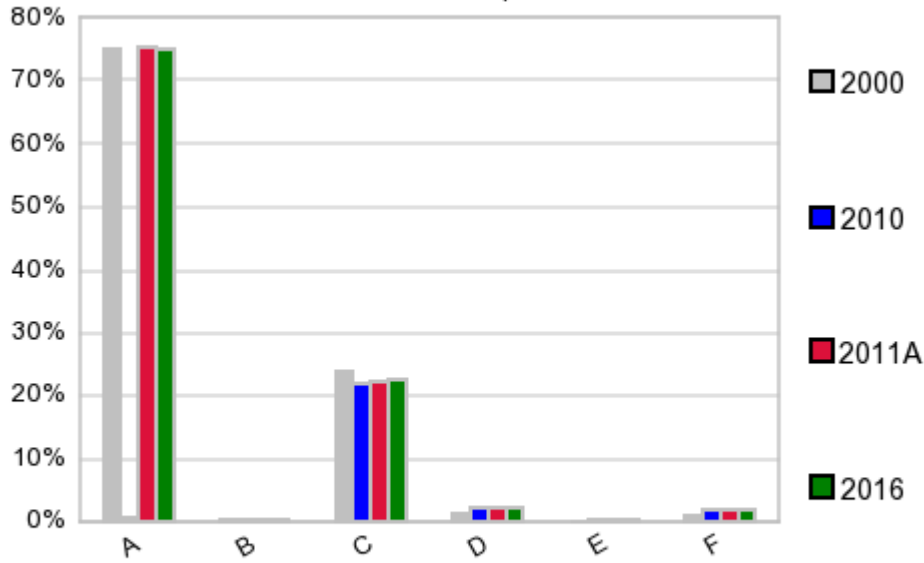
In 1990, the median age of the total population in the study area was **36**, and in 2000, it was **40**. The median age in 2011A is **43** and it is predicted to change in five years to **44** years. In 2011A, females represented **50.7%** of the population with a median age of **44** and males represented **49.4%** of the population with a median age of **41** years. In 2011A, the most prominent age group in this geography is **Age 45 to 54** years. The age group least represented in this geography is **0 to 4** years.

Age Groups*

	1990 Census		2000 Census		2011A Estimate		2016 Projection		Percent Change	
		%		%		%		%	1990 to 2000	2011 to 2016
0 to 4	3,423	6.2%	3,514	5.7%	3,593	5.6%	3,822	5.6%	2.7%	6.4%
5 to 14	7,676	13.8%	8,043	13.0%	7,701	11.9%	7,766	11.3%	4.8%	0.8%
15 to 19	3,964	7.1%	4,143	6.7%	3,965	6.1%	4,089	6.0%	4.5%	3.1%
20 to 24	3,426	6.2%	2,977	4.8%	3,794	5.9%	4,163	6.1%	-13.1%	9.7%
25 to 34	8,899	16.0%	7,443	12.1%	6,935	10.7%	7,707	11.2%	-16.4%	11.1%
35 to 44	8,666	15.6%	10,322	16.7%	8,418	13.0%	7,682	11.2%	19.1%	-8.7%
45 to 54	6,618	11.9%	9,492	15.4%	10,412	16.1%	9,958	14.5%	43.4%	-4.4%
55 to 64	5,541	10.0%	6,952	11.3%	9,432	14.6%	10,430	15.2%	25.5%	10.6%
65 to 74	4,568	8.2%	5,000	8.1%	6,000	9.3%	7,784	11.3%	9.5%	29.7%
75 +	2,877	5.2%	3,859	6.3%	4,309	6.7%	5,357	7.8%	34.1%	24.3%

Population by Race/Ethnicity

Race and Ethnicity Percent Composition



In 2011A, the predominant race/ethnicity category in this study area is **White**. The race & ethnicity category least represented in this geography is **American Indian, Alaska Native**.

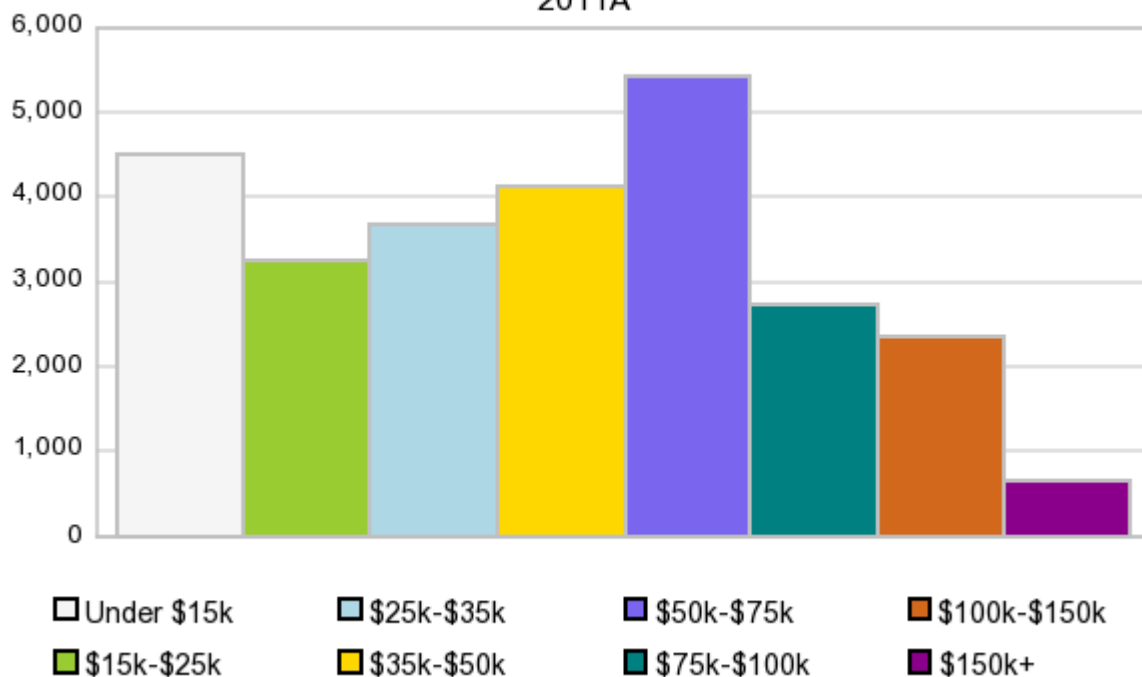
A: White
 B: Asian Pac Islr
 C: Black
 D: Hispanic
 E: Amer Indian or Alaska Native
 F: Other or Multi Race

Race & Ethnicity	2000		2010		2011A		2016		Percent Change	
	Census	%	Census	%	Estimate	%	Projection	%	2000 to 2010	2011 to 2016
White	46,311	75.0%	47,918	75.5%	48,652	75.4%	51,545	75.0%	3.5%	5.9%
Black	14,606	23.7%	14,018	22.1%	14,320	22.2%	15,504	22.5%	-4.0%	8.3%
American Indian or Alaska Native	88	0.1%	151	0.2%	153	0.2%	162	0.2%	71.6%	5.9%
Asian/Hawaiian/PI	120	0.2%	199	0.3%	208	0.3%	244	0.4%	65.8%	17.3%
Some Other Race	230	0.4%	525	0.8%	470	0.7%	498	0.7%	128.3%	6.0%
Two or More Races	390	0.6%	695	1.1%	769	1.2%	817	1.2%	78.2%	6.2%
Hispanic Ethnicity	759	1.2%	1,332	2.1%	1,377	2.1%	1,554	2.3%	75.5%	12.9%
Not Hispanic or Latino	60,986	98.8%	62,174	97.9%	63,192	97.9%	67,216	97.7%	1.9%	6.4%

Households by Income

Households by Income Group 2011A

In 2011A the predominant household income category in this study area is **\$50K - \$75K**, and the income group that is least represented in this geography is **\$150K +**.



HH Income Categories*

	1990 Census		2000 Census		2011A Estimate		2016 Projection		Percent Change	
		%		%		%		%	1990 to 2000	2011 to 2016
\$0 - \$15,000	5,870	28.5%	4,742	19.2%	4,515	16.9%	4,597	15.9%	-19.2%	1.8%
\$15,000 - \$24,999	4,148	20.1%	3,939	16.0%	3,252	12.2%	3,122	10.8%	-5.0%	-4.0%
\$25,000 - \$34,999	3,815	18.5%	3,601	14.6%	3,655	13.7%	3,797	13.2%	-5.6%	3.9%
\$35,000 - \$49,999	3,677	17.8%	4,987	20.2%	4,117	15.4%	3,928	13.6%	35.6%	-4.6%
\$50,000 - \$74,999	2,376	11.5%	4,681	19.0%	5,431	20.3%	5,921	20.5%	97.0%	9.0%
\$75,000 - \$99,999	439	2.1%	1,740	7.1%	2,714	10.2%	3,334	11.6%	296.4%	22.8%
\$100,000 - \$149,999	165	0.8%	696	2.8%	2,360	8.8%	3,287	11.4%	321.8%	39.3%
\$150,000 +	113	0.6%	298	1.2%	672	2.5%	856	3.0%	163.7%	27.4%
Average Hhld Income	\$29,983		\$42,196		\$49,513		\$54,301		40.7%	9.7%
Median Hhld Income	\$25,591		\$35,175		\$41,343		\$45,245		37.5%	9.4%
Per Capita Income	\$11,126		\$16,869		\$20,808		\$23,143		51.6%	11.2%

*This Census 2010 data has not yet been released

Current year data is for the year **2011**, 5 year projected data is for the year **2016**. More About Our Data.
Demographic data ' 2011 by Experian/Applied Geographic Solutions.

Business List data ' 2011 by D&B^{fi}. All rights reserved. All D&B information is powered by DUNSRight™, D&B's Quality Process.

' 2011. DDR is brought to you by Alteryx, Inc.

Alteryx, DemographicsNow.com and the Alteryx and DemographicsNow.com logos are trademarks of Alteryx, Inc. All rights reserved.

Privacy Statement | License Agreement