



Date: 04/30/12

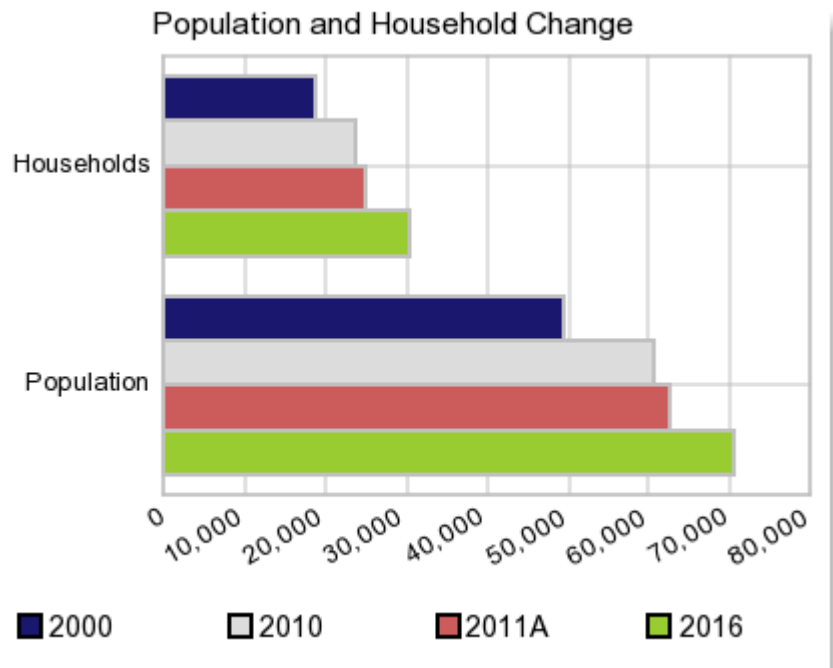
Current Geography Selection: (1 Selected) Counties: Mason County

## Executive Summary Report with Charts

### Population Demographics:

The number of households in the study area in 2000 was **18,912** and changed to **23,832** in 2010, representing a change of **26.0%**. The household count in 2011A was **25,113** and the household projection for 2016 is **30,248**, a change of **20.4%**.

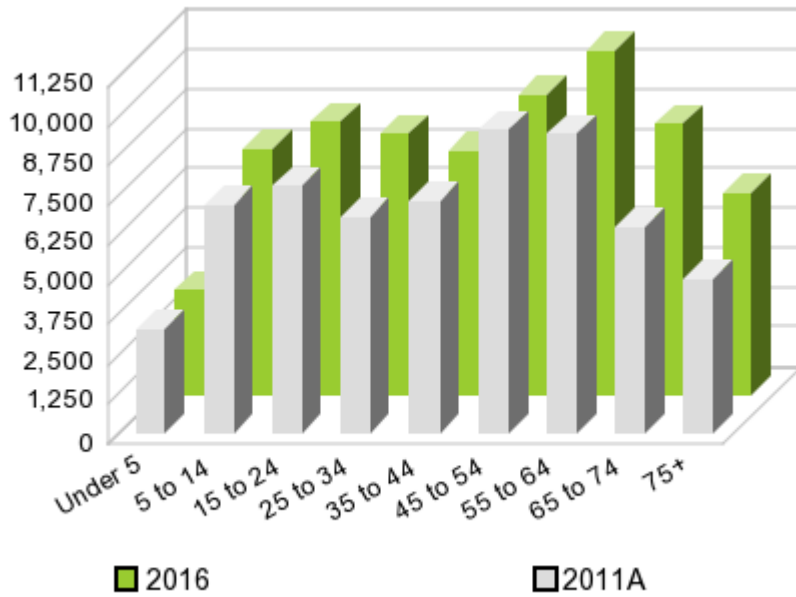
The population in the study area in 2000 was **49,405** and in 2010 it was **60,699**, roughly a **22.9%** change. The population in 2011A was **62,680** and the projection for 2016 is **70,602** representing a change of **12.6%**.



	2000 Census	2010 Census	2011A Estimate	2016 Projection	Percent Change	
					2000 to 2010	2011 to 2016
Total Population	49,405	60,699	62,680	70,602	22.9%	12.6%
Total Households	18,912	23,832	25,113	30,248	63.6%	20.4%

### Population by Age

### Age



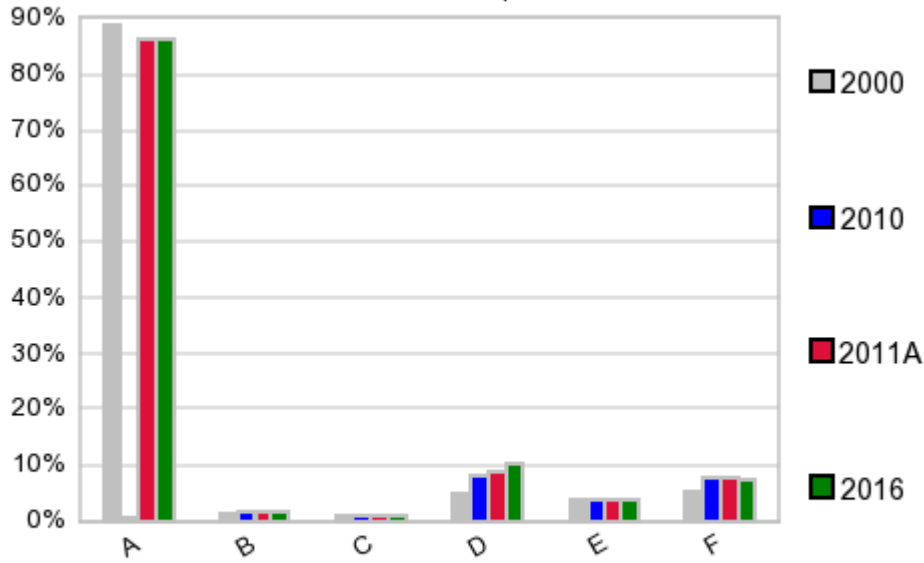
In 1990, the median age of the total population in the study area was **37**, and in 2000, it was **40**. The median age in 2011A is **44** and it is predicted to change in five years to **45** years. In 2011A, females represented **48.6%** of the population with a median age of **46** and males represented **51.4%** of the population with a median age of **42** years. In 2011A, the most prominent age group in this geography is **Age 45 to 54** years. The age group least represented in this geography is **0 to 4** years.

#### Age Groups\*

Age Groups*	1990 Census		2000 Census		2011A Estimate		2016 Projection		Percent Change	
	Census	%	Census	%	Estimate	%	Projection	%	1990 to 2000	2011 to 2016
0 to 4	2,463	6.4%	2,663	5.4%	3,282	5.2%	3,292	4.7%	8.1%	0.3%
5 to 14	5,673	14.8%	6,721	13.6%	7,170	11.4%	7,729	10.9%	18.5%	7.8%
15 to 19	2,376	6.2%	3,524	7.1%	3,953	6.3%	4,074	5.8%	48.3%	3.1%
20 to 24	1,972	5.1%	2,507	5.1%	3,856	6.2%	4,471	6.3%	27.1%	16.0%
25 to 34	5,452	14.2%	5,476	11.1%	6,800	10.8%	8,197	11.6%	0.4%	20.5%
35 to 44	5,859	15.3%	7,604	15.4%	7,288	11.6%	7,678	10.9%	29.8%	5.4%
45 to 54	4,061	10.6%	7,222	14.6%	9,557	15.2%	9,455	13.4%	77.8%	-1.1%
55 to 64	4,183	10.9%	5,539	11.2%	9,430	15.0%	10,812	15.3%	32.4%	14.7%
65 to 74	4,151	10.8%	4,704	9.5%	6,490	10.4%	8,529	12.1%	13.3%	31.4%
75 +	2,149	5.6%	3,445	7.0%	4,850	7.7%	6,353	9.0%	60.3%	31.0%

#### Population by Race/Ethnicity

### Race and Ethnicity Percent Composition



In 2011A, the predominant race/ethnicity category in this study area is **White**. The race & ethnicity category least represented in this geography is **Black**.

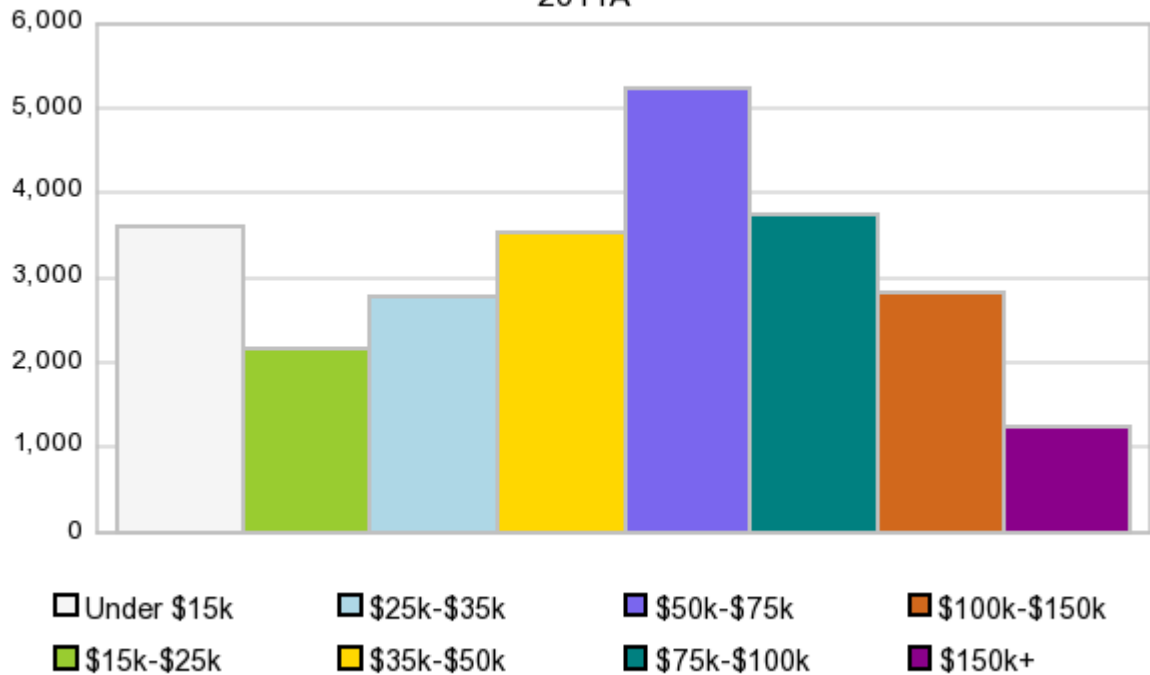
A: White  
 B: Asian Pac Islr  
 C: Black  
 D: Hispanic  
 E: Amer Indian or Alaska Native  
 F: Other or Multi Race

Race & Ethnicity	2000		2010		2011A		2016		Percent Change	
	Census	%	Census	%	Estimate	%	Projection	%	2000 to 2010	2011 to 2016
White	43,705	88.5%	52,281	86.1%	53,994	86.1%	60,844	86.2%	19.6%	12.7%
Black	587	1.2%	659	1.1%	681	1.1%	769	1.1%	12.3%	12.9%
American Indian or Alaska Native	1,840	3.7%	2,239	3.7%	2,313	3.7%	2,610	3.7%	21.7%	12.8%
Asian/Hawaiian/PI	740	1.5%	958	1.6%	989	1.6%	1,113	1.6%	29.5%	12.5%
Some Other Race	1,036	2.1%	2,049	3.4%	1,923	3.1%	2,134	3.0%	97.8%	11.0%
Two or More Races	1,497	3.0%	2,513	4.1%	2,780	4.4%	3,132	4.4%	67.9%	12.7%
Hispanic Ethnicity	2,361	4.8%	4,844	8.0%	5,368	8.6%	7,463	10.6%	105.2%	39.0%
Not Hispanic or Latino	47,044	95.2%	55,855	92.0%	57,312	91.4%	63,139	89.4%	18.7%	10.2%

### Households by Income

## Households by Income Group 2011A

In 2011A the predominant household income category in this study area is **\$50K - \$75K**, and the income group that is least represented in this geography is **\$150K +**.



### HH Income Categories\*

	1990 Census		2000 Census		2011A Estimate		2016 Projection		Percent Change	
		%		%		%		%	1990 to 2000	2011 to 2016
\$0 - \$15,000	3,870	26.6%	2,950	15.6%	3,586	14.3%	4,187	13.8%	-23.8%	16.8%
\$15,000 - \$24,999	2,969	20.4%	2,680	14.2%	2,175	8.7%	2,139	7.1%	-9.7%	-1.7%
\$25,000 - \$34,999	2,730	18.7%	2,649	14.0%	2,771	11.0%	2,979	9.8%	-3.0%	7.5%
\$35,000 - \$49,999	2,731	18.7%	3,850	20.4%	3,524	14.0%	3,548	11.7%	41.0%	0.7%
\$50,000 - \$74,999	1,710	11.7%	4,098	21.7%	5,242	20.9%	6,153	20.3%	139.7%	17.4%
\$75,000 - \$99,999	325	2.2%	1,528	8.1%	3,767	15.0%	5,306	17.5%	370.2%	40.9%
\$100,000 - \$149,999	164	1.1%	818	4.3%	2,806	11.2%	4,149	13.7%	398.8%	47.9%
\$150,000 +	66	0.5%	339	1.8%	1,242	4.9%	1,787	5.9%	413.6%	43.9%
Average Hhld Income	\$30,848		\$45,665		\$60,670		\$68,817		48.0%	13.4%
Median Hhld Income	\$26,436		\$39,645		\$52,036		\$58,733		50.0%	12.9%
Per Capita Income	\$12,091		\$17,480		\$25,457		\$30,722		44.6%	20.7%

\*This Census 2010 data has not yet been released

Current year data is for the year **2011**, 5 year projected data is for the year **2016**. More About Our Data.  
Demographic data ' 2011 by Experian/Applied Geographic Solutions.

Business List data ' 2011 by D&B<sup>fi</sup>. All rights reserved. All D&B information is powered by DUNSRight™, D&B's Quality Process.

**' 2011. DDR is brought to you by Alteryx, Inc.**

Alteryx, DemographicsNow.com and the Alteryx and DemographicsNow.com logos are trademarks of Alteryx, Inc. All rights reserved.

Privacy Statement | License Agreement