



Date: 05/04/12

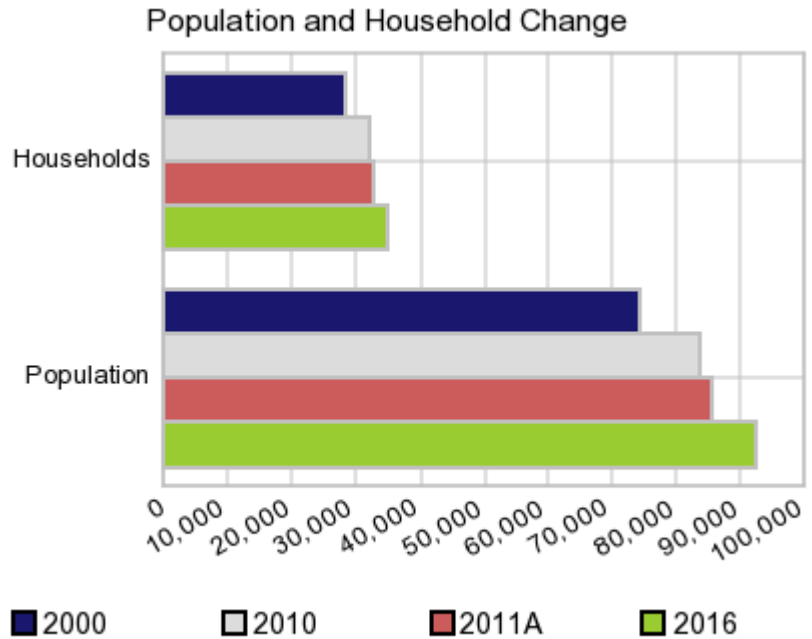
Current Geography Selection: (1 Selected) Counties: Jefferson County

## Executive Summary Report with Charts

### Population Demographics:

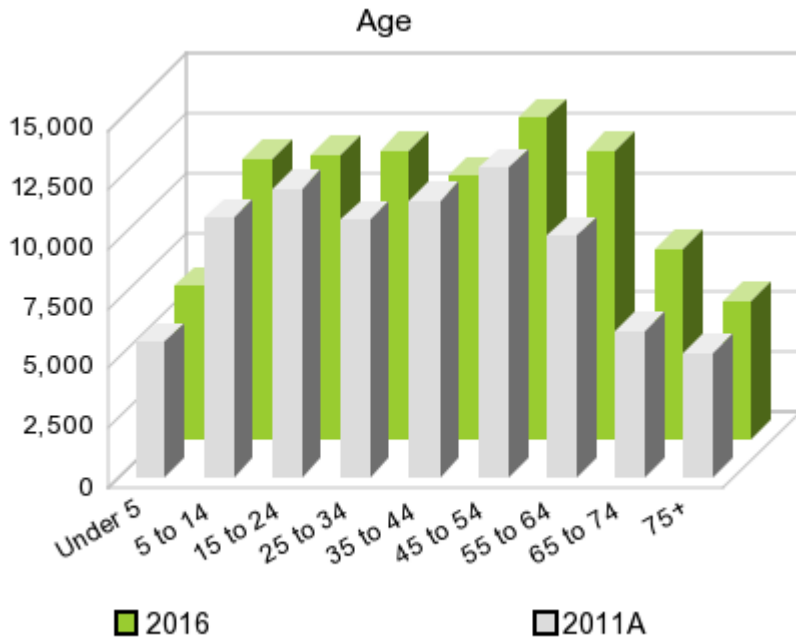
The number of households in the study area in 2000 was **28,205** and changed to **32,117** in 2010, representing a change of **13.9%**. The household count in 2011A was **32,681** and the household projection for 2016 is **34,871**, a change of **6.7%**.

The population in the study area in 2000 was **74,021** and in 2010 it was **83,686**, roughly a **13.1%** change. The population in 2011A was **85,479** and the projection for 2016 is **92,482** representing a change of **8.2%**.



	2000 Census	2010 Census	2011A Estimate	2016 Projection	Percent Change	
					2000 to 2010	2011 to 2016
Total Population	74,021	83,686	85,479	92,482	13.1%	8.2%
Total Households	28,205	32,117	32,681	34,871	33.7%	6.7%

### Population by Age



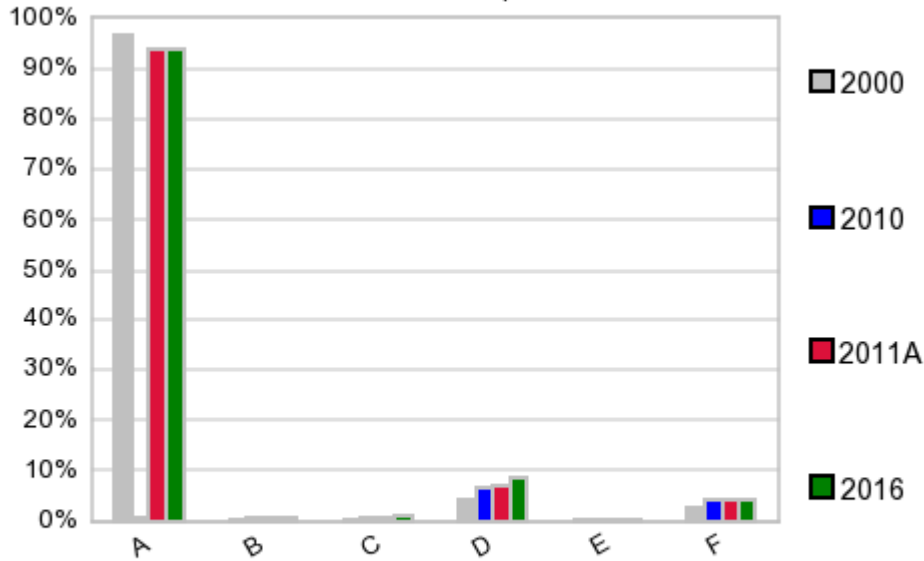
In 1990, the median age of the total population in the study area was **33**, and in 2000, it was **37**. The median age in 2011A is **38** and it is predicted to change in five years to **39** years. In 2011A, females represented **50.3%** of the population with a median age of **39** and males represented **49.7%** of the population with a median age of **37** years. In 2011A, the most prominent age group in this geography is **Age 45 to 54** years. The age group least represented in this geography is **75 +** years.

**Age Groups\***

	1990		2000		2011A		2016		Percent Change	
	Census	%	Census	%	Estimate	%	Projection	%	1990 to 2000	2011 to 2016
0 to 4	4,685	6.9%	4,695	6.3%	5,675	6.6%	6,437	7.0%	0.2%	13.4%
5 to 14	9,998	14.8%	10,575	14.3%	10,845	12.7%	11,721	12.7%	5.8%	8.1%
15 to 19	6,041	8.9%	5,414	7.3%	5,993	7.0%	5,636	6.1%	-10.4%	-6.0%
20 to 24	4,902	7.2%	4,278	5.8%	6,052	7.1%	6,263	6.8%	-12.7%	3.5%
25 to 34	10,694	15.8%	10,042	13.6%	10,744	12.6%	12,090	13.1%	-6.1%	12.5%
35 to 44	9,941	14.7%	12,457	16.8%	11,632	13.6%	11,044	11.9%	25.3%	-5.1%
45 to 54	7,122	10.5%	10,429	14.1%	12,985	15.2%	13,499	14.6%	46.4%	4.0%
55 to 64	5,575	8.2%	6,772	9.1%	10,131	11.9%	12,041	13.0%	21.5%	18.9%
65 to 74	4,850	7.2%	4,752	6.4%	6,189	7.2%	7,971	8.6%	-2.0%	28.8%
75 +	3,979	5.9%	4,607	6.2%	5,220	6.1%	5,771	6.2%	15.8%	10.6%

**Population by Race/Ethnicity**

### Race and Ethnicity Percent Composition



In 2011A, the predominant race/ethnicity category in this study area is **White**. The race & ethnicity category least represented in this geography is **American Indian, Alaska Native**.

A: White  
 B: Asian Pac Islr  
 C: Black  
 D: Hispanic  
 E: Amer Indian or Alaska Native  
 F: Other or Multi Race

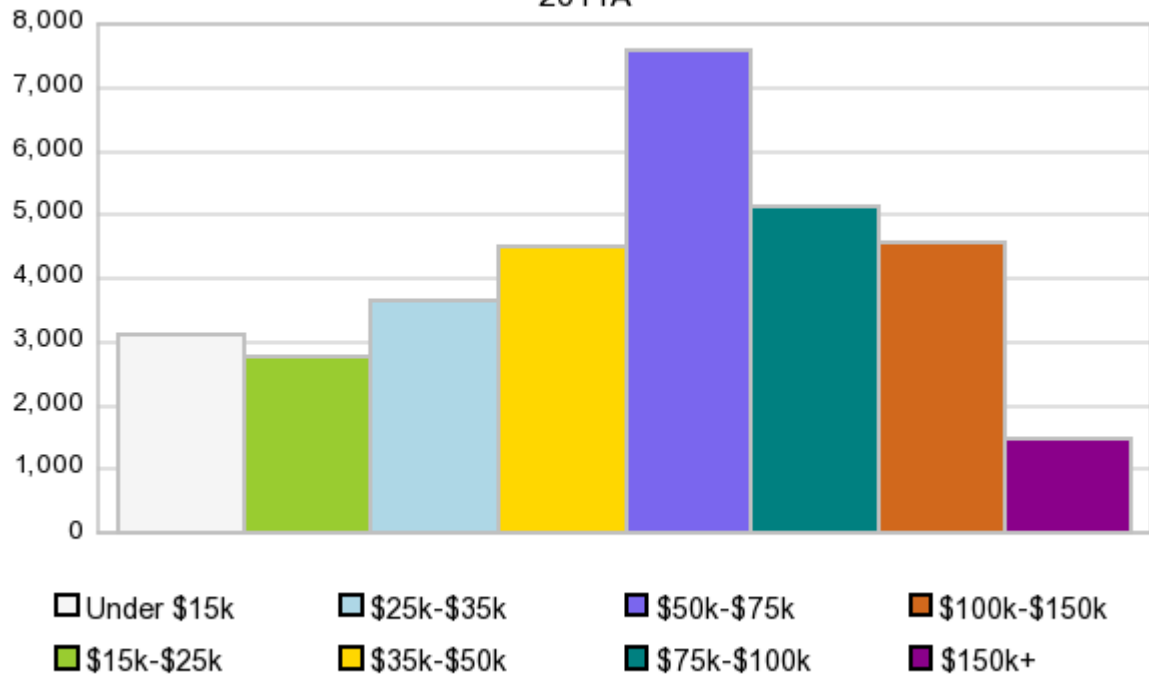
### Race & Ethnicity

	2000		2010		2011A		2016		Percent Change	
	Census	%	Census	%	Estimate	%	Projection	%	2000 to 2010	2011 to 2016
White	71,309	96.3%	78,632	94.0%	80,260	93.9%	86,620	93.7%	10.3%	7.9%
Black	210	0.3%	681	0.8%	725	0.9%	907	1.0%	224.3%	25.1%
American Indian or Alaska Native	249	0.3%	257	0.3%	268	0.3%	307	0.3%	3.2%	14.6%
Asian/Hawaiian/PI	347	0.5%	578	0.7%	597	0.7%	678	0.7%	66.6%	13.6%
Some Other Race	1,220	1.7%	2,479	3.0%	2,328	2.7%	2,533	2.7%	103.2%	8.8%
Two or More Races	686	0.9%	1,059	1.3%	1,301	1.5%	1,437	1.6%	54.4%	10.5%
Hispanic Ethnicity	3,031	4.1%	5,555	6.6%	6,037	7.1%	7,932	8.6%	83.3%	31.4%
Not Hispanic or Latino	70,990	95.9%	78,131	93.4%	79,442	92.9%	84,549	91.4%	10.1%	6.4%

### Households by Income

### Households by Income Group 2011A

In 2011A the predominant household income category in this study area is **\$50K - \$75K**, and the income group that is least represented in this geography is **\$150K +**.



#### HH Income Categories\*

	1990 Census		2000 Census		2011A Estimate		2016 Projection		Percent Change	
		%		%		%		%	1990 to 2000	2011 to 2016
\$0 - \$15,000	4,782	19.9%	2,495	8.8%	3,110	9.5%	3,364	9.6%	-47.8%	8.2%
\$15,000 - \$24,999	4,486	18.7%	3,519	12.5%	2,743	8.4%	2,471	7.1%	-21.6%	-9.9%
\$25,000 - \$34,999	4,580	19.1%	3,762	13.3%	3,641	11.1%	3,566	10.2%	-17.9%	-2.1%
\$35,000 - \$49,999	5,656	23.5%	5,396	19.1%	4,492	13.7%	4,104	11.8%	-4.6%	-8.6%
\$50,000 - \$74,999	3,212	13.4%	7,381	26.2%	7,563	23.1%	7,608	21.8%	129.8%	0.6%
\$75,000 - \$99,999	701	2.9%	3,186	11.3%	5,118	15.7%	6,033	17.3%	354.5%	17.9%
\$100,000 - \$149,999	383	1.6%	1,729	6.1%	4,547	13.9%	5,932	17.0%	351.4%	30.5%
\$150,000 +	198	0.8%	737	2.6%	1,468	4.5%	1,794	5.1%	272.2%	22.2%
Average Hhld Income	\$35,214		\$54,862		\$67,573		\$74,403		55.8%	10.1%
Median Hhld Income	\$30,764		\$47,036		\$57,313		\$62,803		52.9%	9.6%
Per Capita Income	\$12,694		\$20,905		\$26,529		\$28,802		64.7%	8.6%

\*This Census 2010 data has not yet been released

Current year data is for the year **2011**, 5 year projected data is for the year **2016**. More About Our Data.  
Demographic data © 2011 by Experian/Applied Geographic Solutions.

Business List data © 2011 by D&B®. All rights reserved. All D&B information is powered by DUNSRight™, D&B's Quality Process.

Alteryx, DemographicsNow.com and the Alteryx and DemographicsNow.com logos are trademarks of Alteryx, Inc.  
All rights reserved.

Privacy Statement | License Agreement